

Children's Mercy Kansas City

SHARE @ Children's Mercy

Care Process Models

Quality Improvement and Clinical Safety

10-2020

Acute Gastroenteritis: Emergency Department/Urgent Care Centers

Children's Mercy Kansas City

Follow this and additional works at: https://scholarlyexchange.childrensmc.org/care_models



Part of the [Pediatrics Commons](#)

These guidelines do not establish a standard of care to be followed in every case. It is recognized that each case is different and those individuals involved in providing health care are expected to use their judgment in determining what is in the best interests of the patient based on the circumstances existing at the time. It is impossible to anticipate all possible situations that may exist and to prepare guidelines for each. Accordingly, these guidelines should guide care with the understanding that departures from them may be required at times.

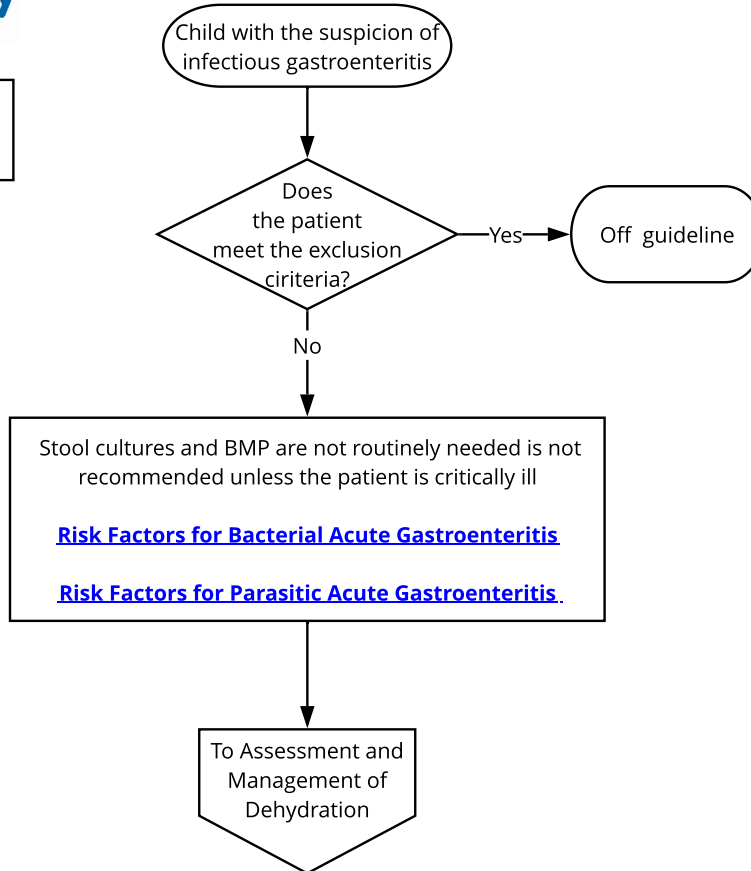
Recommended Citation

Children's Mercy Kansas City, "Acute Gastroenteritis: Emergency Department/Urgent Care Centers" (2020). *Care Process Models*. 3.

https://scholarlyexchange.childrensmc.org/care_models/3

This Care Process Model is brought to you for free and open access by the Quality Improvement and Clinical Safety at SHARE @ Children's Mercy. It has been accepted for inclusion in Care Process Models by an authorized administrator of SHARE @ Children's Mercy. For more information, please contact hlsteel@cmh.edu.

Algorithm finalized/revised: 10/29/2020
Owner: G. Abraham, MD



Inclusion criteria:

- Patient \geq 3 months of age
- Diarrhea of recent onset $<$ 7 days
- With or without vomiting, fever, nausea, or abdominal pain

Exclusion Criteria

- Patient $<$ 3 months of age
- immune compromise
- Toxic appearance (consider sepsis)
- Vomiting with no diarrhea for $>$ 24 hours
- Co-morbid conditions (such as medically complex children, renal failure, cardiac disease, IBD, liver disease)
- Bilious emesis (consider bowel obstruction)
- Acute surgical abdomen
- Head injury
- Chronic disease
- ICU admission