

Children's Mercy Kansas City

SHARE @ Children's Mercy

Children's Mercy Annual Reports

Who we are

2009

Children's Mercy Hospital Annual Report 2008

Children's Mercy Hospital

Let us know how access to this publication benefits you

Follow this and additional works at: <https://scholarlyexchange.childrensmercy.org/cmh-annual-reports>



Part of the [Health and Medical Administration Commons](#), and the [Pediatrics Commons](#)

Recommended Citation

Children's Mercy Hospital, "Children's Mercy Hospital Annual Report 2008" (2009). *Children's Mercy Annual Reports*. 8.

<https://scholarlyexchange.childrensmercy.org/cmh-annual-reports/8>

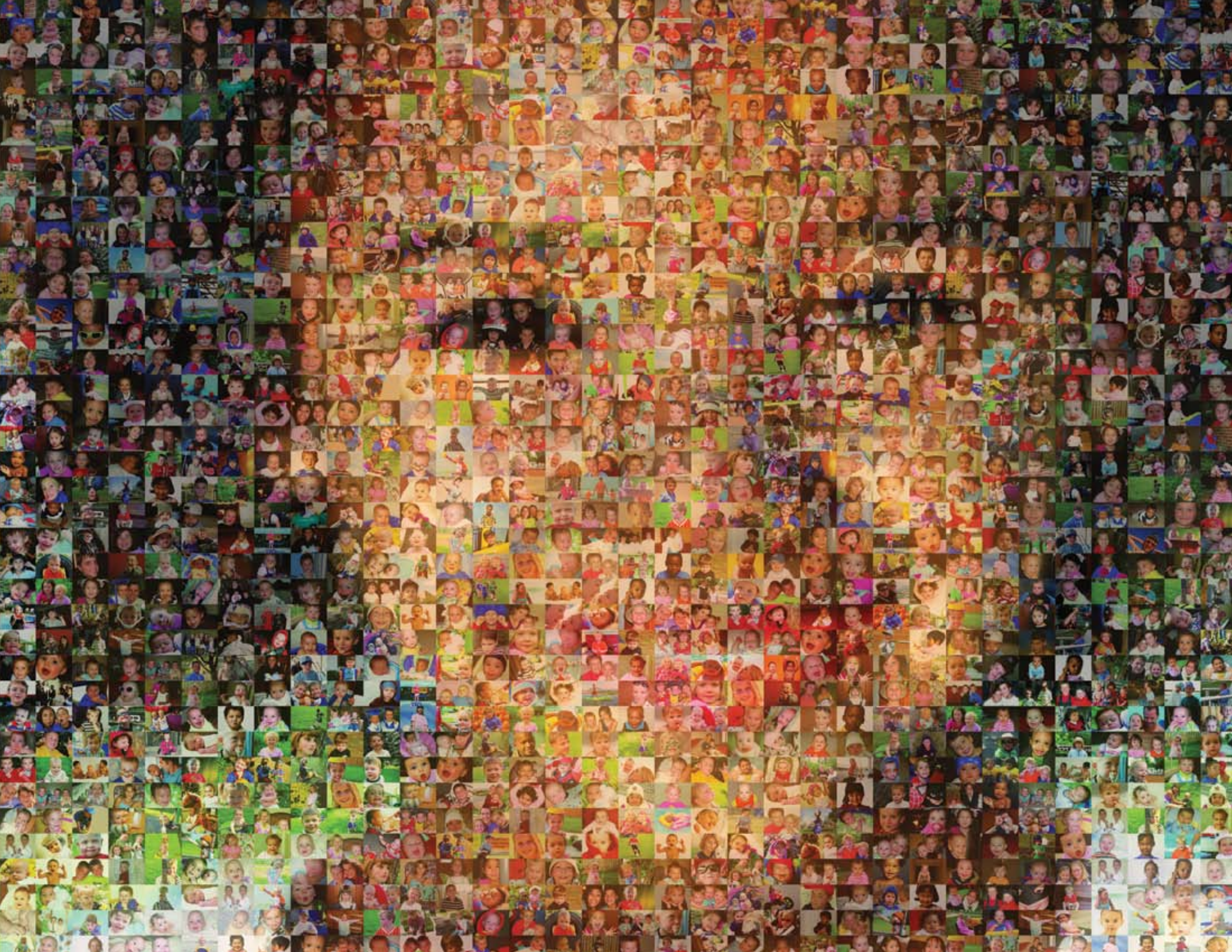
This Book is brought to you for free and open access by the Who we are at SHARE @ Children's Mercy. It has been accepted for inclusion in Children's Mercy Annual Reports by an authorized administrator of SHARE @ Children's Mercy. For more information, please contact hlsteel@cmh.edu.



2008

Annual Report

One Hospital. A Million Reasons.





Braden... p.12



Chloe... p.20



Colton & Carter...p.28

Expansion	6
Personalized Medicine	8
Family Centered Care	10
ADVANCE Program in Nursing.....	14
Academic Expertise.....	16
Access to Care	18
Guangzhou Children's.....	22
Child Obesity and Heart Health	24
Center for Pulmonary Development.....	26
Heart Valve Research.....	30
Simulation Center.....	32
Donors	34
Endowed Chairs	63
Medical Staff Leadership.....	64
Hospital Leadership.....	65
Stats & Finance.....	66



Dear Friends,

I've always loved kaleidoscopes. Ever since I was a child, I was fascinated by the ever-changing mosaics of color, light and patterns you could see as you twisted the end of the kaleidoscope. No two mosaics were ever exactly the same.

I also continue to be fascinated every day by the "mosaic" that is Children's Mercy Hospitals and Clinics. Every child, every parent, every staff member and every donor has a unique story to tell – no two stories are exactly alike. And it takes all of those different stories coming together to create the outstanding clinical care, teaching and research that make Children's Mercy one of the leading pediatric medical centers in the world.

Just as each patient's story is unique, the treatment provided to that child should be unique as well. That's why Children's Mercy has brought together an array of physicians and researchers to create our new Center for Personalized Medicine and Therapeutic Innovation. We have some of the world's best-known experts in testing and reformulating medications for children's use and how to tailor those medications for each specific child's need, based right here at Children's Mercy. As this program continues to expand in the coming years, health care professionals internationally will look to Children's Mercy for the vision and innovation to develop a completely new field of pediatric medicine.

That's just one of the exciting advancements you'll read more about in the mosaic of stories that make up this 2008 annual report. I hope you will take a few moments to explore the personal stories and the professional accomplishments that have occurred at Children's Mercy in the past year, and to realize that through your support, you have helped make these stories possible.

There are a million stories that make up the Children's Mercy mosaic. Thank you for being one of them!

Sincerely,

Randall L. O'Donnell, PhD

President and Chief Executive Officer



In early 2008, Children's Mercy announced plans for a 15-year, \$800 million expansion. By the end of the year, the nation's slowing economy had temporarily delayed some of the plans, although work is underway on several of the projects included in Phase I of the long-range plan.

Expansion projects in the Emergency Department and Radiology at Children's Mercy Hospital and Urgent Care and clinics at Children's Mercy Northland continued as planned with completion set for late 2009.

As the only Level I pediatric trauma center between St. Louis and Denver, the Emergency Department provided care for 66,484 patient visits in 2008. To better serve those families and improve patient flow, the expanded Emergency Department will double the number of triage areas and trauma rooms, expand the number of minor trauma rooms and provide separate waiting areas for families depending on the severity of the child's injury or illness.

Likewise, growth in MRI procedures – more than 30 percent in the past two years – has prompted expansion in Radiology. The MRI suite has been expanded to accommodate two machines, increase sedation areas and provide a separate patient waiting area. The addition of a 3 Tesla MRI will provide even greater visibility of anatomical structures and allow physicians to perform more advanced heart, neurological and other disease diagnoses.

Since opening in late 2003, Children's Mercy Northland has seen patient activity double, providing more than 30,000 patient care visits in 2008. To better serve Northland area families, nearly 20,000 square feet of new clinic, exam and staff work space is being added.



The new 3 Tesla MRI will provide enhanced imaging capabilities for advanced diagnostic procedures.




Expansion

Drs. Stephen Leeder and Stephen Spielberg



Personalized

Medicine



Pediatric physicians, nurses and health care professionals have always practiced “personalized medicine” in the sense that they view each child as an individual. What has changed in recent years is the remarkable advance of science, particularly in the field of genetics, that has improved the scientific understanding of what makes each individual unique.

That was the impetus for Children’s Mercy to create the new Center for Personalized Medicine and Therapeutic Innovation, and to hire one of the nation’s best-known specialists in pediatric clinical pharmacology to lead this exciting new program. Stephen P. Spielberg, MD, PhD, former Dean of the Dartmouth Medical School, joined the Children’s Mercy medical staff in September to build on the hospital’s exemplary program in pediatric clinical pharmacology.

Dr. Spielberg, a pediatrician, has more than 30 years’ experience in clinical pharmacology and therapeutics in both the academic and pharmaceutical industry arenas. Under his direction, the new Center for Personalized Medicine will be able to develop new and more precise diagnostic and treatment protocols, based on each child’s individual genetic make-up.

That ability to diagnose children’s individual needs and to develop customized treatments that will be the most effective for each child’s unique make-up, will be able to be used in a wide range of subspecialties throughout the hospital. As well, the cross-disciplinary nature of this novel program will serve to catalyze clinical and translational research in the field of pediatric therapeutics and also, will provide a unique framework for enhanced education of trainees, faculty and professional staff. In addition, Dr. Spielberg is already planning an international conference in pediatric personalized medicine to be held at Children’s Mercy in early 2010, so that the state-of-the-art work being done here can be shared with others to help children worldwide.



Drs. Kevin Kelly, Stephen Spielberg and Gregory Kearns



FAB members provide "Family Time" for parents of patients.

Affirmed, acknowledged and respected.

Our commitment to provide superior medical care is matched by our devotion to serving children and their families. Patient and family focused groups like the Family Advisory Board, the Teen Advisory Board and Consejo De Familias advisory board for families who speak Spanish assure that we maintain a focus on family-centered care.

The Family Advisory Board, composed of several staff members and 21 parents of kids with chronic diseases, helps us better understand the everyday effect that chronic illnesses have on our patients and their families. This past year, FAB produced "Winning Communications," a video that illustrates empathy at work and helps to educate staff on interaction with families.

Consejo De Familias Latinas/Hispanas is one of the first Spanish-speaking family advisory boards in the country. Overcoming language barriers, they have been working to make Spanish signage and translations clearer while helping the average Spanish-speaking family navigate through the health care process.

The Teen Advisory Board are teens with various diagnoses who offer support to each other, while providing their unique perspective of care to Children's Mercy. These teens are empowered to become engaged in their own care by educating staff on how their health care must differ from the care of children, including training physicians on interviewing techniques with teen patients.



Family



As a patient at Children's Mercy I felt at home. As a member of the Teen Advisory Board, I felt Children's Mercy listened and made things better.

SamanthaSmith
Teen Advisory Board member

Dr. John Gatti and Samantha Smith, TAB member

Centered Care



Once upon a time not so long ago, in a kingdom not so far away, there lived a brave knight named Braden. Braden was one of the most determined and courageous knights in the kingdom, as he had faced numerous health and development challenges during his first three years resulting in many visits to Children's Mercy Hospital and its clinics.

On December 28, at 3 years 3 months of age, he would encounter his most mighty foe, a monster named Cancer. After tests, doctors told Braden's family that he had a rare form of cancer called neuroblastoma. His was stage 4 and high risk which resulted in only about a 30 percent chance of survival.

Braden was sent to a section in the kingdom called 4-Henson. On this floor, they met the equally determined Dr. Richard Shore and his team of merry gentlewomen, Nancy and Becky. Braden began chemotherapy treatments to try to control this monstrous tumor that had also invaded his bone marrow and right hip. Braden was told that his battle would last about a year and be challenging at every step.

Braden found a strong support system in this kingdom to help him do battle with this cancer. Friends from around the world were hoping and praying for a victory. Those people became known as Braden's Army. Some of his most heralded warriors were the nurses and care assistants in the Hematology/Oncology Clinic and on 4 Henson. They were comforting, calming, and caring while helping him fight this vicious enemy.

Along the way, Braden met a beautiful princess whom he adored. Her name was Jamie and she met Braden at the clinic with a smile and an innate sense of understanding. Braden also drew great strength from fellow brave knights fighting their personal battles with their own cancer monsters. Their strength inspired Braden and his family to continue to battle even during the darkest of days. And with the help of them all, Braden was successful in his first battle with the monster and was able to have his tumor removed successfully by Dr. Ronald Sharp.

The monster does not give up easily. Neither does Brave Knight Braden. The next battle Braden faces is a bone marrow transplant which is where the story continues today. Braden's story is one of hope, faith, and great love. The kingdom of mighty warriors at Children's Mercy Hospital, Braden's Army, Braden's own great bravery and strength, and continual faith and love provide that hope. The hope that this story will end with "and he lived happily ever after for a very, very long time!"

Deliece Hofen (*Braden's mom*)

A Brave Knight

Braden's Story



Read more patient stories at www.MillionReasons.org

The ADVANCE Program was implemented to promote nursing professional development.

Program in Nursing

ADVANCE



As a teaching institution, the nursing clinical ladder has been an integral part of the development of nursing staff for several years. Children's Mercy has more than 800 advanced practice and specialty certified nurses, providing a level of nursing expertise that is unmatched in our region.

In March 2008, a multifaceted team of nurse clinicians and leaders implemented a new framework and structure for career advancement now known as ADVANCE – Achievements Demonstrating Valuable Advancements for Nursing Clinical Excellence.

ADVANCE is a five-tiered, peer administered program that promotes professional development by integrating career advancement into the clinical ladder program. Applicants are evaluated on eight key themes that were identified as intrinsic to the nursing profession – Credentials, Education of Self, Leadership, Education of Others, Community Service, Quality Improvement, Clinical Practice Analysis and Peer Coach.

The team operationalized these themes by creating a point based system that progresses according to the achievement level the nurse wishes to obtain. ADVANCE requires annual completion of a professional portfolio that is reviewed by a council of peers to validate completion of these achievements.

The ADVANCE Program began accepting portfolios for review in March 2008. Through the end of year, 618 portfolios had been submitted for review.



We looked at other Magnet designated hospitals and developed a program built on best practices for nursing education and development.

Cheri Hunt,
Vice President, Nursing.

Since its earliest years, academic medicine has been an integral part of Children's Mercy. Founders Katharine Berry Richardson and Alice Berry Graham were active in educating future physicians, including young African American physicians at the Wheatley Providence Hospital.


In primary academic affiliation with the University of Missouri-Kansas City, and through partnerships with Kansas University Medical Center, the Kansas City University for Medicine and Biosciences, and other educational institutions, we have continued to grow our academic programs. Our residency, fellowship and medical student programs not only train the next generation of pediatric specialists and researchers for Children's Mercy, but add to our growing reputation as a leader in academic medicine. We now offer fellowship programs in 22 specialties and attract residents from throughout the U.S. and beyond.

These academic programs are driven by our more than 300 faculty members – one of the largest pediatric faculties in the world.

In 2008, we added to our pediatric expertise with the addition of 50 new faculty members in the following specialty areas:

- | | |
|---------------------------------------|--------------------------------------|
| Adolescent Medicine | Hematology/Oncology |
| Allergy/Immunology | Pediatric Hospitalist Medicine |
| Anesthesiology | Infectious Diseases |
| Cardiovascular Surgery | Neonatology |
| CARE Team | Neurology |
| Dermatology | Urgent Care |
| Developmental and Behavioral Sciences | Ophthalmology |
| Emergency Medicine | Pathology |
| Endocrinology | Personalized Medicine |
| Otolaryngology | Physical Medicine and Rehabilitation |
| General Pediatrics | Pulmonology |
| Health Outcomes | Radiology |





*Dr. Shannon Carpenter,
Hematology/Oncology*

**Academic
Expertise**



Betty Boyd, RN, and grandchildren enjoyed the Children's Mercy Northland birthday celebration.

Access to Care

Every child deserves access to high quality medical and psychosocial care.

Randall L. O'Donnell, PhD, President and CEO

Making sure that all children have access to the highest quality medical care is an enduring commitment at Children's Mercy. That's one reason why Children's Mercy offers services at multiple locations in greater Kansas City, as well as numerous outreach clinics in 10 different cities throughout Missouri and Kansas.

In November, Northland families joined us in celebrating the fifth birthday celebration of one of those locations - Children's Mercy Northland at 501 NW Barry Road.

Children's Mercy has always served families from northern Kansas City and beyond, even extending into Iowa, Nebraska and Northern Kansas. The opening of Children's Mercy Northland in 2003 brought many of our specialty services closer to home for those families.

Children's Mercy Northland has reported steady growth since opening. Outpatient visits topped 42,000 in 2008, a 34 percent increase since opening, and the Urgent Care Center recorded more than 19,000 visits, a 46 percent increase during that same period.

To keep up with the burgeoning number of patients being seen and to ensure care remains a top priority, Children's Mercy Northland has grown from 21 employees to 65, opened additional clinics, and is expanding to add more exam and treatment rooms.



Children's Mercy Northland staff celebrated the facility's fifth year in operation with an open house for the community.



Matters of the Heart

Chloe's Story

Read more patient stories at www.MillionReasons.org

On August 11, 1995 we had our first child. A beautiful baby girl we named Chloe Isabella.

She was perfect. We knew this because the doctor's told us so. Not to mention how we felt about her. On the second day in the hospital in the middle of the night she began to get very fussy, but in a way that nothing we did soothed her.

Fast forward to later that morning and we now knew that something was wrong with her heart.

Chloe was taken by ambulance to Children's Mercy Hospital. After many tests and discussions, we were told that Chloe would need a full open heart surgery to repair multiple defects. There were holes, and a valve that didn't work properly and her left pulmonary branch was missing and coming from her aorta instead.

After a very long surgery, she didn't clot well, didn't do well coming off of bypass and her blood pressure was not increasing the way it should. Many hours later when we finally got to see her, we also saw her surgeon sitting by her bed watching her. It was unbelievable to us that a surgeon would stick around so many hours after a surgery to make sure this child was okay. This is the way it works at Children's. Its not like other hospitals, the depth of concern for each child goes beyond a job and it is what keeps parents going through the worst of times.

The next morning Chloe's heart stopped. They revived her and after many prayers and the care of the ICU, Chloe turned the corner and never looked back. She is still seen by her beloved Cardiologist Dr. Simon every year to two years and we know that she will have a heart valve transplant soon.

Through the years, she has also been treated for other birth defects and illnesses by the Endocrinology Clinic, the Neurosurgery Clinic and many visits to the Radiology Clinic. Chloe has spent many days at CMH and we have always felt so fortunate that it is here for her. Her life is far more "normal" than we could have ever imagined and we owe so much of that to CMH. Chloe knows that she still has hurdles in front of her, but she also knows that her family at home and her family at Children's will help her get over those. Words have not yet been created that can fully express what it is to watch your child in a situation such as Chloe's, but luckily there is a hospital that fully understands it.

Melissa Vollenweider (*Chloe's mom*)

Guangzhou



Dr. Randall O'Donnell spoke at the national conference of children's hospitals in China.

We are more than 10,000 miles apart, our doctors communicate in two different languages, and we are a part of two different cultures.

Yet, both have the same goal: To provide state-of-the-art health care for children.

In 2003, Children's Mercy Hospitals and Clinics developed an international physician exchange program with the Guangzhou Children's Hospital in the Guangdong province of China.

Nearly 20 Children's Mercy physicians, nurses and administrators have visited China, and 13 physicians, nurses and administrators from Guangzhou have trained at Children's Mercy. In 2008, Children's Mercy President and CEO, Randall L. O'Donnell, PhD, visited Guangzhou and was a featured presenter at the national conference of all the children's hospitals in China.

In addition to sharing our expertise in western medicine, the cultural exchange has provided our medical staff a global sense of the practice of medicine including traditional Chinese medicine and alternative therapies.

The benefits of this relationship are already evident in the implementation of different practices at each hospital and more is still to come. We are currently partnering on quality improvement and research projects focusing on pain management and infection prevention. We are also sharing our world renowned expertise in minimally invasive surgery techniques to help Guangzhou Children's Hospital establish its own program.

They are one of the best children's hospitals in their country and we are one of the best in our country; so only good things can come out of our relationship.

Randall L. O'Donnell, PhD,
President and CEO of Children's Mercy.

Children's

Children's Mercy CEO Dr. Randall O'Donnell toured the Intensive Care Unit of Guangzhou Children's Hospital during his trip to China.





Child Obesity and Heart Health

We've known for some time that obesity is unhealthy for children, but research published by Geetha Raghuvver, MD, MPH, Children's Mercy cardiologist, and Associate Professor of Pediatrics, University of Missouri-Kansas City School of Medicine, demonstrates just how devastating obesity and overweight can be on the heart health of children.

Dr. Raghuvver discovered that the vascular age of these children — the age at which the level of carotid artery thickening would be normal for their gender and race — was about 30 years older than their actual age.

Obese children may have several risk factors for developing coronary artery disease such as abnormal lipid levels, insulin resistance and diabetes, hypertension or tobacco smoke exposure. Each of these risk factors has an effect on the buildup of artery plaque and if there are several risk factors in a child the effect on the build up can be exponential.

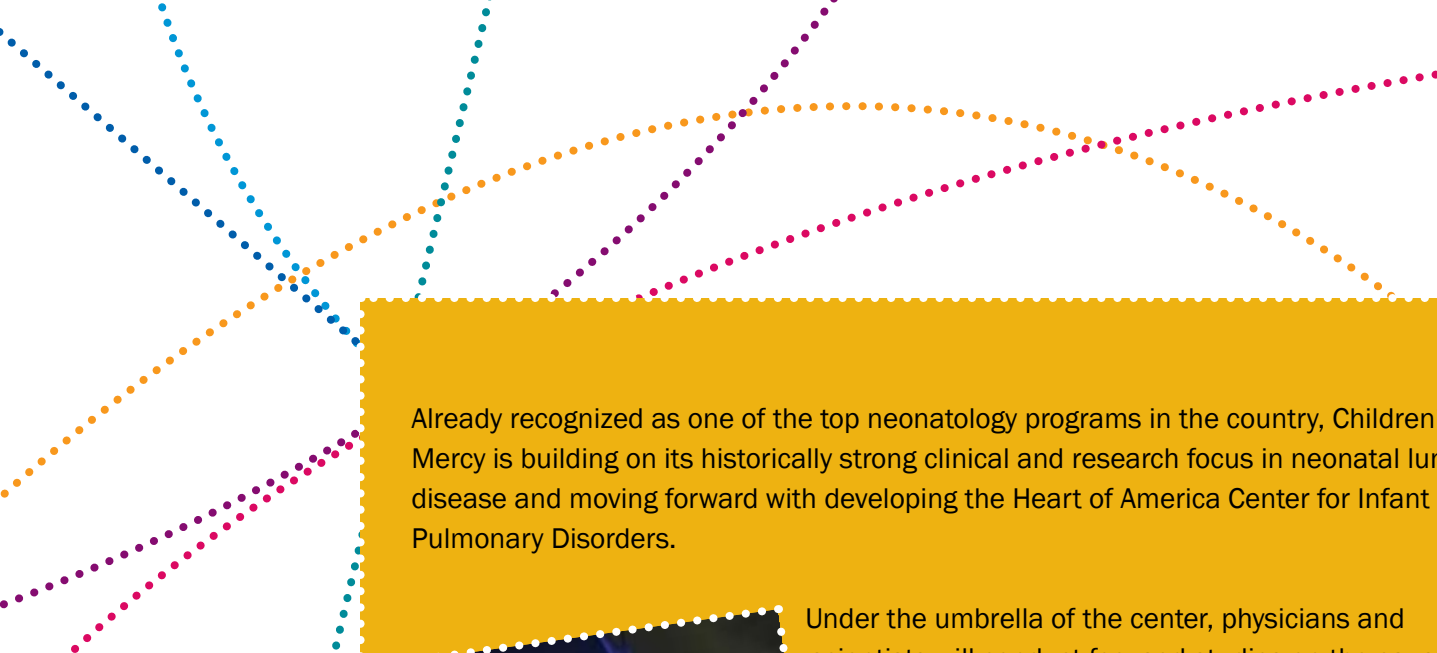
Children with obesity and risk factors who demonstrate premature aging of their arteries should be treated aggressively. This includes lifestyle changes such as diet, activity, and avoiding tobacco smoke exposure, and in some instances medications to control lipid levels, hypertension, insulin resistance and diabetes.

Dr. Raghuvver's research was presented at the American Heart Association's Annual Scientific Meeting and was widely reported by international news media.


"There's a saying that 'you're as old as your arteries,' meaning that the state of your arteries is more important than your actual age in the evolution of heart disease and stroke. Our research indicated that the state of the arteries in some of these children is more typical of a 45-year-old," explains Dr. Raghuvver.



Dr. Geetha Raghuvver reviews research abstract information with UMKC medical students Joseph Le and Spenser Menees.




Already recognized as one of the top neonatology programs in the country, Children's Mercy is building on its historically strong clinical and research focus in neonatal lung disease and moving forward with developing the Heart of America Center for Infant Pulmonary Disorders.



Under the umbrella of the center, physicians and scientists will conduct focused studies on the causes and treatments of bronchopulmonary dysplasia or BPD, as well as other common and important lung problems of full-term infants. The center will serve as a regional resource, drawing upon the specialized skills of the more than 20 Children's Mercy neonatology faculty members, as well as experts in pulmonology, immunology and other subspecialty areas. Internationally recognized investigator in neonatal pulmonary disorders William Truog, MD, Children's Mercy Neonatologist, Professor of Pediatrics at the University of Missouri-Kansas City School of Medicine, and The Sosland Chair in Neonatal Research, is the director of the center.

Children's Mercy offers the highest level neonatal intensive care unit (Level IIIc) in the region and is an established leader in providing ECMO and nitric oxide to enable healing of newborn lungs, backed by outcomes that prove the success of these lifesaving treatments.

A healthcare professional with blonde hair, wearing a dark blue scrub top, is shown in profile, looking intently at several medical monitors in a neonatal intensive care unit (NICU). The monitors display various data, including waveforms and numerical values. The professional is holding a clipboard and a pen, suggesting they are reviewing patient information. The background is filled with medical equipment, creating a clinical and focused atmosphere.

The Level IIIc neonatal intensive care unit offers ECMO and other services not available elsewhere in the region.

Center for Pulmonary Development

The Heart of America Center for Infant Pulmonary Disorders will harness our technical and human expertise, with the end goal of reducing the suffering of babies.

Howard Kilbride, MD, Neonatology Section Chief
and Professor of Pediatrics,
University of Missouri-Kansas City School of Medicine.

Double Trouble

Colton and Carter's Story



Our first born, Colton, came two days late, weighing 9 lbs, 12 ounces. Despite entering the world via emergency c-section, he was healthy— at least for the first 18 hours. Then Colton began having seizures and was transferred to Children’s Mercy Hospital immediately.

I still remember the transport team holding my hand as I had to say goodbye to my son. The doctors ran numerous tests and determined that he had suffered a stroke in utero. I was stuck in Lawrence alone, but not a second went by where I wasn’t being informed of his status by the Children’s Mercy doctors, nurses, and support staff. When I finally got to them, I could feel the love and dedication that the Children’s Mercy staff gives to each and every family that enters their doors. All of the staff became family within the seven days before we were discharged.

Colton was sent home on anti-seizure medication and due to the quick and accurate work of the Children’s Mercy staff, is now a perfectly healthy three-year old with no sign of side effects or delay.

Two years and a month later, I began pre-mature labor in the 28th week of our second pregnancy and delivered a 3 lb preemie, Carter. We didn’t even skip a beat when asked which level three hospital in town we wanted him transported to.

Carter spent two months in the NICU, during which we were taken care of by the Children’s Mercy family. Carter got to leave a whole month before his due date and is now a 38 lb. one-year old with no health problems. He’s performing at his adjusted age and we owe it all to the loving care that Children’s Mercy provided.

Beyond the exceptional care we were so blessed to receive for both our boys, what we love about Children’s Mercy is that they don’t just discharge you and move on. Both of our boys were followed by specialists afterwards and are affectionately remembered as family. There’s no better place and we owe them the world— times two!

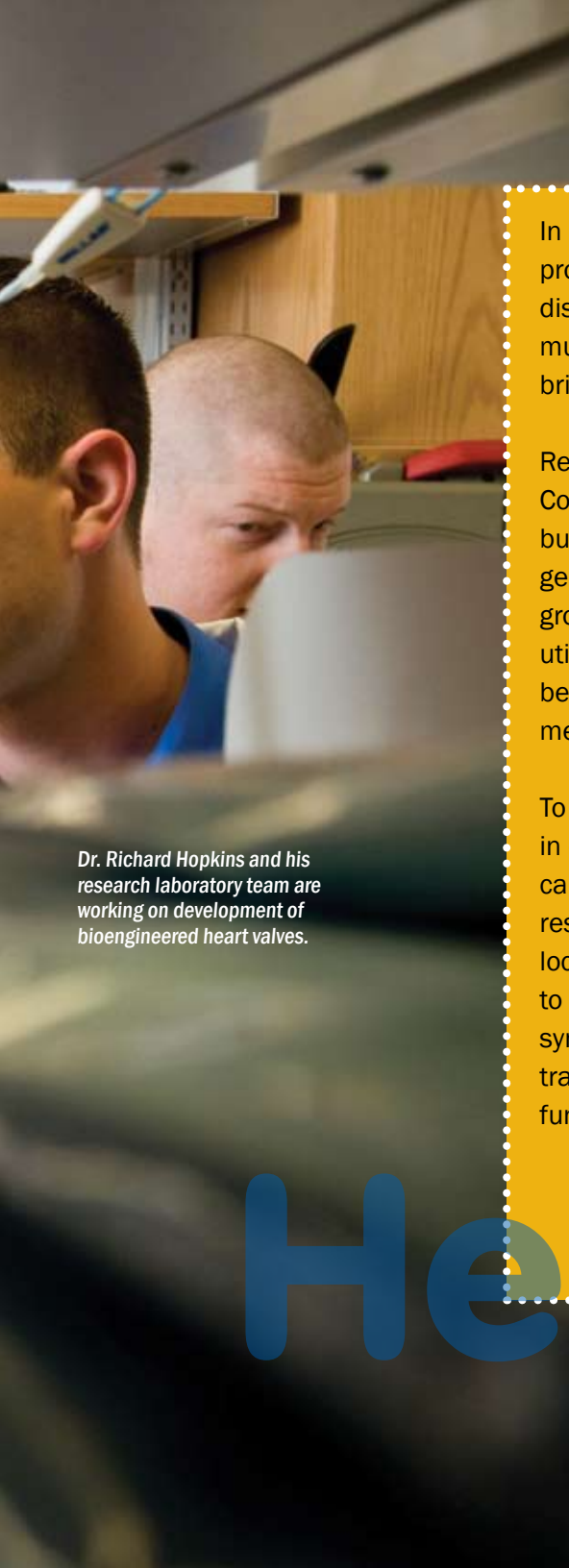
Bobbie Clark *(Colton and Carter’s mom)*



We are firmly on the cutting edge of pediatric cardiac research that we think will revolutionize heart valve replacement.

Richard Hopkins, MD, Director, Cardiac Surgery Research Laboratories, Chief, Adult/Adolescent Congenital Cardiac Surgery and Professor of Surgery, University of Missouri-Kansas City School of Medicine.





Dr. Richard Hopkins and his research laboratory team are working on development of bioengineered heart valves.

In 2008, Children's Mercy performed 85 procedures to implant prosthetic heart valves in children with congenital heart defects or disease. And every one of those valves will need to be replaced multiple times through the child's life, with each operation bringing additional risks.

Researchers and scientists in The Ward Family Center for Congenital Heart Disease at Children's Mercy, working in the burgeoning field of regenerative medicine, are leading research in cell and gene engineering to construct living replacement tissue that has the potential to grow with these children. Since these bioengineered heart valves can be developed utilizing the patient's own cells, implantation of such living structures would not be constrained by typical barriers such as rejection or the inherent problems with mechanical valves.

To support this work, as well as other innovative therapeutic and research efforts in cardiology and cardiac surgery, Children's Mercy began expansion of the cardiac catheterization labs, cardiac operating rooms and tissue engineering research clinical lab. The end result will be two cardiac surgery operation rooms located directly adjacent to two new hybrid cardiac catheterization labs, designed to allow the cardiologists and the cardiac surgeons to care for the patients in synchronization. A tissue engineering lab will be connected to both allowing for transfer of tissue in a safe and sterile manner. The expansion is supported in part by funding from the Hands and Hearts Auxiliary Red Hot Nights⁵ event.



*Dr. Richard Hopkins,
Cardiac Surgery Research*

Heart Valve Research

Our simulators allow clinicians to safely learn, practice and repeat a skill or procedure until proficiency is achieved.

Christopher Kennedy, MD, Co-Medical Director, Center for Excellence in Pediatric Resuscitation, PEM Fellowship Director, Associate Professor of Pediatrics, University of Missouri-Kansas City, School of Medicine.

It's an age-old quandary: How do you gain experience without the opportunity to practice, especially in health care where decisions affect life and death?

In 2008, with support from the Chapman Foundation, Children's Mercy created the state-of-the-art Center for Pediatric Excellence in Resuscitation to support health care trainees and professionals in developing and enhancing skills required to provide medical assessment and treatment of children in emergency situations.

Equipped with life-like patient simulators, the Center for Pediatric Excellence in Resuscitation Lab and mobile training unit enables health care professionals and students to practice relevant pediatric scenarios and acquire basic pediatric care skills in a low-risk setting.

The benefits of the center are tangible: enhanced medication administration and safety, improved patient assessment and bedside decision making, competency-based skills assessment, realistic hands-on experience with new procedures and equipment, and strengthened teamwork and communication skills.

In addition to being a training resource for hospital staff, the center serves community physicians and staff from other hospitals as well. In partnership with the Children's Mercy Emergency Department, the center assisted in the training of 14 Omaha Children's Hospital pediatric emergency medicine physicians in preparation for the opening of that hospital's new trauma center.



Dr. Bobby Schremmer monitors staff during a mock procedure in the Simulation Center.



Simulation Center

RED H♥T
NIGHT⁴



Donors

Every child should have access to the best health care possible. Thanks to the safety-net of support our donors provide for Children's Mercy, we are able to fulfill our mission of providing affordable, easily accessible, high quality comprehensive health care to all children, regardless of inability to pay, while also pursuing our vision of being the best children's hospital in the country.

This past year, more than 8,600 individuals, corporations, foundations and other groups helped us provide millions in charity and uncompensated care, expand our services and programs, recruit more world class pediatric specialists, and enhance our technology and facilities to provide the highest level of care anywhere in the region.

The hospital's signature fund-raising event, Red Hot Nights⁴, hosted by the Hands and Hearts for Children auxiliary, raised more than \$650,000 to support the renovation and expansion of the Emergency Department at Children's Mercy. When completed in fall 2009, the new Emergency Department will have 40 exam rooms, twice as many trauma rooms, new waiting areas for families, and improved patient and staff flow.

We are thankful for the contributions of each and every one of our donors. They are more than just contributors; through their time, talent and monetary support they are all reasons why more than 400,000 families chose Children's Mercy for their child's care in 2008.



Honorary Chairs: The Bernstein Family
Dr. Phyllis and Bob Bernstein, Susan Bernstein Luetje and Chucker Luetje,
Christina and David Bernstein, and Steve Bernstein.

Our donors have different backgrounds, different experiences with the hospital, and different reasons for giving, but in the end, they all give because they care about keeping children healthy and safe.

D. Bradley Leech,
Vice President for Resource Development

John Mitchell and Kate Mitchell, Event Co-Chairs, David Hunt, Hands and Hearts President, Marti and Gordon Lansford, Event Co-Chairs.



Children's Circle of CareSM

Leaders in Giving

The Children's Circle of Care honors Children's Mercy's leading benefactors. These individuals, couples, family foundations and privately held corporations make gifts of \$10,000 or more in cash or appreciated assets to Children's Mercy in a calendar year. Royal Circle membership is awarded to donors whose cumulative, present value giving totals at least \$1 million since January 1, 1995.

A Rich History

In January of 2007, Children's Mercy was invited to join the prestigious Woodmark group, a consortium of the top 24 free-standing pediatric hospitals in North America that celebrate their top donors through the Children's Circle of Care. Since the Woodmark group was founded, Children's Circle of Care members have contributed over \$2.6 billion to 24 participating children's hospitals across North America. The mission of the Children's Circle of Care is to *advance philanthropy that supports patient care, teaching, research, and advocacy through education, and to recognize leading benefactors of participating children's hospitals.*

A Lasting Impact

Funds from Circle donors allow Children's Mercy to lead the way in advancing patient care, training the next generation of pediatric specialists, and making scientific discoveries that will lead to life-saving treatments for children. The Children's Circle of Care also ensures that Children's Mercy can continue to provide undivided attention and unsurpassed care to every child in our community and beyond, regardless of their family's inability to pay.

An International Community

Children's Circle of Care members are part of an international community, committed to ensuring that every child has access to exceptional health care. Circle members from across the continent convene each year at the North American Leadership Conference and Gala. Hosted by a different leading children's hospital and held in a different city each year, this premier event offers guests the opportunity to meet prominent philanthropists, physicians, researchers and clinicians from North America, learn about the latest advances in pediatric health care, and celebrate leadership in pediatric health care philanthropy.



Children's Mercy
HOSPITALS & CLINICS
www.childrensmc.org

CHILDREN'S MERCY HOSPITALS AND CLINICS

CIRCLES OF GIVING

The **Circles of Giving** recognize and honor those individuals who make gifts to Children's Mercy Hospitals and Clinics on an annual basis. Membership is based on gifts received throughout the calendar year. The mission of all three circles is to advance philanthropy which supports patient care, teaching, research and advocacy through educating and recognizing the leading benefactors of Children's Mercy Hospital.

The **Circles of Mercy, Hope and Dreams** recognize donors for their cumulative annual gifts at the following levels:

Circle of Mercy - \$5,000 - \$9,999

Circle of Hope - \$2,500 - \$4,999

Circle of Dreams - \$1,000 - \$2,499

The **Circles of Giving** were established as part of an ongoing effort to encourage philanthropic support of operations at Children's Mercy and raise awareness about the little things which add up to immeasurably enhanced quality of life for thousands of children and their families. Whether your gift supports the operating fund, purchases a piece of equipment, or increases an endowed fund for cancer research, it all adds up to support of the mission which makes Children's Mercy the special place we all know it to be. We want our donors to know what a difference they make in the lives of the children for whom we care. We hope that these Circles of Giving do just that.

Children's Circle of Care

Mr. and Mrs. C. Floyd Anderson
 Mr. and Mrs. John D. Anglin
 Anonymous
 Mrs. Lucille Armacost
 Mr. and Mrs. James J. Ascher, Sr.
 Mr. Andrew Atterbury and Mrs. Gwyn Prentice
 Mr. and Mrs. James Bartimus
 Mrs. Joyce D. Batterson
 Sarah and Jon Baum
 Mr. and Mrs. Bryan J. Beaver
 Dr. Phylliss Bernstein and Mr. Robert Bernstein
 Jo Lynne and Dan Beutler
 Mrs. Mary S. Branton
 Mrs. Saurine Brown
 Mr. and Mrs. Michael J. Bukaty
 Dr. and Mrs. V. Frederick Burry, Jr.
 Mr. and Mrs. Charles D. Burton Blish and Michael Connor
 Mr. and Mrs. Thornton Cooke II
 Dr. Karen S. Cox
 Laura and Richard Cray
 Mr. and Mrs. Robert R. Cross
 Mary Ellen Daly
 Dr. and Mrs. William B. Daniels
 William A. Dann
 Bill and Rachel Drake
 Mr. Kevin A. Dunn
 Mr. and Mrs. William H. Dunn, Sr.
 Rayla and Jerry Erding
 Francis Family Foundation
 Mr. and Mrs. James P. Frickleton
 Mr. and Mrs. Richard I. Galamba
 Mr. and Mrs. David L. Goebel
 Jack Goldstein Charitable Trust
 Mr. and Mrs. Stephen M. Gorny
 Mr. and Mrs. Donald J. Hall
 Mr. and Mrs. Michael J. Hayes

The Hoffman Family Foundation
 Amy and Paul Holewinski
 Elizabeth Goddard PhD and Gregory W. Hornig MD
 M.R. and Evelyn Hudson Foundation
 Dr. and Mrs. John D. Hunkeler
 Judy and Graham Hunt
 Mr. and Mrs. Charles H. Hunter
 Sandy and David Johnson
 Muriel McBrien Kauffman Foundation
 Mr. and Mrs. Thomas L. Keaveny II
 Mr. and Mrs. Whitney E. Kerr, Jr.
 Demi Lloyd Kiersznowski and David Kiersznowski
 Dr. and Mrs. Howard W. Kilbride Kirk Foundation
 Rebecca and William Krueger
 The Lockton Family
 Angie and Chris Long
 Dee and Fred Lyons
 Susan Lordi Marker and Dennis Marker
 Mr. and Mrs. Henry J. Massman IV
 Ms. Peggy R. Massman
 Mr. and Mrs. Harry C. McCray, Jr.
 Mr. and Mrs. Michael A. Merriman
 Mr. and Mrs. John W. Mitchell, Jr.
 Mr. and Mrs. John H. Mize, Jr.
 Morgan Family Foundation
 Drs. Brett H. and Cynthia A. Mueller
 Dr. J. Patrick and Jane Murphy
 Mr. and Mrs. Timothy R. Murphy
 Mr. and Mrs. Henry H. Newell
 Jeannette T. Nichols
 Mr. and Mrs. James B. Nutter, Sr.
 Mr. and Mrs. James B. Nutter, Jr.

Drs. James and Lina O'Brien
 Dr. and Mrs. Randall L. O'Donnell
 Mr. and Mrs. H. Tony Oppenheimer with The Oppenheimer Brothers Foundation
 Dr. and Mrs. Daniel J. Ostlie
 Mr. and Mrs. W. Keith Pence
 Mr. and Mrs. John Pia

Ginzy Schaefer Music Therapy Fund
 Mr. and Mrs. Thomas M. Scott
 Ralph L. Smith Foundation
 Mary Keaveny Soden and Family
 Mr. and Mrs. Morton I. Sosland
 Mr. and Mrs. Neil N. Sosland
 Mr. and Mrs. Jack W. Steadman

Ms. Melinda S. Wehrle
 Mr. and Mrs. Scott M. Westlake
 Mrs. Sally K. Wood
 Mr. and Mrs. William E. Young
 Dr. and Mrs. David L. Zwick



Mr. and Mrs. Jon G. Piebenga
 Mr. and Mrs. Fred H. Pryor
 Mrs. Loretta D. Riss
 Cristy and Charlie Roberts
 The Honorable and Mrs. Edward D. Robertson, Jr.
 Marvin S. Robinson Charitable Trust
 Sarli Family Foundation

Mr. Paul E. Stewart
 Jo and John Stueve
 Mr. and Mrs. John W. Sutherland
 Mrs. Mariel T. Thompson
 Mr. and Mrs. Robert F. Walker
 Mrs. Adelaide C. Ward
 Thomas S. Watson Family Foundation
 Mr. and Mrs. A. Keith Weber

Children's Circle of Care members, Dr. Karen Cox, Mike Haverty and Marlys Haverty attended the 2008 CEO Reception held at the Carriage Club.

Circle of Mercy

(\$5,000 - \$9,999)

A & C Investments Inc., LLC
Adams Automotive Group, Inc.
Afco Steel
Alstom Power Inc.
American Century Companies
Foundation
American International Group Inc.
Anonymous
Mr. and Mrs. Timothy M. Aylward
Mr. and Mrs. James G. Baker
Bank of Kansas City
Janice N. and Herman G. Bartz, Jr.
Charitable Trust
Hulda C. Bass Revocable Trust
Berkel & Company Contractors,
Inc.
Mr. and Mrs. Gene M. Betts
Dr. and Mrs. Robert E. Binda, Jr.
Blish-Mize Co.
Blue Cross & Blue Shield of
Kansas City
BMO Capital Market
Zara Boals Estate
Boston Financial Data Services
Bowen Engineering Corporation
Breakthrough Marketing & Design
& Technology, Inc.
Dr. Mindy Brown
Mr. Jeffrey Buck
The Bukaty Agency
Mr. and Mrs. Timothy R. Cable
Callahan Transportation, Inc.
Cass Medical Center
Christenberry Collet & Company,
Inc.
Coleman Family Foundation, Inc.

Erdene Corley Advised Fund
Jared Coones Pumpkin Run
Mr. and Mrs. John W. Cowden
Crandall & Company, LLC
Mr. and Mrs. William F. Crandall
Crawl for Cancer, Inc.
George W. Crum Irrevocable Trust
Mr. and Mrs. Gary Davis
Delta Dental
Mr. Andrew J. Dodge
Terry and Peggy Dunn
David Earhart Mercy Fund
Eddie's Lounge
Electronic Data Systems, Inc.
Emerson Electric Co.
eVergance
F.G.F. Company
Doug and Caryn Firebaugh
Foundation
Mr. and Mrs. Douglas A. Firebaugh
United Way of Franklin County
Association
Mr. and Mrs. James R. Gamble
Mr. Chuck Gilbert and Ms. Lori
Dean
Ms. Monique Esposito and Mr.
Steven A. Gill
Mrs. Jacquelyn Golden
Mr. and Mrs. William D. Grant
Haake Insurance
Hallmark Cards, Inc.
Hanson Pipe & Precast Inc.
The Harvest Ball
Frances Havens Trust
Hayes Drilling, Inc.
Mr. and Mrs. Jack W. Hayhow, Jr.
Mr. and Mrs. Bush C. Helzberg
Henry County United Way, Inc.
Paul H. Henson Pioneer Club

United Way of Higginsville, Inc.
Highwoods Properties
Mr. and Mrs. Michael L. Hiron
Mr. and Mrs. Charles J. Hoffman,
Jr.
Mr. Cliff C. Jones
Kansas Alpha Phi Delta Theta
- University of Kansas
Karbank Family Foundation
Kirkland & Ellis Foundation
Ms. Lisa Koppelman-Elliott
Mr. Joshua Landy
Tom Lange Co., Inc.
Mr. and Mrs. Michael R. Lemke
Estate of Bernice V. Lenhart
Lytle Construction, Inc.
Charles R. Martynowicz
Mr. and Mrs. Matt Masilionis
Dr. Vickie Massey
Matthews Leasing, LLC
Ms. Molly A. McGee
Mr. and Mrs. Patrick J. McMahon
Melissa's Ride
Mrs. Ellen M. Meyer
Mr. and Mrs. James R. Miller, Jr.
State of Missouri
Bill Mounkes Charity Golf Fund
NCM Associates, Inc.
Nelson Reproductive Services
United Way of Nodaway County
Nordstrom
Olympic Transportation Services,
Inc.
Mr. and Mrs. Neal L. Patterson
Mr. Carl D. Peterson
Norman & Elaine Polsky Family
Supporting Foundation
Mr. and Mrs. Norman Polsky
Mr. and Mrs. Thomas D. Reichl

Reynolds, Inc.
River Ranch Fresh Foods, LLC
C. H. Robinson Company
The Roetheli Lil' Red Foundation
Mrs. Gerean Rudnick
Dr. Rebecca Schaefer
Ms. Suzanne M. Schaefer
Mr. and Mrs. John Schrader
Mr. and Mrs. Mark S. Schroer
Tommy Simone Memorial
Scholarship Fund
Mr. and Mrs. R. Pete Smith
George Sombart Trust
Spirit
Sprint NASO Tournament
Mr. and Mrs. Bill Stapp
Mr. and Mrs. Thaddeus J. Stephens
TC Transport, Inc.
Mr. and Mrs. Jonathan S. Thomas
Toyota Motor Sales, U.S.A., Inc.
Kansas City Regional Office
Tradebot Systems, Inc.
Matthew C. Veatch
United Community Funds of
Vernon County
The Village Crawfish Festival
Dan and Pamela Williams
Mr. and Mrs. James E. Wilson
Benjamin Wood, Jr. and Evelyn Fay
Wood
Wulfsberg Reese Colvig &
Firstman
Mr. and Mrs. David C. Wysong
Zurich American Insurance
Company
Circle of Hope
(\$2,500 - \$4,999)
A&A Express, Inc.

AAS Cleaning Systems, LLC
The Active Network
Aerotek
AFLAC, Inc.
Mr. and Mrs. James P. Alderman
Allied NA Ins Brokerage of
Missouri, LLC
Mr. and Mrs. Robert R. Alumbaugh
AMC Theatres
Dr. Laura S. Fitzmaurice-Amick
and Mr. Mickey L. Amick
Andrews McMeel Universal
Foundation
Anonymous
Atchison Area United Way
Mr. and Mrs. Charles L. Bacon, Jr.
Bank of Kansas City, N.A.
George K. Baum & Company
Mr. and Mrs. Jeffrey R. Berg
Mr. and Mrs. Todd E. Bleakley
Mr. and Mrs. Curtis T. Bliss
Board of Education Reorganized
School District No. 7
Gracia G. Bremer Charitable
Foundation
Bryan Cave LLP
Mr. and Mrs. Robert Bukaty
Bunzl Mid Central Region
Jessie J. Burroway Charitable Fund
Calavo Growers, Inc.
Calixtro Distributing Company, Inc.
Bob D. Campbell and Company,
Inc.
Ernie Campbell Oar House Inn
Auction
Capital Electric Construction
Company, Inc.
Catholic Foundation
Cereal Food Processors, Inc.

Mr. Merle Chaney and Ms. Ruby Lee Chaney Trust
 Ms. Ruby L. Chaney
 Mr. and Mrs. Edward D. Chapman
 Chelan Fresh Marketing
 Children's Mercy Family Health Partners
 Mr. and Mrs. William J. Chisholm, Jr.
 Chrysler Financial
 Church Brothers, LLC
 Mr. and Mrs. Joseph L. Cisper
 C. J. Coleman and Company, LTD
 Mr. and Mrs. Andrew G. Colombo
 Connecticut General Life Insurance Company
 Contract Furnishings, Inc.
 Mr. Clayton Cooley and Ms. Laura Hopper
 Dr. Linda D. Cooley
 Courage Over Fear
 Ms. M. E. Creveling
 Elmer Dalke Charitable Foundation
 Harry Darby Trust
 Ms. Betsy A. Dearing
 Minnie S. Denslow Trust
 Mr. and Mrs. Eric Dercher
 Document Management Solutions, LLC
 Ms. Carole C. Douglas
 Juliette M. Eliscu Trust
 Mr. and Mrs. Dennis J. Eskie
 Evans/Evco Company
 Evan-Talan Homes, Inc.
 Mary Elizabeth Ewing Foundation, Inc.
 Experitec, Inc.
 Mr. and Mrs. David M. Fowler
 Mr. Joseph A. Galeazzi

Mr. and Mrs. Gregory M. Galvin
 Mr. and Mrs. David Garrett
 Dr. and Mrs. James A. Glenski
 Golden Valley FOE No. 3667
 Mr. Michael S. G. Golden
 Arvin Gottlieb Charitable Foundation
 Grand Aerie Fraternal Order of Eagles/MO State Aerie, F.O.E.
 Gary and Evelyn Grist
 Mr. and Mrs. Timothy G. Haake
 Ms. Judene Hansen
 Ms. Jane E. Hartnett
 Hays Companies
 Ms. Karen L. Hempel
 Mr. and Mrs. Frank M. Hendricks
 Ms. Patricia Henry
 Ms. Barbara J. Hicks
 Ms. Jean M. Hite
 Ms. Diana R. Hoffman
 Dr. and Mrs. Marius M. Hubbell, Jr.
 Mr. and Mrs. Bart H. Hunt
 Mr. David T. Hunt and Ms. Amy E. McAnarney-Hunt
 Husch Blackwell Sanders, LLP
 I. Kruger, Inc.
 Raymond James and Associates, Inc.
 Jayhawk Capital Management
 Jenkins and LeBlanc, PA
 JLT Park, LTD
 Mr. and Mrs. Philip A. Jones
 Mr. and Mrs. Ralph L. Kaeser
 Robert B. Kahn Trust
 Kiewit Power Constructors Co.
 Mrs. Barbara M. King
 Mr. and Mrs. Herbert M. Kohn
 Mr. Irving Kuraner
 Mr. and Mrs. Stuart Leighty

Mr. Lawrence C. Lester
 Mr. and Mrs. Paul M. Licausi
 Ms. Kathleen M. Liggett
 Mr. and Mrs. Robert A. Long
 Mr. and Mrs. Douglas Loughery
 Mallin Brothers Company, Inc.
 Mr. and Mrs. Robert E. Marsh
 Marjorie Martin Trust
 Matrix
 McCarthy Auto Group
 Mr. and Mrs. John C. McCarthy
 Mr. and Ms. Charles McCrary
 MCL Distributing, Inc.
 Albert J. Mehl Trust
 Catherine V. Merrill Foundation
 Merrill Iron & Steel, Inc.
 Dr. Peter and Margot Mestad
 Microsoft Giving Campaign
 Midland Loan Services
 Mr. and Mrs. Scott Mills
 Mr. and Mrs. John W. Mitchell
 NatWest
 Paragon Capital Management, LLC
 United Way of Paola, Kansas, Inc.
 Pepsi Americas
 Pfizer United Way Campaign
 Pleasant Hill United Community Funds, Inc.
 Polsinelli Shughart
 Dr. and Mrs. Jay M. Portnoy
 The Private Bank
 Dr. and Mrs. John A. Reaney
 Redkin
 Roberts & Schaefer Company
 Mr. and Mrs. Edward R. Ronan, Jr.
 Mr. and Mrs. Allan H. Ross
 Mr. and Mrs. Jerry L. Rutherford
 Mr. and Mrs. Anthony Sabatino
 United Way of Saline County

Savannah High School Student Council
 Mr. and Mrs. Joel K. Schaefer
 Ms. Deloris M. Schwada
 Mr. and Mrs. Ladd Seaberg
 Sexyhairconcepts
 George J. Shaw Construction Co.
 Sheraton Kansas City Sports Complex
 Shook, Hardy & Bacon, L.L.P.
 Jerry and Marie Shreeves
 Siemens Power Generation, Inc.
 Solex Contracting, Inc.
 Sprint
 Mr. and Mrs. Jimmie T. Stark
 Supreme Cuts, LLC
 Target
 Charles H. Taylor Memorial Trust
 Dr. Cynthia Taylor
 Mr. and Mrs. Charles Tetrick
 TIGI Linea, LP
 Toshiba International Corporation
 Mr. and Mrs. Matthew A. Twyman
 Waddell & Reed Financial, Inc.
 Wagstaff & Cartmell, LLP
 Mr. and Mrs. Thomas S. Ward
 Warden Triplett Grier PA
 Mr. and Mrs. Steve J. Warta
 Wedeco, Inc.
 Dr. Brian C. Weiford and Dr. Jennifer L. Weiford
 Dr. Robert and Carolyn Weir
 Ken and Lacy West
 Mr. and Mrs. Jean-Paul Wong
 Mr. and Mrs. Jack Wylie
 Young Champions of Kansas, LLC
 Young Presidents' Organization, Kansas City Chapter

Circle of Dreams
(\$1,000 - \$2,499)
 A. J. Goss, Distributor, Inc.
 AAA Uniform & Linen Supply Company, Inc.
 Dr. Kurt A. Aarons
 Ad Trends Advertising, Inc.
 Dr. and Mrs. John M. Adams
 Adaptive Solutions Group
 The Advertising Club of Kansas City
 Mr. Nicholas Agderian
 Agri-Concerns, Inc.
 Mr. and Mrs. Russell D. Alford
 Mr. Carl E. Allen
 Almquist Sales and Brokerage
 American Legion Auxiliary Unit 153
 Mr. and Mrs. B. B. Andersen
 Mr. and Mrs. Jonathan Angrist
 Mr. Tom Annen
 Anonymous
 Mr. and Mrs. Jeffrey A. Anthony
 API Group, Inc.
 Armstrong Teasdale, LLP
 Assessment Technologies Institute, LLC
 AT&T United Way Employee Giving Campaign
 Ms. Virginia Atkinson
 Atlas Copco Comptec, LLC
 Awin Management, Inc.
 Charles W. Bachrach Trust
 Thomas R. Bailey Trust
 Balcom Law Firm, P.C.
 Bank of America United Way Campaign
 Mr. and Mrs. Clayton Barker

Baron BMW	Mr. George W. Burge	Henry Cole Enterprises, Inc.	Executive Property Marketing, Inc.	Grainger Matching Charitable Gifts Program
Bartlett and Company Grain Charitable Foundation	Mr. and Mrs. Robert Burks	Mr. and Mrs. Martin W. Cole, Jr.	Mr. and Mrs. Michael J. Falbe	Ms. Suzanne R. Gray
Ms. Marcheta M. Baxley	Dr. Dustin Burleson and Dr. Amy Burleson	Mr. and Mrs. Robert W. Collins	Mr. and Mrs. Jason M. Falley	The Greater Kansas City Sports Commission
BC National Banks	United Way of Burlington County	Colonial Presbyterian Church	Mr. and Mrs. Robert J. Feller, Jr.	Grimmway Enterprises
Mr. and Mrs. Jeffrey Beehler	Mrs. Jayne Burns	Mr. John F. Conley	Mr. and Mrs. Scott D. Ferguson	Mr. and Mrs. Kevin Grooms
Mr. and Mrs. David G. Belpedio	Mr. and Mrs. Jeffrey A. Burns	Mr. and Mrs. Keith R. Connor	Mr. and Mrs. John P. Fickel	United Way of Grundy County
Mr. and Mrs. Donald R. Bender	Mr. Jalal D. Burton	Continental Title Company	Mr. and Mrs. David Ficklin	Haake CPA, LLC
Ms. Janet L. Benson	Mr. Robert C. Burton	Country Club Bank	Mr. and Mrs. Ronald G. Fike	Mrs. Cindy J. Hager
Mr. and Mrs. David A. Bernstein	Dr. and Mrs. Merlin G. Butler	Mr. Chad I. Crawley	Financial Holding Corporation	Mr. and Mrs. Bradley C. Hakes
Mr. and Mrs. Steven A. Bernstein	Dr. and Mr. Kirby L. Buzard, D.D.S.	Cross Manufacturing, Inc.	Mr. and Mrs. Robert D. Finuf III	Mr. Timothy J. Hale
Friends and Family of Dena Kail Bigge	Dr. Steven R. Byars	CryoLife, Inc.	First National Bank	Mr. Jeff O. Hanson
Mr. John D. Bivona	C & R Transportation Inc.	Mr. and Mrs. Terry Cuffe	R. F. Fisher Electric Company, L.L.C.	Mr. James H. Harkey
Mr. and Mrs. Don C. Black	C. M. Holtzinger Fruit Co., LLC	The Louis & Dorothy Cumonow Foundation	Five Elms Equity Manager, LLC	Mr. and Mrs. Jeffrey Harmon
Ms. Grace L. Blando	C3 Capital, LLC	Mr. and Mrs. Matthew Cussigh	Mr. and Mrs. Richard J. Flanigan, Jr.	Harrah's North Kansas City Casino & Hotel
Mr. and Mrs. Roger F. Blessing, Jr.	Mr. Chris Campbell	Mr. and Mrs. Calvin V. Daniel, Sr.	Fleishman Hillard, Inc.	Mrs. Pansy M. Hartl
Blue Cross & Blue Shield of Kansas City	United Way of the Capital Area	Mr. and Mrs. Robert Darnell	Ms. Barbara M. Fleming	Mr. and Dr. Clay E. Hartman
Blue Ridge Bank and Trust Co	Car Wash Management LLC	Mr. Robert W. Davis	Mr. and Mrs. David L. Flint	Haun Potato Co.
Dr. William W. Bohn and Dr. Angela M. Noto	Cardinal Point Partners, LLC	Ms. Roberta Deitch	Mrs. Gretchen E. Florez	Mr. and Dr. George Hawkinson
Mr. and Mrs. Carl E. Bolte, Jr.	Mr. and Mrs. David Carlson	Del Monte Fresh Produce N.A., Inc.	Foremost Insurance Group	Mr. and Mrs. Thomas J. Hayes
Mr. Richard W. Bond	Ms. Kelly M. Carnago	Delta Zeta Sorority of Sigma Phi Epsilon/University Central MO	Ms. Madeline C. Francescatti	Heartland Hospitality Inc.
Boswell Family	Ms. Bridget A. Carson	Ms. Pamela A. Dennis	Mr. G. Ross Franken	Mrs. Marilyn B. Hebenstreit
Mr. and Mrs. Scott Boswell	Ms. Dorothy L. Carter	Mr. Anthony R. DiPardo	Ms. Michelle M. Frazier	Mr. and Mrs. Bryan Heitman
Mr. and Mrs. Donald L. Botts	Mr. Ellis L. Carter, Jr.	Disney Worldwide Services, Inc.	Mr. and Mrs. Stan Freimuth	Herb Thyme Farms
Mr. and Mrs. John Boushka	Cass R-IX Schools	Mr. and Mrs. Michael S. Dodd	Mr. and Mrs. Christopher S. Frey	Hickok Family Foundation
Mr. Arthur H. Bowen	Dr. and Mrs. Conan J. Castle	Mr. and Mrs. Gerald J. Donohue, Sr.	From a Father's Heart Charity Ball	Ms. Rita C. Highsmith
Ms. Beverly P. Bradley	CBIZ Benefits & Insurance Services, Inc.	Double E Builders, Inc.	Mrs. Marie D. Fulkerson	Dr. Stephen L. Hilbert and Mrs. Katherine B. Hilbert
Mr. and Mrs. Barrett Brady	The Charles Foundation	United Way of Douglas County	Mr. and Mrs. Derek W. Funk	Mr. and Mrs. Marion T. Hinken
Mr. and Mrs. Lonnie M. Breaux	Mr. and Mrs. Scott A. Chelton	Mr. and Mrs. Mark E. Dreiling	FuseMail, LLC	Hittle Technologies, Inc.
Mrs. Bette J. Brown	Mr. Jesse L. Childers	Mr. and Mrs. William T. Echerd	G & C Leasing	William and Margaret Harsh Charitable Trust Fund
Ms. Kimberly S. Brown	Mr. and Mrs. Gary A. Christianson	Mrs. Loren Edraney-Rhein	The Arthur J. Gallagher & Co.	Hogan & Hartson, LLP
Mr. Robert A. Brown	Mr. Jack L. Chronister	Mr. and Mrs. Donald R. Eidemiller	Mrs. Myron L. Garfinkle	Dr. and Mrs. George W. Holcomb III
Mr. and Mrs. Charles W. Bruce	The Chubb Corporation	Elite Surgical Systems	Mr. and Mrs. Paul H. Gault	Honeywell Matching Gifts Program
Mr. and Mrs. Chace Brundige	Dr. Stephen M. Cito	EMC Corporation	Mr. Roger C. Geary	Mr. Bruce R. Hopkins
Mr. Charles W. Bryson	Mr. and Mrs. Stephen M. Clifford	Enterprise Leasing Company	General Electric Company	Horn Aylward & Bandy, LLC
Marie E. Buck Trust	Dr. and Mrs. David J. Cobb	Epoxy Coating Specialists, Inc.	Mr. Steve Gering	
	Mr. and Mrs. Thomas L. Coen	Erected Steel Products of Alabama Inc.	Mrs. Christine Gillespie	
	Ms. Wendy B. Cogan		Mr. and Mrs. David E. Gott	

Mr. and Mrs. Walter J. Horn	Kansas City Equipment Company	Mr. and Mrs. James C. Lewien	Ms. Lesa L. Mitchell	Mr. and Mrs. Ken Paulus
Mr. John M. Hosenfeld	Kansas City University of Medicine and Biosciences	Darlene L. Lewis Estate	Mitsubishi Power Systems, Inc.	Pearl Consulting Group, LLC
Mr. and Mrs. John Houlehan		LifeNet	Mr. and Mrs. William D. Moore	Pearson Foundation
Houlihan Lokey Howard & Zukin Investment Banking Services	Kansas City Wizards	Likens & Blomquist, P.A.	Mr. and Mrs. Gregg Morris	Mrs. Susan R. Pease
Howell Construction Co., Inc.	Dr. Julius M. Kantor	Mr. and Mrs. Jon O. Long	Morrison, Webster & Carlton	Mr. and Mrs. Eric Peck
Mr. and Mrs. Donald R. Howlett	Kaw Valley Engineering, Inc.	Ms. Velda M. Lovett	Barbara J. Mueth and Steven P. Rinne	United Way of Peculiar
Husch Blackwell Sanders, LLP	KCC Corrosion Control	Mr. and Mrs. Chucker Luetje		Pentair Pump Group
Mr. Michael C. Hutton	Ms. Brenda M. Keeton	M. Bruenger & Company, Inc.	Mr. and Mrs. Michael K. Mullikin	Penton
Mr. and Mrs. Donald E. Huxtable	Keith Connell, Inc.	Mr. Arthur Malcy and Ms. Donna Kupper	Muranaka Farm, Inc.	Performance Contracting Group
Mr. and Mrs. Mickey D. Hylton	Mr. and Mrs. Don Kemna	Mr. and Mrs. Larry G. Mallin	National Starch and Chemical Foundation, Inc.	Drs. Kathy and J. Chris Perryman
IHI, Inc.	Mr. Jonathan Kemper	Mr. Marcus B. Manson and Ms. Jane H. Parsons	Nationalease of Kansas City, Inc.	Mrs. Christine K. Peterson
Mr. and Mrs. Ronald D. Innes	Mr. and Mrs. John Kempf	Mr. and Mrs. Henry I. Marder	Nations REO, Inc.	Mr. and Mrs. Kent T. Peterson
Intercall, Inc.	Dr. and Mrs. Christopher S. Kennedy	Mr. Michael Markham	Mr. and Mrs. Bjorn Naumburg	Mr. and Mrs. Kirby L. Phelps
Jagoda Family Foundation	Mrs. Deedee King	Mr. and Mrs. Scott M. Marolf	Mr. and Mrs. Justin W. Nemechek	Piat, Inc.
Steve and Gayle Jagoda and Family	Mr. and Mrs. Bruce K. Kirby	John A. Marshall Co.	Mr. and Mrs. L. Daniel Neubauer	John T. Pierson Fund
JCK Family Foundation	Kirk Agency, P.C.	John Martinez Estate	Mr. and Mrs. James Neville, Jr.	Mr. and Mrs. John T. Pierson, Jr.
Jessie's Jam	Ms. Donna Kirschner	Mr. and Mrs. Pascal Mascaux	Hai Nguyen	Mr. and Mrs. Nick L. Pizzichino
J-M Farms, Inc.	Mr. and Mrs. H. Elvin Knight, Jr.	Maya's Miracles	Nichols Company Charitable Trust	Mr. and Mrs. Arthur P. Poor, Jr.
Johanson Transportation Service	Kodiak Run	Mr. and Mrs. David Mayer	Mr. and Mrs. Kenneth Nichols	Mr. and Mrs. Randy Pope
Johnson Controls	Mr. Speros Kopitas and Mrs. Jenna Zalewski	Mr. and Mrs. Keith C. Mays	Mr. and Mrs. Michael A. Nigro	Mr. and Mrs. Derek Potts
Mr. and Mrs. Daniel C. Johnson	KPMG LLP	Mrs. Nelda J. McAdoo	North Kansas City Iron & Metal, LLC	Mr. and Mrs. Kirk R. Presley
Mr. David J. Johnson	Melvin E. Krigel	Mr. and Mrs. Thomas A. McDonnell	Mr. and Mrs. Robert D. North	Mr. Michael Price
Mr. and Mrs. Douglas B. Johnson	Mr. and Mrs. Craig P. Kuckelman	Ms. Melinda A. McKnight	Axel Novion	PSP Industries
Ms. Marian L. Johnson	Mr. and Mrs. Edward T. Kuklenski	Mrs. N. Jean Meek	Mr. and Mrs. Craig Novorr	Ms. Cynthia Pummill
Mr. and Mrs. Michael J. Johnston	Mr. and Mrs. Ben Kutler	Mr. Thomas J. Melton	The Nunes Company, Inc.	Mr. and Mrs. Joseph M. Quijas
Mr. and Mrs. Spencer A. Jones	Mr. and Mrs. Cory Lagerstrom	Mrs. Debra A. Melvin	Mr. and Mrs. C. Larkin O'Keefe	Rassmussen, Willis, Dickey & Moore, L.L.C.
Mr. and Mrs. John W. Jordan II	Lamar Companies	Mr. and Mrs. Joe Mendez	Mr. and Mrs. Dennis O'Neal	Ms. Daphne A. Reavey
JP Morgan Chase	Mr. and Mrs. Gordon Lansford	Mercer Human Resource Consulting	Mr. and Mrs. Ronald J. Ott	Reece & Nichols Realtors
Mr. Richard L. Jungck	Mr. and Mrs. Gordon Lansford III	Merck Employee Giving Campaign	Ms. Karen S. Owings	Mr. and Mrs. Bruce A. Reed
Junior League of Kansas City, Missouri, Inc.	Mr. and Mrs. Richard Lantefield	Ms. Minnie E. Miehl	Dr. Donna M. Pacicca and Mr. Dominic Decicco	Mr. Ron Reilly and Ms. Danielle L. Reilly
Kansas City Area Development Council	Mr. and Mrs. Bradley A. Lantz	Mr. and Mrs. J. B. Milbourn	Ms. Judith A. Pap	Mr. and Mrs. George E. Reinhardt
Kansas City Cancer Center	Larmer & Elstun, LLC	Miller Beer	Paradise Produce Dist, Inc.	Mr. and Mrs. William M. Reisler
Kansas City Chapter A048	Mrs. Courtney M. Laurie	Ms. Mary J. Miller	Mr. Christopher R. Paris	Mr. and Mrs. James Rens
Barbershop Harmony Society	Dr. and Mrs. Willie E. Lawrence, Jr.	Mr. and Mrs. Paul E. Miller	Mr. and Mrs. Brett Parise	Ms. Kathleen M. Ripley-Hake
Heart of America Chorus	United Way of Leavenworth County	United Way of Greater Milwaukee	Parmelee Foundation, Inc.	Mr. Brian Roberts
	Mr. and Mrs. D. Bradley Leech	Mistler Family Foundation	Dr. and Mrs. David L. Parrish	LeeAnn Robertson
	Mr. David W. Leese			Mr. and Mrs. Leonard C. Rodman



Jonathan Stepp raised \$4,400 through his coordination of a March Madness Bracketology fundraiser to benefit Child Life.

Dr. and Mrs. Victor E. Rodman, Jr.
 Mr. and Mrs. Craig L. Roeder
 Mrs. Mary A. Rohr
 Mr. and Mrs. John F. Roney
 Mr. and Mrs. Ronald Roscoe
 Blanche and Ira Rosenblum
 Foundation
 Rosetta Financial Advisors
 Mr. and Mrs. Dave G. Ruf III
 Ms. Dorothy E. Rupp
 Mr. and Mrs. Edwin J. Rush
 Mr. and Mrs. Adam Sachs
 Mr. Robert T. Salsman
 Mr. and Mrs. David F. Sargeon
 Satellite Engineering Group, Inc.
 Ms. Mary Agnes Scherman
 Mr. Henry W. Scherzer
 Mr. and Mrs. Charles L. Schorgl, Sr.
 Dr. Robert D. Schremmer
 Mr. William Schrimsher
 Mr. Michael E. Schuering

Mr. Jeff Schugart
 Mr. and Mrs. James K. Schwartz
 Mr. David M. Scott
 Mrs. Sharon K. Scott
 Mr. and Mrs. Charles S. Searle
 Mrs. Virginia C. Shackelford
 Mr. and Mrs. Larry R. Sheets
 George J. Siebers & Co., Inc.
 Siemens Westinghouse Power
 Mr. Mark R. Simpson
 Dr. and Mrs. Mark R. Sinclair
 Dr. Kevin and Dr. Molly Skelsey
 Mr. and Mrs. Kenneth W. Sloan
 Smith Transportation, Inc.
 Dr. Robert F. Smith and Dr. Susan
 M. Smith
 Mr. Terry V. Smith
 Mr. and Mrs. Gerald E. Snell
 Dr. and Mrs. John F. Sommerauer
 Mr. Jacob P. Sorg and Ms. Paula
 Sorg

Mr. and Mrs. David A. Sosinski
 Sosland Companies, Inc.
 Dr. and Mrs. Wilber B. Spalding, Jr.
 Mr. Robert A. Sprague
 Sprint Foundation
 Mr. and Mrs. Peter A. Stadler
 Dr. Merrill L. Stass-Isern
 Ms. Rebecca S. Stauffer
 Mr. and Mrs. Thomas E. Steadman
 Paul W. Steele Farms
 Ms. Georgia A. Stephens
 Mr. and Mrs. J. Daniel Stepp
 Friends and Family of Jonathan
 Stepp
 Stepstone Marketing
 Mr. and Mrs. Darrel Stewart
 Structural Steel Services, Inc.
 Mr. and Mrs. Kevin Stuckey
 Stueve Siegel Hanson, LLP
 John J. Sullivan, Jr. Foundation
 Mr. Robert B. Sullivan

Superior Lexus North
 Mr. Bruce L. Swabb
 Mr. and Mrs. Ronald D. Swopes
 Mr. and Mrs. Sven S. Sykes
 Phil Taggart
 Taylor and Fulton Packing, LLC
 Ms. Juliann Taylor
 Mr. and Mrs. Joseph N. Tecza
 Ms. Susanne R. Teel
 Mr. and Mrs. Dennis Thompson
 Trustee Management Company
 Mr. and Mrs. John E. Tyler III
 Mr. and Mrs. Brent L. Uhrmacher
 Dr. and Mrs. Johnson Underwood IV
 Union Pacific Corporation Matching
 Gifts Program
 United Steel Workers Local 1004
 Mr. and Mrs. Francis D. Uryasz
 US Bank
 Mr. and Mrs. Daniel E. Van Petten
 Vance Publishing Company
 Mr. and Mrs. Robert J. Varney
 Mr. and Mrs. Michael Varone
 VML Foundation
 Mr. and Mrs. Daniel J. Vrabac
 Wachovia Securities
 Mr. and Mrs. Brian J. Walker
 Mr. and Mrs. Mark J. Walsh
 Walton Construction Company, Inc.
 Mr. James D. Watson
 Mr. and Mrs. David J. Wenkel
 Westside Pediatric Dental
 Associates P.C., Inc.
 Ms. Paula M. Wiley
 William Jewell College Emerging
 Leaders
 Mr. and Mrs. Bret G. Wilson
 Mr. Philip E. Wilson
 Mr. William Wilson

Mr. and Mrs. John E. Wisniewski
 Mr. and Mrs. Chris J. Wood
 Mrs. Pamela J. Wood
 Mr. and Mrs. Phillip S. Woodward
 Ms. Nancy J. Woodworth
 Mr. Daniel R. Wright and Mrs. Holly
 D. Swank-Wright
 Zachry Construction Corporation
 Mr. and Mrs. Stephen M. Zanone
 Mr. Peter Zanoni
 Mr. and Mrs. Michael Zarinkia
 Mr. and Mrs. Hugh J. Zimmer
 Ms. Geraldine Zollars
\$10,000+
 Anesthesia Associates of Kansas
 City
 B. F. Ascher & Company, Inc.
 Barbie on the Runway
 Bartimus, Frickleton, Robertson &
 Gorny, P.C.
 George K. Baum Foundation
 Bernstein-Rein Advertising, Inc.
 Best Buy Stores
 Black & Veatch Corporation
 The H&R Block Foundation
 Burns & McDonnell Engineering
 Capitol Federal Foundation
 Carter Acquisitions LLC
 Carthage Area United Way
 Children's Mercy Cancer Center
 Children's Mercy Century Club
 Children's Relief Association
 Children's Miracle Network
 Chip It For Children Golf Classic
 Chipotle Mexican Grill
 Commerce Bank of Kansas City,
 N.A.

Circles of Giving

Buelah & Tim Crummett
 Charitable Fund
 DST Systems, Inc.
 J. E. Dunn Construction Group, Inc.
 Farmers' Electric's Area Youth
 Benefit Fund, Inc.
 First Downs for Down Syndrome,
 Inc.
 FMC
 Fraternal Order of Eagles Aerie
 3770
 Friends of Children's Mercy
 Alice Berry Graham Associates
 Hallmark Corporate Foundation
 Hands & Hearts for Children
 Harp and Shamrock - The Bob
 Reeder Fan Club, Inc.
 Health Care Foundation of Greater
 Kansas City
 William Randolph Hearst
 Foundation
 United Way of Greater Kansas City
 Heartland Combined Federal
 Campaign
 Hope on Wheels Hyundai Dealers
 Kansas City Regional Association
 of Realtors
 Kansas City Southern
 Kaolin Mushroom Farms, Inc.
 David Woods Kemper Memorial
 Foundation
 Kohl's Department Stores
 Lathrop & Gage, L.C.
 Lewis Rice & Fingersh, L.C.
 Nevada P. Linscomb Fund
 M & I Bank Foundation
 Marion Merrell Dow Donor
 Advisory Fund
 Maywood Mercy Hospital Club



FMC presented a check from the proceeds of their annual bowling tournament to the Eating Disorders Clinic.

McCreery & Yancy Trust
 McNeil Fruit & Vegetable L.L.C.
 Mechanical Contractors
 Association of Kansas City
 Mennonite Church
 MHC Truck Leasing, Inc.
 The Missouri Gaming Company
 United Community Fund of Neosho
 Area
 United Way of New York
 Northland Health Care Access
 Dominic L. Passantino Memorial
 Golf Tournament
 Plant Hope for Hearts
 Harry Portman Charitable Trust

Will Rogers Motion Picture
 Pioneers Foundation
 Scottish Rite Childhood Language
 Disorders Clinic
 Sedalia-Pettis County United Way
 Kenneth L. and Eva S. Smith
 Foundation
 Ralph L. Smith Foundation
 United Way of Southwest Missouri
 Victor E. Speas Foundation
 Sprint Corporation
 United Way of Greater St. Joseph,
 Inc.
 Elaine Feld Stern Charitable Trust
 Stouse, Inc.
 Survivor Ride

Ten Ten Foundation
 C. W. Titus Foundation
 Earl & Elizabeth Toutz Charitable
 Trust
 Toyota Motor Sales, U.S.A., Inc. KC
 Regional Office
 Treat America, LTD
 Truman Medical Center Charitable
 Foundation
 The Courtney S. Turner Charitable
 Trust
 Benjamin Twyman Memorial Golf
 Tournament
 UPS Foundation, Inc.
 Thomas S. Watson Family
 Foundation-Country Classic
 United Way of Wyandotte County,
 Inc.
 Wyandotte Health Foundation

Adrienne Adam
 Mr. and Mrs. Charles T. Adams
 Mrs. Nina M. Alexander
 Kate and Josh Allen
 Mr. Fred E. Angle
 Anonymous
 Sue Ellen Balzer
 Mr. and Mrs. James Bartimus
 Anna Beldner
 William F. Bell, MD
 Marilyn Moore Benson
 Mr. and Mrs. Bradley A. Bergman
 Mr. and Mrs. Charles J. Berkel
 Ruth and Alfred Biggs, MD
 Mr. and Mrs. James F. Blair
 Leon E. Bloch, Jr.
 Mary Shaw Branton
 Esther J. Bronson

Mr. and Mrs. Carl Chinnery
 Mr. Jack W. Coffey
 Helen M. Cox
 Karen S. Cox RN, PhD
 Richard B. and Laura S. Cray
 William A. Dann
 John C. and Jane Reusser Davis
 Ian Drake
 Mr. Robert W. Drury III
 Mrs. Jean E. Dunlap
 Terry and Peggy Dunn
 Mr. and Mrs. William H. Dunn, Sr.
 Alan Edelman and Deborah
 Sosland-Edelman
 Ms. Mary Feno
 Betsey S. Fletcher
 Hazel Flowers
 Dr. Fred D. Fowler
 Mr. Richard Frontman
 Paul and Sandra Gale
 Mr. and Mrs. Myron L. Garfinkle
 Mr. and Mrs. Joseph R. Gilman, Jr.
 Christine and James Glenski
 Mr. and Mrs. Frederick M.
 Goodwin, Jr.
 Linda S. Goodwin
 Dr. and Mrs. Rengasamy
 Gowdamarajan
 Bill and Mary Grant
 Lewis and Laura Gregory
 Mr. and Mrs. Donald J. Hall
 Dr. and Mrs. Robert T. Hall
 Melvin and Frances Hall
 E. J. Hanson, MD
 Mr. Lloyd Harris
 Amy Hart
 Mrs. Orval L. Haynes
 Mr. and Mrs. Paul H. Henson
 Dr. and Mrs. Scott Herre

Mr. and Mrs. Thomas M. Higgins III
 W. J. Hiltbrunner
 Chuck and Ellen Hoffman
 Dr. and Mrs. George W. Holcomb III
 Dr. and Mrs. Thomas M. Holder
 Marvin C. Hopper
 Dr. Gerald E. and Dorothy Housh
 Mr. and Mrs. Thomas H. Howell
 Dr. and Mrs. Marius M. Hubbell, Jr.
 Mr. and Mrs. David H. Hughes
 Dr. and Mrs. John D. Hunkeler
 Judy and Graham Hunt
 Albert E. and Vita B. Hylton
 Robert F. Jackson, Jr. and Frances
 L. Jackson
 Mr. Ralph C. Johnson
 Don Kahan
 Dr. Julius Kantor
 Dr. and Mrs. Ralph E. Kauffman
 Ms. Marie Kellogg
 Dr. and Mrs. Howard W. Kilbride
 David and Terrie Kincade
 Judi and Elvin Knight
 Dr. Prakash Kulkarni
 Mr. and Mrs. Joe H. Lambert
 Jane Lampo and Rick Welsch
 William Earl Lentz
 Mr. and Mrs. Robert A. Long
 Fred and Dee Lyons
 Mrs. Ann G. Mahurin
 Ann G. and Jack L. Mahurin
 Mr. and Mrs. Alan R. Marsh
 Ms. Oleta B. Maurer
 Laura McKnight and Clay Barker
 Ms. Michelle A. McMillan
 Mary Ann Meeks
 The Harold and Marilyn Melcher
 Foundation
 Jan and Frank Miller

Jo Stueve, Judy Hunt, Graham Hunt and Jane Lampo attended the 2008 CEO Reception held at the Carriage Club.



Robert R. Moore
 Dr. Ray and Lois
 Morrison
 Barbara J. Mueth and Steven P.
 Rinne
 Mr. and Mrs. James B. Nutter, Sr.
 Dr. and Mrs. Randall L. O'Donnell
 David Oliver and Mary Gresham
 Lloyd C. Olson, MD
 Robin L. Onikul, DDS
 Delma A. Parks
 Jay M. Portnoy, MD
 The Dean and Jennifer Postel
 Family
 Mr. and Mrs. William Putnam, Jr.
 Ms. Barbara Quinn
 John E. Roberts
 Mrs. Margaret Rounds
 Mrs. Gerean Rudnick
 Robin Rusconi and Jae McKeown
 Mr. and Mrs. Michael A. Schultz
 Mr. and Mrs. Thomas M. Scott
 Dr. and Mrs. Ronald J. Sharp
 Mr. and Mrs. Michael E. Shepard
 and Family
 Lester Siegel, Jr.
 Charlotte Simonson

Ralph Soule Irrevocable Annuity
 Trust
 Mrs. Malinda Stern
 Paul E. and Virginia K. Stewart
 John and Jo Stueve
 Elizabeth Weekley Sutton
 Bud and Lois Taber
 Bud and Connie Taylor
 Mr. Robert N. Taylor
 Mr. Norman M. Tempel
 Davoren and Bill Tempel
 Mr. and Mrs. Edwin H.L. Thompson II
 Kaleen Tiber
 Dr. William E. Tuog III and Dr. Jill D.
 Jacobson
 Joanne M. Vandervort
 Dr. Gary S. Wasserman
 Maurice A. Watson
 Mr. and Mrs. Gordon E. Wells, Sr.
 Hazel Barton Wells
 Ms. Sally L. Wells
 David H. Westbrook
 Mr. and Mrs. Daniel J. Williams
 Tod and Madelyn Wilson Family
 Mr. and Mrs. Gardner Wright
 Amy Wurst



Mary Hunkeler, Chair of the Hospital's Board of Directors in 2008 and her husband, Dr. John Hunkeler.

James M. Burcalow
 Ooch and Elsie Cantrell

Foundations

American Century Companies Foundation
 Anonymous
 Bartlett and Company Grain Charitable Foundation
 George K. Baum Foundation
 The H&R Block Foundation
 Marie E. Buck Trust
 Capitol Federal Foundation
 Catholic Foundation
 The Charles Foundation
 Coleman Family Foundation, Inc.
 Erdene Corley Advised Fund
 Cross Foundation, Inc.
 Buelah & Tim Crummett Charitable Fund
 The Louis & Dorothy Cumonow Foundation
 Elmer Dalke Charitable Foundation
 Gary Dickinson Family Charitable Foundation
 Enright Foundation, Inc.
 Mary Elizabeth Ewing Foundation, Inc.
 Doug and Caryn Firebaugh Foundation
 First Downs for Down Syndrome, Inc.
 Mabel and Joseph Friedman Charitable Trust
 Jack Goldstein Charitable Trust
 The Goppert Foundation
 Arvin Gottlieb Charitable Foundation
 Hallmark Corporate Foundation
 Hamilton Roddis Foundation
 William and Margaret Harsh Charitable Trust Fund

Health Care Foundation of Greater Kansas City
 William Randolph Hearst Foundation
 Hickok Family Foundation
 Hoffman Family Foundation
 M.R. and Evelyn Hudson Foundation
 Jackson M. Hutt Memorial Fund
 J.J.C.T.M. Foundation
 Jagoda Family Foundation
 JCK Family Foundation
 Ewing Marion Kauffman Foundation Matching Gifts Program
 Muriel McBrien Kauffman Foundation
 David Woods Kemper Memorial Foundation
 Kirk Foundation
 Kirkland & Ellis Foundation
 Nevada P. Linscomb Fund
 Dee and Fred Lyons Foundation
 M & I Bank Foundation
 Marion Merrell Dow Donor Advisory Fund
 The Lordi Marker Family Foundation
 McCray Charitable Foundation
 Ms. Molly A. McGee
 Catherine V. Merrill Foundation
 Mistler Family Foundation
 Morgan Family Foundation
 Northland Health Care Access
 Oppenheimer Brothers Foundation
 Parmelee Foundation, Inc.
 Pearson Foundation
 John T. Pierson Fund

Norman & Elaine Polsky Family Supporting Foundation
 Harry Portman Charitable Trust
 Marvin S. Robinson Charitable Trust
 The Roetheli Lil' Red Foundation

Jack and Martha Steadman Family Foundation
 Elaine Feld Stern Charitable Trust
 John J. Sullivan, Jr. Foundation
 Charles H. Taylor Memorial Trust
 Ten Ten Foundation



Will Rogers Motion Picture Pioneers Foundation
 Blanche and Ira Rosenblum Foundation
 Sarli Family Foundation
 Tommy Simone Memorial Scholarship Fund
 Kenneth L. and Eva S. Smith Foundation
 Ralph L. Smith Foundation
 The Sosland Foundation
 Victor E. Speas Foundation
 Sprint Foundation

C. W. Titus Foundation
 Earl & Elizabeth Toutz Charitable Trust
 Truman Medical Center Charitable Foundation
 The Courtney S. Turner Charitable Trust
 UPS Foundation, Inc.
 VML Foundation
 Weber Family Foundation
 Westlake Foundation Fund
 Wyandotte Health Foundation

The Thomas S. Watson Foundation made a gift to Children's Mercy Cardiac Surgery Research. Brad Leech, left, and Dr. Fred Burry, right, accepted the check from Tom and Hillary Watson, who hosted a benefit gala for Children's Mercy at their home.

Anonymous
 Charles W. Bachrach Trust
 Thomas R. Bailey Trust
 Myrtle K. Bales Estate
 Homer L. Bartling Irrevocable Trust
 Janice N. and Herman G. Bartz, Jr.
 Charitable Trust
 Hulda C. Bass Revocable Trust
 Francis M. Bernardin Trust
 Zara Boals Estate
 Gracia G. Bremer Charitable
 Foundation
 Mrs. Saurine L. Brown
 Dorothy D. Burdin Estate
 Jessie J. Burroway Charitable Fund
 Mr. Merle Chaney and Ms. Ruby
 Lee Chaney Trust
 George W. Crum Irrevocable Trust
 Allen L. Cunningham Unitrust
 Harry Darby Trust
 Minnie S. Denslow Trust
 Earl J. Deubach Trust
 Rita M. and Earl E. Dickmeyer Trust
 David Earhart Mercy Fund
 Juliette M. Eliscu Trust
 Paul Elliott Estate
 L. Blanche Engelman Trust
 Charlotte Thomas Faeth Charitable
 Remainder Unitrust
 Essie L. Glasscock Revocable Trust
 Lois Golden Revocable Living Trust
 Robert and LaVerne Griner Trust
 Minerva Gundelfinger Trust
 Mildred B. Hall Revocable Trust
 Cleda Hanneman Irrevocable Trust
 Frances Havens Trust
 Elizabeth A. Hull Trust
 Anna Elno Irving Trust
 Ada H. and Louise A. Jaccard Trust

Walter Jaccard Trust
 Fern P. Jameson Charitable Trust
 Dorothy L. Jeffrey Trust
 Mary Caroline Jordan Estate
 Robert B. Kahn Trust
 Alta Mae Knoop Irrevocable Trust
 Estate of Charles H. Koslowsky
 James Bell Lapsley Trust
 Estate of Bernice V. Lenhart
 Darlene L. Lewis Estate
 J.T. and Dorothy Linville Revocable
 Living Trust
 J. Newton and Cora K. Mabry
 Estate
 Marjorie Martin Trust
 Gladys R. McCall Estate
 McCreery and Yancy Trust
 Albert J. Mehl Trust
 James Neal Miller Trust
 Paul H. Miller By-Pass Trust
 Lena A. Nielsen Estate
 Alma Louise Parsons Estate
 Gladys Rickard Charitable Trust
 Dorothy D. Riley Estate
 Susie M. Root Charitable Trust
 Pansy A. Seitz Trust
 Edward F. Shortall Revocable Trust
 Clara L. Shumway Charitable Trust
 George Sombart Trust
 Iva G. Strohm Intervivos Trust
 Earl and Martha Wieland Trust
 Estate of Marie F. Wood

Corporations

A & A Express, Inc.
 A & C Investments Inc., LLC
 A. J. Goss, Distributor, Inc.
 AAA Uniform & Linen Supply Company, Inc.
 AAS Cleaning Systems, LLC
 The Active Network
 Ad Trends Advertising, Inc.
 Adams Automotive Group, Inc.
 Adaptive Solutions Group
 The Advertising Club of Kansas City
 Aerotek
 Afco Steel
 AFLAC, Inc.
 Agri-Concerns, Inc.
 Allied NA Ins Brokerage of Missouri, LLC
 Almquist Sales and Brokerage
 Alstom Power, Inc.
 AMC Theatres

Anonymous
 APi Group, Inc.
 Armstrong Teasdale, LLP
 B. F. Ascher & Company, Inc.
 Assessment Technologies Institute, LLC
 Atlas Copco Comptec, LLC
 Awin Management, Inc.
 Balcom Law Firm, P.C.
 Bank of Kansas City, N.A.
 Bank of Kansas City
 Baron BMW
 Bartimus, Frickleton, Robertson & Gorny, P.C.
 George K. Baum & Company
 BC National Banks
 Berkel & Company Contractors, Inc.
 Bernstein-Rein Advertising, Inc.
 Best Buy Stores
 Black & Veatch Corporation
 Blish-Mize Co.
 Blue Cross & Blue Shield of Kansas City
 Blue Ridge Bank and Trust Co
 BMO Capital Market
 Boston Financial Data Services
 Bowen Engineering Corporation
 Breakthrough Marketing & Design & Technology, Inc.
 Bryan Cave, LLP
 The Bukaty Agency
 Bunzl Mid Central Region
 Burns & McDonnell Engineering
 C & R Transportation Inc.
 C. H. Robinson Company
 C. M. Holtzinger Fruit Co., LLC
 C3 Capital, LLC
 Calavo Growers, Inc.

Calixtro Distributing Company, Inc.
 Callahan Transportation, Inc.
 Bob D. Campbell and Company, Inc.
 Capital Electric Construction Company, Inc.
 Cardinal Point Partners, LLC
 Carter Acquisitions, LLC
 CBIZ Benefits & Insurance Services, Inc.
 Cereal Food Processors, Inc.
 Chelan Fresh Marketing
 Chipotle Mexican Grill
 Christenberry Collet & Company, Inc.
 Chrysler Financial
 The Chubb Corporation
 Church Brothers, LLC
 Henry Cole Enterprises, Inc.
 C. J. Coleman and Company, LTD
 Commerce Bank of Kansas City, N.A.
 Connecticut General Life Insurance Company
 Keith Connell, Inc.
 Continental Title Company
 Contract Furnishings, Inc.
 Country Club Bank
 Crandall & Company, LLC
 Cross Manufacturing, Inc.
 CryoLife, Inc.
 Del Monte Fresh Produce N.A., Inc.
 Delta Dental
 Disney Worldwide Services, Inc.
 Document Management Solutions, LLC
 Double E Builders, Inc.
 DST Systems, Inc.
 J. E. Dunn Construction Group, Inc.

Eddie's Lounge
 EDS
 Elite Surgical Systems
 EMC Corporation
 Emerson Electric Co.
 Enterprise Leasing Company
 Epoxy Coating Specialists, Inc.
 Erected Steel Products of Alabama Inc.
 Evans/Evco Company
 Evan-Talan Homes, Inc.
 eVergance
 Executive Property Marketing, Inc.
 Experitec, Inc.
 F.G.F. Company
 Farmers' Electric's Area Youth Benefit Fund, Inc.
 Financial Holding Corporation
 First National Bank
 R. F. Fisher Electric Company, L.L.C.
 Five Elms Equity Manager, LLC
 Fleishman Hillard, Inc.
 FMC
 Foremost Insurance Group
 FuseMail, LLC
 G & C Leasing
 The Arthur J. Gallagher & Co.
 General Electric Company

Grainger
 Grimmway Enterprises
 Haake CPA, LLC
 Hallmark Cards, Inc.
 Hanson
 Harrah's North Kansas City Casino & Hotel
 Haun Potato Co.
 Hayes Drilling, Inc.
 Hays Companies
 Heartland Hospitality Inc.
 Herb Thyme Farms
 Highwoods Properties
 Hittle Technologies, Inc.
 Hogan & Hartson, LLP
 Honeywell Matching Gifts Program
 Horn Aylward & Bandy, LLC
 Houlihan Lokey Howard & Zukin Investment Banking Services
 Howell Construction Co., Inc.
 Husch Blackwell Sanders, LLP
 I. Kruger, Inc.
 IHI, Inc.
 Intercall, Inc.
 Raymond James and Associates, Inc.
 Jayhawk Capital Management
 Jenkins and LeBlanc, PA
 Jessie's Jam



More than 600 bike helmets were given away at the annual Kohl's Bike Smart event, a part of the Kohl's and Children's Mercy Healthy Kids University.

American International Group Inc.
 Andrews McMeel Universal
 Foundation
 Anesthesia Associates of Kansas City

Representatives from Best Buy presented proceeds from their golf tournament.





Sullivan's hosted a phenomenal evening for friends of Children's Mercy and our Hands & Hearts Board. The evening was tremendously entertaining, fun-filled and noteworthy as they provided a gift of \$10,000 for our Cardiac Surgery and Research Department. Guests, Chamber delegates and Children's Mercy officials welcomed Sullivan's and its General Manager, Sherry Joseph, to the Leawood community.

JLT Park, LTD
 J-M Farms, Inc.
 Johanson Transportation Service
 Johnson Controls
 JP Morgan Chase
 Kansas City Cancer Center
 Kansas City Equipment Company
 Kansas City Southern
 Kansas City Wizards
 Kaolin Mushroom Farms, Inc.
 Kaw Valley Engineering, Inc.
 KCC Corrosion Control
 Kiewit Power Constructors Co.
 Kirk Agency, P.C.
 Kohl's Department Stores
 KPMG, LLP
 Lamar Companies

Tom Lange Co., Inc.
 Larmer & Elstun, LLC
 Lathrop & Gage, L.C.
 Lewis Rice & Fingersh, L.C.
 Likens & Blomquist, P.A.
 The Lockton Family
 Lytle Construction, Inc.
 M. Bruenger & Company, Inc.
 Mallin Brothers Company, Inc.
 John A. Marshall Co.
 Matrix
 Matthews Leasing, LLC
 McCarthy Auto Group
 MCL Distributing, Inc.
 McNeil Fruit & Vegetable L.L.C.
 Mechanical Contractors
 Association of Kansas City

Mercer Human Resource
 Consulting
 Merrill Iron & Steel, Inc.
 MHC Truck Leasing, Inc.
 Microsoft Giving Campaign
 Midland Loan Services
 Miller Beer
 The Missouri Gaming Company
 Mitsubishi Power Systems, Inc.
 Morrison, Webster & Carlton
 Muranaka Farm, Inc.
 National Starch and Chemical
 Foundation, Inc.
 Nationalease of Kansas City, Inc.
 Nations REO, Inc.
 NatWest
 NCM Associates, Inc.

Nelson Reproductive Services
 Nichols Company Charitable Trust
 Nordstrom
 North Kansas City Iron & Metal,
 LLC
 The Nunes Company, Inc.
 Olympic Transportation Services,
 Inc.
 Paradise Produce Dist, Inc.
 Paragon Capital Management, LLC
 Pearl Consulting Group, LLC
 Pentair Pump Group
 Penton
 Pepsi Americas
 Performance Contracting Group
 Piat, Inc.
 Polsinelli Shughart
 The Private Bank
 PSP Industries
 Rassmussen, Willis, Dickey &
 Moore, L.L.C.
 Redkin
 Reece & Nichols Realtors
 Reynolds, Inc.
 River Ranch Fresh Foods, LLC
 Roberts & Schaefer Company
 Rosetta Financial Advisors
 Satellite Engineering Group, Inc.
 Sexyhairconcepts
 George J. Shaw Construction Co.
 Sheraton Kansas City Sports
 Complex
 Shook, Hardy & Bacon, L.L.P.
 George J. Siebers & Co., Inc.
 Siemens Power Generation, Inc.
 Siemens Westinghouse Power
 Smith Transportation, Inc.
 Solex Contracting, Inc.
 Sosland Companies, Inc.

Sprint Corporation
 Paul W. Steele Farms
 Stepstone Marketing
 Stouse, Inc.
 Structural Steel Services, Inc.
 Stueve Siegel Hanson, LLP
 Sullivan's
 Superior Lexus North
 Supreme Cuts, LLC
 Target
 Taylor and Fulton Packing, LLC
 TC Transport, Inc.
 TIGI Linea, LP
 Toshiba International Corporation
 Toyota Motor Sales, U.S.A., Inc.
 Kansas City Regional Office
 Tradebot Systems, Inc.
 Treat America, LTD
 Trustee Management Company
 Union Pacific Corporation
 Matching Gifts Program
 US Bank
 Vance Publishing Company
 Wachovia Securities
 Waddell & Reed Financial, Inc.
 Wagstaff & Cartmell, LLP
 Walton Construction Company,
 Inc.
 Warden Triplett Grier PA
 Wedeco, Inc.
 Westside Pediatric Dental
 Associates P.C., Inc.
 Wulfsberg Reese Colvig &
 Firstman
 Young Champions of Kansas, LLC
 Zachry Construction Corporation
 Zurich American Insurance
 Company

\$1 Million and Above

Anonymous
 Mr. and Mrs. Donald J. Hall
 Hallmark Corporate Foundation
 David Woods Kemper Memorial
 Foundation

\$500,000 - 999,999

Mrs. Barbara H. Marshall
 Truman Medical Center Charitable
 Foundation

\$100,000 - 499,999

Anonymous
 Bartimus, Frickleton, Robertson &
 Gorny, P.C.
 Homer L. Bartling Irrevocable Trust
 Black & Veatch Corporation
 Capitol Federal Foundation
 Children's Miracle Network
 Mr. and Mrs. Thornton Cooke II
 Allen L. Cunningham Unitrust
 Rita M. and Earl E. Dickmeyer Trust
 J. E. Dunn Construction Group, Inc.
 The Goppert Foundation
 Mr. and Mrs. David E. Hall
 Mr. and Mrs. Donald J. Hall, Jr.
 Health Care Foundation of Greater
 Kansas City
 William Randolph Hearst
 Foundation
 United Way of Greater Kansas City
 Elizabeth A. Hull Trust
 Walter Jaccard Trust
 Demi Lloyd Kiersznowski and
 David Kiersznowski
 Kohl's Department Stores
 Marion Merrell Dow Donor
 Advisory Fund



Adele and Donald J. Hall

Morgan Family Foundation
 Mr. and Mrs. W. Keith Pence
 Will Rogers Motion Picture
 Pioneers Foundation
 Mr. and Mrs. Charles W.
 Schellhorn
 Pansy A. Seitz Trust
 Elaine Feld Stern Charitable Trust
 Iva G. Strohm Intervivos Trust
 Thomas S. Watson Family
 Foundation-Country Classic
 Earl and Martha Wieland Trust
 Wyandotte Health Foundation

\$50,000 - 99,999

Anonymous
 William A. Dann
 Jack Goldstein Charitable Trust
 Minerva Gundelfinger Trust
 Heartland Combined Federal
 Campaign
 Anna Elno Irving Trust
 Lena A. Nielsen Estate
 Marvin S. Robinson Charitable
 Trust

Scottish Rite Childhood Language
 Disorders Clinic
 Victor E. Speas Foundation
 United Way of Greater St. Joseph,
 Inc.
 C. W. Titus Foundation

\$25,000 - 49,999

Mr. and Mrs. C. Floyd Anderson
 Anonymous
 Barbie on the Runway
 Mr. Kevin G. Barth
 Mr. and Mrs. Bryan J. Beaver
 Francis M. Bernardin Trust
 Mrs. Saurine Brown
 Dorothy D. Burdin Estate
 Children's Mercy Century Club
 Cross Foundation, Inc.
 Mr. and Mrs. Robert R. Cross
 Mary Ellen Daly
 L. Blanche Engelman Trust
 Enright Foundation, Inc.
 First Downs for Down Syndrome,
 Inc.

Mabel and Joseph Friedman
 Charitable Trust
 Hope on Wheels Hyundai Dealers
 M.R. and Evelyn Hudson
 Foundation
 Jackson M. Hutt Memorial Fund
 Mary Caroline Jordan Estate
 Kaolin Mushroom Farms, Inc.
 Kirk Foundation
 James Bell Lapsley Trust
 The Lordi Marker Family
 Foundation
 Dennis and Susan Lordi Marker
 Gladys R. McCall Estate
 Mr. and Mrs. Harry C. McCray, Jr.
 McCreery & Yancy Trust
 James Neal Miller Trust
 Plant Hope for Hearts
 Mr. and Mrs. Fred H. Pryor
 Dorothy D. Riley Estate
 Sarli Family Foundation
 Edward F. Shortall Revocable Trust
 Clara L. Shumway Charitable Trust
 UPS Foundation, Inc.
 Estate of Marie F. Wood

\$10,000 - 24,999

Mr. and Mrs. John D. Anglin
 Anonymous
 Mrs. Lucille Armacost
 Mr. Andrew Atterbury and Ms.
 Gwyn Prentice
 Myrtle K. Bales Estate
 Mrs. Joyce D. Batterson
 George K. Baum Foundation
 Mr. and Mrs. David B. Bennett
 Bernstein-Rein Advertising, Inc.
 Best Buy Stores
 Mrs. Mary S. Branton

The Bukaty Agency
 Burns & McDonnell Engineering
 Dr. and Mrs. V. Frederick Burry, Jr.
 Carter Acquisitions, LLC
 Carthage Area United Way
 Chipotle Mexican Grill
 Commerce Bank of Kansas City,
 N.A.
 Karen Cox, RN, PhD
 Buelah & Tim Crummett
 Charitable Fund
 Dr. and Mrs. William B. Daniels
 Earl J. Deubach Trust
 Gary Dickinson Family Charitable
 Foundation
 Bill and Rachel Drake
 DST Systems, Inc.
 Mr. Kevin A. Dunn
 Mr. and Mrs. William H. Dunn, Sr.
 Jerry and Rayla Erding
 Farmers' Electric's Area Youth
 Benefit Fund, Inc.
 Foreclosure Management
 Company
 Fraternal Order of Eagles Aerie
 3770
 Friends of Children's Mercy
 Mr. and Mrs. Richard I. Galamba
 Mr. and Mrs. David L. Goebel
 Mildred B. Hall Revocable Trust
 Hamilton Roddis Foundation
 Cleda Hanneman Irrevocable Trust
 Harp and Shamrock - The Bob
 Reeder Fan Club
 Mr. and Mrs. Michael J. Hayes
 Hoffman Family Foundation
 Amy and Paul Holeywinski
 Elizabeth Goddard, PhD and
 Gregory W. Hornig, MD

Judy and Graham Hunt
 Mr. and Mrs. Charles H. Hunter
 J.J.C.T.M. Foundation
 Ada H. & Louise A. Jaccard Trust
 Fern P. Jameson Charitable Trust
 Dorothy L. Jeffrey Trust
 David and Sandy Johnson

Dr. and Mrs. Howard W. Kilbride
 Mr. and Mrs. Thomas P. Klein
 Estate of Charles H. Koslowsky
 William and Rebecca Krueger
 Lewis Rice & Fingersh, L.C.
 Nevada P. Linscomb Fund
 The Lockton Family

Mechanical Contractors
 Association of Kansas City
 Mennonite Church
 Mr. and Mrs. Michael A. Merriman
 MHC Truck Leasing, Inc.
 The Missouri Gaming Company
 Mr. and Mrs. John H. Mize, Jr.

Northland Health Care Access
 Mr. and Mrs. James B. Nutter, Sr.
 Drs. James and Lina O'Brien
 Dr. and Mrs. Randall L. O'Donnell
 Oppenheimer Brothers Foundation
 Dr. and Mrs. Daniel J. Ostlie
 Alma Louise Parsons Estate
 Dominic L. Passantino Memorial
 Golf Tournament
 Mr. and Mrs. Jon G. Piebenga
 Harry Portman Charitable Trust
 Gladys Rickard Charitable Trust
 Mrs. Loretta D. Riss
 Cristy and Charlie Roberts
 Ginzy Schaefer Music Therapy
 Fund
 Mr. and Mrs. Thomas M. Scott
 Sedalia-Pettis County United Way
 George J. Shaw Construction
 Ralph L. Smith Foundation
 Mr. and Mrs. Stephen S. Soden
 United Way of Southwest Missouri
 Sprint Corporation
 Mr. and Mrs. Jack W. Steadman
 Jack and Martha Steadman Family
 Foundation
 Mr. Paul E. Stewart
 Stouse, Inc.
 John and Jo Stueve
 Rose Sarli Teicher Trust
 Ten Ten Foundation
 Mrs. Mariel T. Thompson
 Earl & Elizabeth Toutz Charitable
 Trust
 Toyota Motor Sales, U.S.A., Inc. KC
 Regional Office
 Treat America, LTD
 Mr. and Mrs. Keith T. Walker
 Mr. and Mrs. Robert F. Walker

Mrs. Adelaide C. Ward
 Mr. and Mrs. Thomas S. Watson
 Weber Family Foundation
 Mr. and Mrs. A. Keith Weber
 Ms. Melinda Wehrle
 Westlake Foundation Fund
 Mr. and Mrs. Scott M. Westlake
 Mrs. Sally K. Wood
 United Way of Wyandotte County,
 Inc.
 Mr. and Mrs. William E. Young
 Dr. and Mrs. David L. Zwick



14th Annual Bill Mounkes Golf Outing
 Golfers and friends gathered at Sunflower Hills Golf Course in memory of Bill Mounkes and over \$8,000 was raised to purchase a portable AV system for Child Life.

Kansas City Regional Association
 of Realtors
 Kansas City Southern
 Muriel McBrien Kauffman
 Foundation
 Mr. and Mrs. Thomas L. Keaveny II
 Mr. and Mrs. Whitney E. Kerr, Jr.

Angie and Chris Long
 Dee and Fred Lyons Foundation
 Mr. and Mrs. Henry J. Massman IV
 Ms. Peggy R. Massman
 Maywood Mercy Hospital Club
 McCray Charitable Foundation
 McNeil Fruit & Vegetable L.L.C.

Drs. Brett H. and Cynthia A.
 Mueller
 Dr. J. Patrick and Jane Murphy
 United Community Fund of Neosho
 Area
 Mr. and Mrs. Henry H. Newell
 United Way of New York

3M	Annedore's Fine Chocolates	Mr. and Mrs. Don Bender	Marjorie Botteron	Ed Calton
4-H	Anonymous	Jennifer Benefield	Pasco M Bowman	Calvary Lutheran Preschool
418th Civil Affairs Battalion	Anton Brammer	Gary Bennett, Jr.	Boy Scout Troop #84	Cecilia Calvert
A Woman's Touch	Ladies of the Atriums	John Bennett	Boy Scout Troop #145	Tyler Campbell c/o Laura
Ace of Hearts, BBQ Specialties, LLC	Cat Antwine	Brodie Bensch	Boy Scout Troop #216	Campbell
Patience Acosta	Arbor Creek Elementary	Bob and Jane Benton	Boy Scout Troop #180	Laura Campbell, c/o Laura and
John Adams	Ascension Catholic School	Eric and Sandy Benton	Boy Scouts of America	Oscar Campbell
Sue Adams	Aspect Foundation	Beringer Wine Estates	Linda S. Boyd	Cancer Action Center Sewing
Adkore	Assistance League of KC	Berman and Rabi, PA	Boys & Girls Club	Circle
Aeropostale	Assurance Employee Benefits	Dr. Phylliss Bernstein and Mr.	Bracy and Ross Associates	Mary Margaret Capen
Aetna Insurance	Mr. and Mrs. Ward Attebery	Robert Bernstein and Family	Sheda Bradshaw	Capital Grille
Aflac	Christie Auchterlonie	Family of Blake Bertie	Miss Emma Brammer	Capital Electric
Maureen Aiken	Marie Auffert	Jennifer Bertrand	Miss Lucia Brammer	Carey of Kansas City
AJILON	Auto Finance Center of Kansas City Inc	Best Buy	Shawn and David Brammer	Carlton Company/ Chromelox
Lowry and Logan Alcaraz	Avignon Apartments	Bethany Lutheran Ladies	Break Pointe Community Church	Carrabba's Italian Restaurant
Janet Alhom	Monique Aviles	Bethel Neighborhood Center	Mary Bridge	Mia Carroll
Gracie Allen	Huma Baig	Bethesda Faith Village	The Bristol	Teri Cartwright
Alpha Lambda Delta	Kevin Bailey	Margie Bextermueller	Elder Harry E. Brown	Josephine Carver
Alpha Zeta Cha.- Beta Sigma Phi	Kim Baker	Birch Communications	Teresa Brown	Kerry Casper
Scott Altman, c/o Ron and Julie Altman	Banana Republic	Black & Veatch	Brownie Troop #94	Cass Midway R-1 Elementary
AMC Entertainment	Bank of America	Henry T. Thomas Blasi	Brownie Troop #1498	Dona Casto
American Legion Auxiliary Post #21	Alyssa Barbour	Jennifer Blecha	Jill Brungardt	Arnold and Carol Caviar
American Baptist Church	Olivia Barbour	Brenda Bledsoe	Bubbie's Bundles	Clay Center Community Middle School--"Friends of Rachel"
American Sewing Guild	Joseph Barker	Bledsoe's Rental Inc.	Charity Buehler	CCE Elementary
American Sewing Guild, KC Chapter	Letha Weldon Barnthouse	H & R Block	Karen Burchardt	Jennifer Cecena
AmerisourceBergen Corporation	Kim and Jam Barrington	Sandy Blouin	Katrina Burger	Camille Cerewing
AmerisourceBengen Drug Corporation	Lucas Barta c/o Kimberly Barta	Blue Bouquet	Bonnie and Terri Burgess	Chapel Hill Adventure Club
Caroline and Iman Amin	Nick and Carrie Bartlow	Blue River Elementary School	Burns & McDonnell	Gayla Cheadle
Floyd and Sharon Anderson	Bass Pro Shops	Blue Valley Recreation	Elise Bruce Bush	The Cheesecake Factory
Karen Anderson	Eden and Clara Bax	Blue Valley West Leo Club	Busy Fingers & Helping Hands	Dana Cheney
Mary Anderson	BCTGM1946	Devin Bly	Landon Butler	Chick-Fil-A of Overland Park
Sue Anderson	Heather Beaird-Eisler	BNSF Railway	Blue Valley High School Northwest	Child Health Corporation of America
Barbara Andress	Sea Richardson Amanda Bearly	Shannon Boehmer	Tricia Byard	Children Christmas
Animusic	Marcia Becco	Danniele Bohannon	Rob and Dana Bykowski	Children's Mercy Century Club
	Beverly Begleiter	Adam and Jill Bolling	Robert Byrd	Children's Mercy Family Health Partners
	Mr. and Mrs. Billy Belford and Ainsley	Carol and Bill Bond	Patrice Byrne	Children's Mercy Hospital – GI Clinic
	Alice Belstrin	Bonefish Grill	Robert J. Cahill	
		India Bonin	California Pizza Kitchen	
		Borders Books & Music	Kristin Callaghan	

Children's Mercy Hospital
 – Infectious Diseases
 Children's Mercy Hospital -
 Medical Records Dept.
 Children's Mercy Hospital
 – Resource Development Staff
 Children's Mercy Hospitals and
 Clinics
 Children's Relief Association
 Chip It for Children Golf
 Tournament
 Chisholm Trail Junior High Drill
 Team
 Chisholm Trail Thunder Drill Team
 Chophouse
 Christ Community Church
 Paula Christeson
 Ruth and Gary Christianson
 Church of the Brethren, Women's
 Fellowship
 Church of Jesus Christ of Latter-
 Day Saints
 Church of the Resurrection
 Barbara S. Clark
 Ms. Banti Lauren Clark
 Ms. Jessica Clark
 Mr. Jonathan Clark and Family
 Ms. Rachel Clark
 Ms. Veronica Clark
 Stuart and Leea Clark
 Clay Center United Methodist
 Church VBS
 Katie Clayton
 Clayton Wheeler Foundation
 Clear Creek Elementary School
 Clear Creek Elementary, 1st Grade
 Class
 Shirley Clesson
 Dennis, Sherry and Ryan Cleveland

Jim Cline
 Clinical Reference Lab
 Pat Clow
 Kayla and Justin Cochran
 Jodi Coen's 3rd Grade Class
 Orit Cohen
 Kathy Colantuono
 Janie Collier
 Jessica Collier
 Daniel and Toriana Collins
 Colonial Hills Community of Christ
 Colonial Presbyterian Church
 Colonial Quilt Makers
 Community Covenant Church
 Community Covenant Church 4th
 and 5th Sunday School
 Community of Christ Church
 Community Service Group, Oak
 Hill Elementary
 Tom Compton
 Concordia Elementary School
 Congregation B'Nai Jehudah
 Alice Cook
 Andrew Cook
 James Cook
 Sondra Cooper
 Core Carrier Corporation - Safety
 Dept.
 Corpus Christi Catholic Community
 Anthony Cortese
 Mr. and Mrs. Jim Cosgrove
 Mrs. James R. Couch
 Country Club Christian Church
 Whitney Courser
 Danny D. Cox
 Kathy Cox
 Susan Cox
 Cozy Quilts
 Patty and Paul Crabtree

Paul Crabtree
 Craft Department Senior Center
 June Crane
 Rod Crawford, Gallo Winery
 Creative Consumer Concepts
 Creative Memories
 Crestwood Flowers
 Christina Cross
 Crossroads Church
 Ms. Debbie Crowe
 Jackson Crowther c/o Sally
 Bennett
 Helen and Ted Crynock
 Cub Scout Pack #62
 Cub Scout Pack #264
 Cub Scout Pack #3097
 Gloria Esperanza Cubias
 Karen Cummings
 Michelle Cunningham
 David Cuny
 Murphy Curry
 Curves
 Mr. and Mrs. John Cushion
 Mr. and Mrs. John Custon
 Cutest Pet contest
 Cutest Pet Contest.com
 CVS Caremark
 CVS Pharmacy
 The Cygans
 D.A.M.E. Inc
 Daisy Girl Scout Troop #2094
 Amber Dalrumple
 Cathy Daniels
 Roger Dart
 Jackie Davey
 Mr. and Mrs. David Dees
 Dean Development, Incorporated
 Mr. and Mrs. Vincent Dean
 Dearborn United Methodist Youth
 Group

Alice Dearing
 District 4 DECA
 Miss Alison Dees
 Miss Sara Dees
 Mr. and Mrs. Morris Dell and
 Family
 Delta Kappa Gamma
 Delta Sigma Pi - UMKC
 Demdaco, Inc
 Mary Anne Demeritt
 Diane Dercher
 Dennis DeRoy
 Leanne DeShong
 Rebecca DeWitt
 Diamond Merckens Hogan
 Elise DiCarlo
 Julie Dickerson
 Dickinson Theatres
 Diebels Sportsmen's Gallery
 Mollie Dillingham
 Jane Dirks
 Julie Dishman
 Disney Worldwide Outreach
 Matt Dissinger
 Trish Devine
 Ross Dolloff
 Chantal Donley
 Michael Douglas
 Ryan Drake
 Lisa Dressler
 Melody and Nicholas D'Souza
 Darren D'Souze
 Amanda Duncan
 Terri Duncan
 Sean Durkin
 Durrie Vision
 Ryan and Amy Eakin
 East High School National Honor
 Society

Tom Eaton
 Zac Eber
 Zac, Noah, Eli and Addie Eber
 EBT Restaurant
 Fae Edmondson
 Matt Eichman
 Kristy and Eric Eickhoff
 Elementary Student Council
 Morgan and Barb Ellison
 Elm Grove Elementary School
 Embarq
 Emerging Leaders at William
 Jewell College
 David Emerson
 Adam and Beth Engroff
 The Episcopal Diocese of West
 Missouri
 Belle Epoque
 Melissa Erpelding
 ESA
 Mr. Aaron Estelle
 Mr. Anthony Estelle
 Ms. Carolee Estelle
 Mr. Joseph Estelle
 Ms. Lorie Ann Estelle
 Mr. and Mrs. Matthew Estelle
 Vernon Estes
 Angela Etkind
 Gail Evanoff
 Traci Eversoll
 Executive AirShare
 Faith & Hope
 Faith Village Options
 Families With Purpose
 Family Media Group
 Farmers Insurance Group
 Faubious United Methodist
 Church, Esther Circle
 Jackson Faulkner

Toni Faust	Friends Into Serving Him,	Girl Scout Troop #1235	Mr. and Mrs. Spencer Gregg and	Shawn Hendrix
Chris and Laura Fenner	Association of Operating Room	Girl Scout Troop #1291	Family	The Herrman Family
Fine Arts Alumni	Nurses	Girl Scout Troop #1547	Amy Grice	Myra Hewitt
Tammy Finnegan	Overland Park First Assembly of	Girl Scout Troop #1912	Trey and Aspen Grieshaber	Charles and Nadine Heying
Finucane Project at Rockhurst	God	Girl Scout Troop #1998	Kelly Groff	Brooke Hill
University	Julie Friesen	Girl Scout Troop #3061	Marilyn Gronberg	Rodney Hill
Jack and Delores Fiorella	Gene Fritzel	Girl Scouts Troop #5336	Grundfos Pumps Corporation	Hillcrest Covenant 4th Grade
Fire Prairie Middle School	Ethan Fromson	Giving Girlz of Sacred Heart	Danny and Carol Gurba	Hillcrest Covenant Church
Fireman's Fund Insurance	Tony and Martha Froom	Gladstone Parks & Recreation	Tim Haake	Hillsdale Presbyterian Church
Company	Kathleen Frost	Glazer Distributors	C. J. Hall	Paula Hinds
First Assembly of God Church	Jonathan Fry	Mike Glazier	Janice Hall	HNTB Architecture
First Christian Church Sewing	Kathy Fulton	Glendale Elementary School	Hallmark - IT Department	Hocker Grove Middle School
Group	Lisa and Chad Gahm	Gloria Dei Lutheran Church	Hallmark Cards, Inc	Hocker Grove Students
First Southern Baptist Church of	Chris Gallagher	Regina Glover	Halls Kansas City	Sharon Hoffart
Overland Park, KS	Douglas Galloway	Celeste Gogel	Gary Hamilton	Mark Nelson Hoffman
The Flea Market	Jim Gamble	Lenning Gomez	Family of Paul Hammer	Holden Optimist Club
Jan Flebbe	Joseph Gamble	Lois Goodman	Mike Hampton	Jean Holloway
Fleming Park Primary	Cheryl Garcia	Ella Goodwin c/o Stacie Goodwin	Handmaiden's Remnant Church	Hollyday Aesthetics
Teresa Fliger	Dawson Garcia	Mr. and Mrs. Lawrence Gordon	Hands & Hearts for Children	Joshua Holmes
Mr. and Mrs. Dana Floyd	Mynor Garcia	Gordon Parks Elementary School	Hands to Heart	Holy Cross Lutheran Church
FMC	Cathy Gardner	4th Grade	Bridget c/o Anne Hannon	Holy Trinity Catholic School
Deanna Ford	Renee Garnett	Madeline Gordy c/o Amy Gordee	Loretta Harder	Holy Trinity Catholic School - Pam
Jan Foster	Lacey Gasaway	Julie Gore	Kara and Andrew Harmon	Luby's 3rd Grade Class
Richard Foster	Mary Geehan	Janet Gorham	Clayton E. Harper	Hooper Holmes
David Fox	Cindy Gibson	Erin and Steve Gorny	Chad Harrington	Brianna Hopper
Ellen Fox	Bridget and Ben Giebler	Erin Gould	Harrisonville Middle School 7th	Terri Horan c/o Missy Stover
Keith Fox	Theta Gillett	Grace Baptist Church	Grade Class	Horizon Circle
Kelly Fox	J. Eric Gilliland	Grace Episcopal Church	The Hart Ford	Laura Horton
Fox Restaurant Concepts	Gilmore & Bell	Melanie Grace Foundation	Adlynn Harte	Hosanna Lutheran Church
Francis Child Development	Girl Scouts of NW KS, SE MO	Heather Graham	The Hartford Diversisty and	Maggie Houlehan
Franklin Elementary	Girl Scout Troop #14	Shelby Gray	Inclusion Committee	Grant Howard
Franklin Smith Elementary	Girl Scout Troop #117	Mark and Kim Grebe	Anthony Hauk	Kristine Howard
Fraternal Order of Eagles	Girl Scout Troop #558	Steve Grebinar	Robert Hays	Becky Hubbell
Robert Frazier Co, Inc	Girl Scout Troop #577	For: Gordon, Spencer and Marshall	Marilyn Hector	Jim Hubbell
Paul and Kim Freese	Girl Scout Troop #580	Green	Helzberg Diamonds	Noah Hubbell
Bob and Beverly Friedman	Girl Scout Troop #619	Greenwood Retirement Center	Karen Hempel	Troy Hubbell
Friends Into Serving Him	Girl Scout Troop #673	Mr. Douglas A. Gregg	Denise Henley	The Hudnall Family
	Girl Scout Troop #856	Mr. and Mrs. L. Lorence Gregg	Michael Herbert	Cynthia Hudson
	Girl Scout Troop #930		HERO- Harrah's Entertainment	Mr. Robert Huff

Taryn Huibsch	Lorene Kaszer	Heather Lambirth c/o Deborah Mansell	Little Lambs Preschool Lockton	Mark Matteson
Hunkeler Eye Institute	Jake Kaufman	Gloria Land	Sachia Logan	Maurice's
Mary Husk	Kay Jewelers	Bethany Lane	Lone Jack Elementary	Clarissa McCall
Angela Hutton	KC Aviation Dept.	Mark Lange	Beth Loosebrock	Priscilla McCambry
Hy-Vee	KC Elks Lodge #26	Language Arts Focus Group	Mary Kay Lorenzo c/o Susan Brazeal	McCormick and Schmick's
Image Group Productions-The Daily Show	KC Rebels	Lisa and Brad Lantz	Ly Luck-Smith	Ronald McDonald Room
Indian Hills Middle School Yes Club	KCMO School District	Lathrop & Gage	Lucky Clover 4H Club	Jenny and Clif McDougall
Infinity Fasteners, Inc.	KCPD	Lauren Lauvetz c/o Connie Lauvetz	Lucky Strike	Tug McGraw
Infusion Design	KCUMB - Pediatrics Club	Denise Leatherman	Ann Lutjen	Pat McKamin
Ingels Elementary School	Kearney Southview School	Edward Leavenworth	M&I Bank	Margaret McKenna
Christina Isaacson	Tamra Keefer	Amelia Lee	M&S Grill	Jim and Tanya McKernon and Family
It's a Grind	Rhonda Kennedy	Harris Lee	Heather MacKenzie	McKesson Medical/Surgical
J + R Shoes Inc. - DBA Red Wing Shoes	Keytesville R-3 5th Graders	Lee's Summit Christian Church	Bary Macquart	Lynne McLain c/o Sally Burg
J. Alexander's	Kidding Around Child Center	Lee's Summit Police Department	Macy's	McQuain, DeHardt & Rosenbloom, P.C.
Jabara Family	Kids Country	Laine Legate	Macy's Midwest	Brandon Meadows
Henry Jackson, c/o Cyndy Jackson	Bob Kimbrough	Leo Club	Madison's Angels Chapter	Dawn Mercier
Ms. Becky Jenkins	Jeanette King	Mr. Dana R. Leonard II	Melissa Malcolm	Lois Merle
Caroline Jenkins	Chris and Jennie Kiss	Mr. and Mrs. Dana Leonard	James Malone	Carol Merritt
Mr. and Mrs. Jim Jenkins	Rita Wilson Knitcraft	Mr. and Mrs. Devin Leonard	Jean Ann Maloney	Merryheart Ministries Family Missions
Mr. and Mrs. Michael Jenkins and Logan and Kobe	Knitcraft Yarn Shop	Ms. Haley Leonard	Kelly Manking	MHM Rsources LLC
Nick Jennings	Knob Noster Scholarship Program	Leo's Club, Louisburg H.S.	Debby Mansell	Emma Mikulecky
Ryan Jennings	Linda Knoll	Let's Eat Restaurant Group	Mapes, Coopers, Rice and Shewell Families	Elnora Miller
Matthew Johnson	Koch Bag & Supply Co	Lewis Elementary School	Rodger and Joyce Marble	Kristyn Miller
Melanie Johnson	Fred and Cindy Kohler	K. Lewis	Nancy Marks	Mrs. Natalie Miller
Mason and Connie Jones	Kohl's	Will Lewis	T. Marks	Miracles Happen Ministries
JSHP	Kohls, Liberty	The Lexington McDonalds	Marriott	Mission Sewing
Connie Juhl	Kerry Kohrs	Liberty United.Methodist Church-HIS KIDS	Marriott Hotels	Mission Sewing at Village Church
K C Business Journal	Jennifer Koleil	Liberty View, Blue Valley Schools	Marriott International	Mission Youth Bowlers
Marlene Kahn	Penny Komle	Life Ministries/Break Records	Kevin Marshall	Missouri Employers Mutual
Kansas City Chamber of Commerce	Theresa Korte	Chris Lind	Marshall McDonalds	Missouri Gas Energy
Kansas City Regional Association of Realtors	KPMG	Lindmark Family in memory of Melanie Lindmark	Angela Martin	The Mistler Family c/o Tracy Mistler
Kansas City Southern	Teresa Kraft	Darnell Lindsey	Donna Martin	Kate and John Mitchell
Kastle's Inc. dba The Candy Store	Anne Kruse	Jill Linn	Kara Martin	Marie Moeller
	Ginny Krystal	Linn Valley Auxiliary	Mason Elementary School	Cary Moody
	Kyrie's Gift, Inc	Sydney Liperuote	Mazzarese/TJTS, Inc.	Brenda Moore
	La Plates	The Little House	Andy and Deanna Mathews	
	Billy LaBerge			
	Lake Viking Quilters			
	Rachel LaMar			

David Moore	Northrop Grumman	Overtime	Pleasant Valley Baptist Church and M&I Bank	Residence Inn KCI
Moose Lodge #10 Women of the Moose	Northview Elementary School	Sherry and Jana Owens	Pleasant Green Freedom School, Charisma Hampton's Class	Restore Community Church
Emily Mora	Bryan Norton	Ozark Chapter	PlyGen Siding Group/Industries	Loren Rhein
Moreland Ridge Middle School, 6th Graders	Greer Norton	Palestine Freedom School	Poplar Court Apartments	Malcolm Rhodes
Morgan Stanley	Jeff Norvell	Karen J. Palmer	Randy Powell	Kataryna Richards
Barry V. Morris	Oak Hill Elementary School	Stephanie Palmer	Power on Technologies	Richardson Elementary Student Council
Michelle Morris	Rachel and Beth Oberman	Pamida	Prairie Point Quilt Shop	Richardson Printing
Morse Elementary School	Stacy Obringer-Varhall	Judy Pap	Preceptor Delta	Derald Richey
Andy Mortallaro	Odd Ball Blankets	Staley Pap	Steve Preston	Richmond Kiwanis Club
Mortallaro Falmily	Odd Balls	Parents as Teachers PTA	Price Management	Nila Ridings
Mothers of Preschoolers	Janet K. O'Dell	Curtis and Kellie Parker	Proctor & Gamble	Elizabeth Riedel
Mt. Zion Christian Church	Olathe Junior High School Troop #804	O. L. Parker	Roberta Proctor	Errol and Michelle Riggins
Muffet Petrehn Image Design	Olathe North High School	Jody Parks	Project Linus	Nancy Rimington
K. Jennifer Murphy	Olathe North Student Council	Ryleigh Patience c/o Aimee and Jerome Patience	PTA Riverview Elementary School	Jennifer Ringgold
Renee Murphy	Olathe School	DeLinn Payne	A. Puhak	Louis Rios
Sondra Myers	Olathe Schools Heatherstone	Robin E. Pearce	Pulmonary/ID clinics	Naomi Rippey
Tyler Narron and Family	Oldham/Khosravipour Class FBC Raytown	Margaret Pemberton	PurBlu Beverages, Inc.	Riverview Elementary Students
Nativity Church	Terry O'Leary	Pembroke Hill School	Quest Diagnostics	Jeff Robbins
Nativity Parish - 3rd Grade	Merle Oleson	Mark and Rose Penrose	Aislynn Quinn c/o Linda Quinn	Nikki Robbins
Nativity Parish School	Olive Garden	Anna Persell	Amy Rabousky	Robert Frazier Co., Inc.
Nevada Senior Center	Enk Olson	Tara c/o Kathy Persell	Ron Ragan	Emma Robertson
Nell Hills	Online Angels	Trent Peters	Raintree Community Church	Carl Robinson
Scott Nellis	Carla Orner	Peterson & Associates, P.C.	Randy Reed Pontiac	Christian Robinson
Chris Nelson	Mr. Ostroski's 8th Hour Class	Branedy Peterson	Ravenwood Elementary	Jeanina Robinson
Neosho Middle School	O'Toole	Caroline Peterson	RBC Innovations	Willie R Robinson
The New Dime Store	Ottawa University	Joseph C. Phares	RE/MAX Mid-States Region	Linda Rockel
Newborns in Need, Inc	Our Lady of Angels	Casey Phelps	Pastor Sue Reames	Rockhurst University
Hayden Newby	Our Lady of Angels School	Phi Theta Kappa	Red Development LLC	Logan Rodgers
NHS Elementary School	Overland Park Assembly of God	Randall Norman Pick	Red Hat Ladies	Margaret Roe
Christie Nichols	Overland Park Assembly of God, Friends Group	Ansara Piebenga	Mary Anne Reece	Rolling Hills Church
Nick and Jake's	Overland Park Church of Christ Children's Ministry	Stacey Phillips	Region 2-Family, Career & Community Leaders	Breeana and Maelyn Rooks Room 39
Laura Niederhauser	Overland Park First Assembly of God Friends Group	Vince Piraro	Regional Women's Health Coordinator	Ellen Rosenfeld
Samantha and Sydney Nightwine	Overland Park Regional Medical Center	Pleasant Hill FCCLA	Relief Share	Jane Ross
Nigro Brothers Auctioneers		Pleasant Hill Primary	Remel/Thermo Fisher Scientific	Alene Adele Roy
No.5 Extension Club		Pleasant Hill Primary School 2nd Grade Class	Jordan Remsberg	Rich and Mary Allan Roysdon
Barbara Norman		Pleasant Lea Junior High School		RS Information Systems
Northland Stitchers				Ashley Ruben

Michelle Ruckersfeldt
Donna Ruoff
Russ Berry & Co
Cherie and Audra Ruzek c/o
Cherie Spotz
Ann Ryan
Mrs. Don Saale
Salvatore's Restaurant
Judi Wells Samborski
Shane and Perri Sauer
The Scavuzzo Family
Lynn Schaffer
Olivia, Jackson, Caroline Schaffer,
c/o Jill Shaffer
Spencer c/o Jodi Schade
Jeffery and Dakota Schartz
Linda Schlup
Kenyon Paul Schmanske, Foster's
Wine Estates
Karissa Schmidt
Barbara Schneider
Scholastic Inc. Neosho Site
School of Education
Phyllis Schultz
Schumacher Elementary School
The Scoma Family
Scout Troop #763
Scrappy Quilters
Kelly Seleska
Mary Self
Senior Citizen Center
M. Services
Ruth Settle
Talis and Isabelle Shachtman c/o
Heather Shachtman
Shadow Buddies Foundation
Michael Shae Salon and Day Spa
Frank Shane
Kelly Sharp

Shawnee Church of the Nazarene
Shawnee Mission School District
- Mission Valley 7th Grade
Students
Shawnee Mission West High
School
Shawnee Mission North Canbo
Club
Sylvester Sher
Julie and Jason Shields
Paulette Shilling
Judith Shoerock
Barbara and Jennifer Sidary
Siegrist Elem & Pirate Wearhouse
Mr. and Mrs. Jack Simmons
Mrs. Roberta Simpson
Justin Sims
Joel S. Singer
Sisterhood Congregation B'Nai
Jehudah
Barbara Sizemore
The Slocum Family
Mark and Anna Slocum
Small World Toys
Beth Smith
Hampton Smith
Janice Smith
Jayley Smith
Margaret S. Smith
Mercedes Smith
Pete and Leslee Smith
Roseanna Smith
Tracy Smith
Smithville Methodist Church
Women's Group
South & Associates
South Coast Circulation Inc
South Harrison R-11 School
South Wood Christian Church

Southview Elementary School
Spencers Treasures
Kerri Spillman
Sprint
Sprint Wireless OPS
SPX Cooling Technologies
St. Andrew's/St. Paul's Episcopal
Youth Groups
St. Paul AME Church, Youth Dept.
St. Paul's Episcopal Day School
- 4th Grade
St. Sabina Catholic Church Youth
St. Teresa's Academy, National
Honor Society
St. Thomas More
St. James School 2nd Grade Class
St. Joseph Catholic School
Students and Staff
St. Matthews United Church of
Christ
St. Michelle Wines - Mark
Schroeder
Staley High School
Matt Stanislaus
Mr. and Mrs. Chris Staples,
Mackenzie and Madison
Ms. Caryl Staples
Staples Promotional Products
Starbucks
Josh Stegmaier
The Stegeman Family
Logan Steinert
Lillian Stevenson
Ashley Stickler
Stephen Strohm c/o Wendy Strohn
Stitch & Stuff Club
Stitch & Stuffers
Stitches from the Heart

Joe, Julie, Andrew, Aaron
Stockmann
Jamie Stoughton
Ms. Phyllis Strobel
Johnnie and Diane Strong
Wayne Stroud
Tammy, Kylie, Cole and Jim
Stuckey
Studio Chyree
Sullivan's
Jennell Summers
Michelle Summers
Sunflower Elementary School
Sunlight Rejuvenation Spa
Package
Sunrise Assisted Living
Superior Linen Supply Co., Inc.
Mrs. Sutton's Class
Kathy Swatek
Sweet Cheeks Teddy Bears
Lisa Swinton
Adam Szura
Target
Technology Plus
The Teddy Bear Project
Charles Teenor
Chris Teenor
Teksystems
Meghan Theiss
Thermo Fisher Scientific-Remel
Think
Think Resources
Caleb and Ella Thompson
Cody Thompson
Dr. Doug Thompson c/o Melany
Duncan
Three Trails Van Club
Ticket Solutions in memory of
Melanie Lindmark

Erica, Talyan and Hailee Tignor
Time Inc
Susan Tinich
Grace Tohill
Steve Torre
Kathey Torres
Robin Toy
Toys from the Heart
Trapp & Company
Jo-Nell Treese
Connie Treffer
Mike Trenkamp
Evelyn Tresnak
Trezo Mare
Trinity U.C.C.
David Turner
Heather Turner
Turney Mercy Sewing Circle
Benjamin Twyman Memorial Fund
Twyman Family
Uhlig LLC
The Uhrmacher Family
Brent Uhrmacher
Ultimate Athletic Sportswear
Ann Unger
University of Colorado
University of Kansas Graduate
Business School Council
University of Missouri Basketball
Program
USA Licensed Bows, Inc
USborne Books
USMC
Aria Utt
Chris Van Laanen
Lynn Van Laanen and Family
Shari Van Lachem
Kelly VanElders
VFW and Auxiliary #18

Vets Auxiliary for Women #1738	Christine Weber	Chris Woltkamp
VFW #1738 Post Women's Auxiliary	Webster House	Women of Steel
VFW #2279	Makenzie Wedel	Women on Mission
VFW Post #5789, Ladies Auxiliary	Rachel Wehmeier	WOMPI
VFW #6603, Blue Springs	Terri Wells	Christopher Wood and Friends
Victoria FCCLA	William Wells	Teresa Wood
Victory Temple Christian Life Center	E. H. Wendorff	Woodand Parks Elementary School
Greg and Maggie Vielhauer	Mary Werth	Riann Woods
Village Church	West Platte R-2 High School	Marlene Woolston
Village Presbyterian Church Day Camp	Joy Westberg	Worlds of Fun
Village Presbyterian Church, Mission Sewing Group	Westlake Hardware	Mike and Chandra Worley
Village Shalom	Vicki Westlake	Jesse Wray c/o Heidi Lee
Visual Merchandising GC	Westridge Elementary School	Ann Duvall Wyatt
Donald and Diana Volz	Westridge Middle School	Wyatt Park Christian Church
Kerri and Diana Volz	Westwood Lutheran Church	Xavier's Heart to Heart
Jane Voorhees	Kyle and Lindsey Whigham	Xi Iota Phi
Waddell & Reed	Mr. and Mrs. Derek White and Abi and Gavin	YMCA -- Indian Creek Elementary
Waddell & Reed, Legal Dept	Whiteman Air Force Base - 509th Operations Support Squadron	Megan Yohe
Tammy Wagner	Marvin and Dorothy Whitsett	Jane York
Wagstaff and Cartmell, LLP	John C. Wigner	Travis Youngblood
Sandy Wahoff	Deanna Wiley	Youth Leaders International
Leah Wainstock	Josie Wilkens	Zeta Epsilon Chap. ESA Internatl.
Jenny Waldeck	Mary Grace Williams c/o Rachele Williams	Zeus Media LLC
Waldenbooks	Ryan Williams	Zouire Marketing
Stuart Waldman	Tom and Karen Williams	
Kathryn Wallace	Pamela P. Willis	
Walton Construction Companies	Libby Wilson c/o Ruth Wilson	
Jennifer Ward	Brooks Wisdom	
Dana C. Warren	Anna Wise	
Margaret Waterman	Mrs. Bibi With	
Lucinda Watson	Wittman Family	
Nita Chyree Watson	Joy Wockman	
Tom Watson	Michael Wolfe	
Maddie Watts	Robert Wolfe	
Arah Weaver	Wolfe Automotive Group	
	Alicia Wolford	



Hands & Hearts for Children Board members.

Alice Berry Graham Associates

- Nancy L. Addy, DDS
- Brenda S. Bohaty, DDS
- Robert A. Boraz, DDS
- Amy Burlison, DDS
- Gerard R. Feldhaus, DDS
- Lynn Roosa Friesen, DDS, MS
- Glenn V. Hemberger, DDS
- Anthony L. Ingino, DDS
- Ronald L. Kramer, DDS
- Diane E. Kramer
- James W. Lowe, DDS
- H. Edward Martin, DDS
- Michael D. McCunniff, DDS
- Susan D. McMillen, DDS
- Brett H. Mueller, DDS
- Robin L. Onikul, DDS
- Nick A. Prater, DDS
- Gloria J. Roberts, DDS
- Robert G. Smith, DDS
- Tam C. Smith

Children's Mercy Cancer Center

- Patricia J. Beck
- Katie E. Chaney
- Callie M Cosentino
- Scott D. Ferguson
- Jamie B. Gubera-Cooper
- Michael J. Hayes
- Jeffrey Holthaus
- Caitlin Hubbs
- Kelly Qamar

Children's Mercy Century Club

- Elizabeth L. DeWitt
- Ross D. DeWitt
- Marilyn Gronberg
- Joyce Harrah
- Helen Merrigan
- Dorothy L. Olson
- Jeanette V. Rafiner
- Mary Lou Surrey
- Patricia J. Trapp

Children's Relief Association

- Diane D. Bradshaw
- Bridget F. Brill
- Elizabeth R. Fountain
- Katherine T. Hughes
- Debra D. Kennedy
- Pamela B. Kessler
- Carol H. Logan
- Ellen B. Merriman
- Isabel Thomson Paxton
- Nancy D. Sachse
- Nancy N. Stark
- Bridget Wagstaff
- Katherine L. Wells

Barb Thompson, Lisa Schellhorn and Jill Peterson of Friends of Children's Mercy.



Friends of Children's Mercy

- Jamie Berg
- Shirley Biswell
- Emily Boeshaar
- Holly Beineman
- Kate Chaney
- Melanie Chapman
- Alison Coulson
- Betty DeWitt
- Lynn Roosa Friesen
- James R. Gamble
- Marilyn Gronberg
- Pamela Kessler
- James W. Lowe
- Liz Paugoulatos
- Jill Peterson
- Sue Sabaugh
- Nancy Sachse
- Barb Thompson
- Suzanne K. Willey
- Amy Wurst

Hands & Hearts for Children

- Anne Marie Bennett
- Jamie Berg
- Dana Bykowski
- Joseph L. Cisper
- Mitchell Clark
- Blish Mize Connor
- Diane Dercher
- Erik Edwards
- Monique Exposito
- Richard J. Flanigan
- James R. Gamble
- Joe Gregg
- Erin E. Gorny
- Joe Gregg
- Timothy G. Haake
- Karen L. Hempel
- David T. Hunt
- Spencer A. Jones
- Lisa Lantz
- Susan Bernstein Luetje
- Matthew J. Mason
- Kate Mitchell
- Kathleen Nemechek
- Anita Bajaj Newton
- Craig Novorr
- Megan C. Rupp
- Andrew J. Teigen
- Heather G. Wong
- Melissa K. Wood

Maywood Mercy Hospital Club

- Shirley Biswell
- Betty Donaldson
- Helen Gray
- Reva Hallford
- Linda Moberly

Active Volunteers

Elizabeth Aarons	Marge Bradrick	Gertrude Coffey	Betty DeWitt	David Faust	Christine
Gayathri Acharya	Diane Bradshaw	Patricia Colling	Dean DeWitt	Jessica Fawcett	Gaughan
Judy Adams	Joel Brady	Bea Collins	Ross DeWitt	Rosalie Fein	Barbara
Kathy Adams	Mark Brandmeyer	Jessie Colonna	Gwen Dieckmann	Stephen Fein	Gebauer
Kim Aliber	Kelli Breer	Phyllis Combest	David Dobson	Ruth Feld	Jeannie Gentile
Melissa Allbee	Kellyn Brems	Janet Conard	Mary Doherty	Rebecca Feller	Patty Geraghty
Joseph Allen	Bridget Brill	Patrick Connor	Aimee Doll	Renata Fernandes	Deborah
Eric Ames	Ruth Ann Bruce	Kitty Cooper	Shirley Donahue	Elizabeth Ferrell	Gilbert
Ronald Amos	Jared Brunton	Sharon Corben	Brenda Doolin	Carolyn Finley	Charlesetta
Reed Anderson	Linda Buckley	Thomas Coscarelli	Chad Doornink	Robert Finuf III	Gilliespie
Janet Arnold	Cathy Buckner	Alison Coulson	Danny Dorrell	Jessica Fiscella	Allison Glass
Martha Arthur-Flaherty	R.W. Buel III	Katie Cowan	Jennifer Dorsey	Ashley Fisher	Celeste Gogel
Jennifer Austin	Zanne Buffum	Nancy Cox	Susan Douthitt	Jo Fisher	Matthew Golden
Amy Ayers	James Burcalow	Lindsey Craft	Marilyn Driscoll	Kristin Fisk	Melanee Goodman
Lanna Bahnmaier	Sherry Burns	Yvonne Craig	Graciela Duer	Janice Flanagan	Barbara Goodrick
Grenetha Baldwin	Beverly Burton	June Crane	John Duer	Kevin Flanagan	Betty Goodwin
Tera Balistreri	Chuck Burton	Michael Crane	Ann Dunford	Shari Flanagan	Stephanie Gootee
Kate Banks	LeeNora Bussey	Julie Crawford	Jessica Dunham	Nancy Fletcher	Kelsey Gowin
Sheila Barker	Tiffany Camp	Ellen Cray	Angela Dunn	Maria Fogliasso	Janie Grant
Laura Barnds	Caitlin Campbell	Doris Crews	Anton Dvorak	Santana Fortney	Robert Grant
Wayne Barron	Kevin Campbell	Anne Crook	Lynda Dvorak	Elizabeth Fountain	Shannon Grantham
Jennifer Barwinski	Garret Capling	Laura Crowe	Anne Edmonds	Beth Fowler	Emily Green
Lynette Bates	Phyllis Capps	Patricia Cummings	Loren Edraney-Rhein	Susan Fraley	Ann Greene
Alan Beatty	Bryan Cardwell	Angela Currie	Beth Edwards	Kimberly Freese	Deborah Greenstein
Linda Beatty	Heather Carrel	Barb Curtin	Fern Eisele	Elizabeth Fries	Donald Gregory
Judith Beck	Shelley Cartmell	Diana Cusser	Kara Elgin	Kay Frisby	Laura Gregory
Debra Bettes	Lyndon Chamberlain	Leslie Dado	Gwendolyn Elliott	Emma Fulk	Camille Grewing
Frank Bible	Jared Chapman	Thomas Dailey	Emily Ellsworth	Donald Fulks	Marilyn Gronberg
Lindsay Birnbaum	Melanie Chapman	Catherine Daniel	Jill Embry	Elizabeth Fulton	Richard Gronberg
Bobbi Bischoff	Melissa Chatman	Lindsey Daniels	Wendy Erickson	Sherry Fuqua	Hope Grunt
Cristina Bland	Karen Chen-Manning	Carol Davis	Patricia Erwin	Betty Galamba	Lillie Guidry
Laura Bluhm	Laura Chisholm	Glen Davis	Sue Etrick	Marshall Gale	Leslie Gustafson
Dana Bobbett	Rachel Christensen	Judy Davis	Michele Euritt	Florence Galyon	Garret Guthrie
Emily Boeshaar	Shelley Ciszewski	Melanie Davison	Jacqueline Evans	Valencia Gant	Roberta Guynn
Ellen Bolen	Marie Clark	Heide Dawson	Emily Eveloff	Andrew Garcia	James Gwinn
Jamie Bolen	Sally Clark	Leah Dawson	Janis Fakoury	Jeannie Gardner	Sally Haake
Cynthia Bolin	Michael Clifford	Sergio Delgado	Wendy Faoro	Linda Gardner	Hazel Hagel
Lindsay Bowers	Gail Cluen	Maria Delgrado	Stacey Farrill	Tabitha Gardner	Betty Hahn
Vilma Brackeen	Jennifer Coen	Erin deVries	Lisa Fasone	Greg Garrison	Marie Hahn



Honoring Lifetime Service of our volunteers

Jameia Haines
Randi Haith
Rosalie Hall
Paula Halsey
Caylee Hamann
Patricia Hankins
Barbara Hanson
James Hanson
Connie Happell
Jeffrey Harms
Matthew Harness
Joyce Harrah
Dorothy Harris
Kathleen Harris
Mary Harrison
Sarah Hart
Sarah Hartman
Marcia Haxton
Jeremiah Hayes
Brian Hayhow
Cathy Hedlund
Kristen Henchek
Trish Henderson
Diane Henderson-Juett
Dina Hendrix
Jo Henson

Dolores Henzlik	Anita Jackson	Brandon Kinney	Vicky Leonard	Dee McDaniel	Brandy Moore	Dorothy Olson
Sherri Herren	Suzanne Jackson	Phil Kinney	Michael Leslie	Harley McDaniel	Eleanor Moore	Megan O'Malley
Teresa Herrmann	Gayle Jagoda	Allison Klinock	Barbara Lewis	Shirley McDonald	Mandy Moore	Marvin Orlovick
Richard Herz	Marianne James	Jeanne Knapp	Cyndee Lewis	Jill McGee	Deborah Moreno	Pat O'Roark
Bette Hetzel	Elizabeth Janner	Tina Knox	Jane Lewis	Thomas McGrath	Connie Morgan	Rene Owens
Kristen Hewlett	Frances Jenny	Judy Kobel	Stephanie Lewis	Lynne McLain	Susan Morgan	Rosemary Padilla
Adrienne Hickman	Lauren Jeppson	Elizabeth Kontras	Tivol Lewis	Sandy McLarney	Ninfa Moritz	Nancy Palmer
Lisa Hickok	Alice Jewell	Brian Korb	Stephen Limpic	Karen McLeese	Babs Morris	Susan Palmer
Sarah Higdon	Sheila Jewell	Danielle Kotz	Sarah Lindgren	Michelle McMillan	Elizabeth Morris	Mary Jo Panzero
LaDell Hill	Amy Johnson	Joyce Koufer	Amy Lindley	Mary Jo Meara	Mary Mowery	Amanda Parr
Robert Hill	Diane Johnson	Mary Krause	Karri Lindmark	David Medley	Thomas Mueller	Liz Paugoulatos
Bonnie Hodge	Julie Johnson	Sandeep Krishnan	Lyllis Ling	Sharon Medley	Denise Mundy	Heather Paxton
Karen Holcomb	Kristen Johnson	Joyce Kronmueller	Laura Lintecum	Consejo Meeting	Sharon Murray-Mueller	Isabel Paxton
Evangeline Holladay	Timothy Johnson	Amanda Krueger	Carol Logan	Andrea Mejia	Dana Nelson	Brooke Pearl
Joyce Holland	Valerie Johnson	Linda Kuhnhoff	Vanessa Lollar	Rochelle Menard	Ryan Newberry	Rose Ann Pearl
Verdis Holloman	Jeremiah Jones	Denice Kurtz	Laura Lorenz	Cindy Mense	Jessi Newell	Dolores Perez
Sarah Holmes	Nancy Jones	Kathleen Ladley	Evelyn Lowenthal	David Merchant	Barry Nicholas	Erin Perkins
Elizabeth Horn	Teresa Jones	Lois Lakey	Zach Luea	Michael Meroney	Erin Nickell	Nighisha Perkins
Laura Horseman	Kathryn Joseph	Elizabeth Lambie	Alma Lugo	Helen Merrigan	Rebekah Nickloy	Deidre Peterman
Robert Hostetler	Lindsay Jurden	Paul Lambie	Nina Mackey	Nancy Merrill	Joan Nickum	Viola Peters
Thomas Hostetler	Meghan Kane	Fran Lancaster	Thomas Maddox	Ellen Merriman	Quita Nimrod	Nancy Petersen
Elizabeth Howard	Douglas Kaploe	Bruce Landeck	Julie Mahurin	Irene Merritt	David Noblit	Jill Peterson
Kendra Howard	Heather Kappler	Janet Langley	Brenda Maloney	Kenneth Metz	Stephanie Noblit	Barbara Pfaff
Steve Howard	Baljit Kaur	Stephanie Lankford	Ryan Mang	Marianne Metzger	Darcy Nord	Lisa Phillips
Carolyn Hudson	Pam Keenan	Jane Larson	Aaron Mansfield	Anthony Meyer	David Noyce	Stacey Phillips
Patricia Hudson	Nancy Keene	Billie Lash	Mary Marcum	Rebecca Meyer	Paula O'Callaghan	Ansara Piebenga
Lois Huffman	Maiya Kelley	Kayla Lash	Kim Marcusen	Robert Meyer	Gerald O'Connell	Sherill Piester
Avery Hughes	Tonya Kelly	Andrea Lattimore	Betty Jo Marder	Debbie Mikel	Melissa O'Connell	Amanda Piltz
Betsey Hughes	Colleen Kennedy	Patrick Laughlin	Richard Marien	Christina Miller	Andrea O'Donnell	Michelle Pirie
Elizabeth Hughes	Debbie Kennedy	Lindsey Laurence	Sarah Marshall	DeeJo Miller	Connor O'Donnell	Michelle Pleimann
Katherine Hughes	Deanna Kerr	Richard Lawson	Kay Martin	Hannah Miller	Darby O'Donnell	Ann Poehler
Susie Hughes	Eleanor Kerr	Pamela LeClair	Kelsey Martin	Jennifer Miller	Melva O'Donnell	Tara Polca
Bernie Huhn	Mariella Kerr	Benjamin Lee	Susan Mayfield	Leslie Miller	Taryn O'Donnell	Carole Price
Marlaina Humble	Pamela Kessler	Kevin Lee	Nathaniel Maze	Pam Miller	Betty O'Dowd	Carolyn Prichett
Mary Hunkeler	Wendy Kiefer	Melissa Lee	Carolyn McCaul	Sue Miller	Casey O'Flaherty	Kristine Purvis
Lily Hunter	Mary Kinart	Renee Leeds-McDaniel	Marti McClammer	Susan Miller	Judi O'Grady	Brenda Quintana
Laurie Ingram	Ashely King	John LeGrotte	Bobbi McConnell	Pam Minnick	Elizabeth Oke	Deborah Quirk
Emily Izen	Jennifer King	Brandy Leivan	Kelsey McCormick	Christina Mohr	Betty Oleen	Lorna Raden
Andrea Jackson	June Kinnett	Chad Leivan	Sandy McCray	Raechel Monn	Martha Oliver	Harriet Radetsky

Active Volunteers

Jeanette Rafiner	Peggy Rooney	Jerry Shaw	Jennifer Stallbaumer
William Rafiner	Elaine Rosen	Patsy Shawver	Alice Stark
Tara Raghuveer	Ann Rosenwasser	Linda Shay	Nancy Stark
Robin Rahardja	Laura Roth	Tina Shea	Allyn Starr
Katina Rahe	Meghan Rouchka	Grace Shih	Linda Steadman
Kelly Ranallo	Patricia Roy	Dena Shipley	Cindy Stehl
Ashley Rand	Charlotte Ruben	Cindy Siemers	Gennie Stehn
Estelle Randol	Pauline Rubin	Virginia Sifers	Kim Stephenson
Kim Rappold	Ed Rush	Chris Sigler	Johnathan Stepp
Chris Rathmann	Sharon Rush	Linda Sigler	Christopher Stewart
Cassandra Rausch	Sue Sabaugh	Robert Sigler	Dawn Stillinger
Andrew Ray	Nancy Sachse	Scott Sigler	Laura Stoecklein
Jessica Ray	Shirley Sanders	Catherine Simons	Jennifer Stone
Billie Reagan	Angela Saran	Kevin Simpson	Luke Strahm
Laura Redmond	Lety Sarmiento	Cassandra Skinner	Nan Streen
Helaine Reed	Jennifer Sawyer	Julie Smart	Christine Strelluf
Theresa Reed	Nancy Saylor	Belinda Smith	Kathleen Stubbers
Walter Reed	Joe Scarlett	Hermazene Smith	Steven Sturis
Clarence Regas	Julie Scheer	Holly Smith	Jeffrey Suknot
Kari Rehberg	Lauren Scheldrup	Jeannine Smith	Sally Sulzer
Beverly Rein	Lisa Schellhorn	Joyce Smith	Mary Lou Surrey
Laurie Reinhold	Matthew Schneider	Michael Smith	Judy Swanson
Caroline Reintjes	Shereen Schreuder	Mike Smith	Mark Swanson
Claire Reintjes	Alex Schriener	Rebecca Smith	Katherine Swatek
Jeannette Reintjes	Bev Schuepbach	Samantha Smith	Chris Tatum
Barbara Reno	Cathy Schultz	Sharon Smith	Sara Taylor
Karan Rice	Shelly Schumaker	Mechelle Smokorowski	Marie Tayrien
Lezlie Richardson	Mary Schumm	Pamela Snyder	Brigid Tearney
Joan Ridge	Kelly Schwabauer	Linda Sola	Jeremy Thieman
Kimberly Riley	John Schwertley	Paula Sorg	David Thomas
Katherine Rist	Thomas Scott	Jeanne Sosland	Cheri Thomas-Lightner
Samantha Roach	DeWayne Seaman	Dolores Sosnow	Barbara Thompson
Larry Roberts	Georgia Seaman	Lucy Spare	Jonathan Thompson
Shirley Roberts	Joy Searls	Paul Spearman	Gretchen Thum
Donald Robertson	Jaime Seematter	Stephanie Spears	Ann Tinsman
Mary Robinson	Kara Settles	Cheryl Speed	Greg Todd
Cheryl Roht	Elizabeth Shaffer	India Spenner	Pat Trapp
Suzanne Romain	Kara Sharp	Mary Jo Spino	Connie Treffer
Emily Rook	Chris Shaw	Cecelia Stadler-McNair	Marjorie Trinkl



Volunteers gather to celebrate their many hours.

Nancy Truitt	Ramona Welch	Patrick Williams
Joy Turner	Kathy Wells	Susan Williams
Patricia Urban	Chad Welter	Jim Wilson
Maribel Valadez	Anne Weltner	Dorothy Winburn
Fernando Valle	Frank Wheeler	Jim Wines
Abby Van Kooten	Pamela Wheeler	Jeff Wingo
Rachelle VanGotten	Sandy Wheeler	Teresa Winston
Elizabeth VanLeeuwen	Marie Whitacre	Lori Wolf
Robert VanVacter	Leslie Whitaker	Brandon Wood
Tricia Venters	Kathie White	Eric Worster
Anne Vezeau	Norma White	Melissa Wunder
Burt Wagenknecht	Ashley Whiteside	Amy Wurst
Bridget Wagstaff	Patti Whitlock	JoAnn Wymore
Jenny Waldeck	Patricia Wicke	Beth Yates
Chelsea Waller	Toshia Widener	William Yord
Hsiao-Lin Wang	Drolette Wiedeman	Barbara Young
Alison Ward	Molly Wiedeman	Jenny Young
David Warren	Sabra Wiegiers	David Zakutny
Diana Warren	Jessica Wilcox	Megan Zarger
Randall Warren	Brittany Wilderson	Wendy Zecy
Kathleen Ways	Meagan Wilderson	Martha Zelada
Heather Weber	Peggy Wilkerson	Eulalie Zimmer
Henry Weber	Leslie Wilkinson	Carol Zimmerman
Sam Weeks	Suzanne Willey	Ashley Zondca
Judith Weinstein	Belinda Williams	
Andrea Weisz	Kathleen Williams	

Endowed Chairs

The Marion Merrell Dow/Missouri Chair in Pediatric Clinical Pharmacology

J. Steven Leeder, PharmD, PhD

Est. 1995

The Joseph Boon Gregg/Missouri Chair in Pediatric Cardiac Surgery

Gary Lofland, MD

Est. 1997

The William R. Brown/Missouri Chair in Medical Genetics and Molecular Medicine

Vacant

Est. 1997

The Dee Lyons/Missouri Chair in Pediatric Immunology Research

Lanny Rosenwasser, MD

Est. 1998

The Thomas Holder/Keith Ashcraft Chair in Pediatric Surgical Research

Vacant (pending)

Est. 2000

The Sosland Chair in Neonatal Research

William Truog, MD

Est. 2001

The Marion Merrell Dow Chair in Pediatric Pharmacogenomics

Stephen Spielberg, MD, PhD

Est. 2002

Joyce C. Hall Distinguished Professor of Pediatrics

Kevin J. Kelly, MD

Est. 1967

The Katharine B. Richardson Chair in Pediatric Surgery

George Whitfield Holcomb III, MD

Est. 1973

The Jerry A. Smith Chair in Pediatrics

Vacant

Est. 1985

The Dr. Rex and Lillian Dively Chair in Pediatric Orthopedic Surgery

Bradley Olney, MD

Est. 1989

The Ernest L. Glasscock, MD, Chair in Pediatric Education and Research

Stanley Hellerstein, MD

Est. 1990

The Marion Merrell Dow/Missouri Chair in Pediatric Medical Research

Gregory L. Kearns, PharmD, PhD

Est. 1995

Medical Staff Leadership

V. Fred Burry, MD

Executive Medical Director/Executive Vice President

Charles Roberts, MD

Associate Executive Medical Director/Vice President /Associate Professor of Pediatrics, UMKC School of Medicine

Kevin J. Kelly, MD

Pediatrician-in-Chief/Joyce C. Hall Distinguished Professor of Pediatrics/Associate Dean, UMKC School of Medicine

George Whitfield Holcomb III, MD

Surgeon-in-Chief/The Katharine B. Richardson Endowed Chair in Pediatric Surgery/Professor of Surgery, UMKC School of Medicine

Medical Staff Officers**Douglas Blowey, MD**

President

Milton Fowler Jr., MD

President-Elect

John Sommerauer, MD

Secretary-Treasurer

2008 Division and Section Chiefs**Daryl Lynch, MD**

Section Chief
Adolescent Medicine

Robin Onikul, DDS

Department Chair
Dentistry

Wayne Moore, MD

Section Chief
Endocrine/Diabetes

Howard Kilbride, MD

Section Chief
Neonatology

Ann Modrcin, MD

Section Chief
Rehabilitation Medicine

Julie Strickland, MD

Section Chief
Gynecological Surgery

Jay Portnoy, MD

Section Chief
Allergy/Asthma/
Immunology

Amy Nopper, MD

Section Chief
Dermatology

Charles Roberts, MD

Section Chief
Gastroenterology

Bradley Warady, MD

Section Chief
Nephrology

Andrew Lasky, MD

Section Chief
Rheumatology

Gregory Hornig, MD

Section Chief
Neurosurgery

Kathy Perryman, MD

Section Chief
Anesthesiology

Michele Kilo, MD

Section Chief
Developmental and
Behavioral Sciences

Kenneth Wible, MD

Section Chief
General Pediatrics

William Graf, MD

Section Chief
Neurology

Gary Lofland, MD

Section Chief
Cardiovascular Surgery

Scott Olitsky, MD

Section Chief
Ophthalmology

R. Gowdamarajan, MD

Section Chief
Cardiology

Lisa Schroeder, MD

Emergency Medical
Services
Interim Division Chief

Gerald Woods, MD

Division Chief
Hematology/Oncology
Section Chief
Hematology

David Zwick, MD

Department Chair
Pathology and
Laboratory Medicine

**George Whitfield
Holcomb III, MD**

Department Chair
General and Thoracic
Surgery

Brad Olney, MD

Section Chief
Orthopaedic Surgery

**J. Steven Leeder,
PharmD, PhD**

Section Chief
Clinical Pharmacology
and Medical Toxicology

Milton Fowler Jr., MD

Section Chief
Children's Mercy South
Urgent Care

Alan Gamis, MD

Section Chief
Oncology

Brian Pate, MD

Section Chief
Pediatric Hospital
Medicine

Ron Sharp, MD

Section Chief
General and Thoracic
Surgery

Daniel Bruegger, MD

Section Chief
Otorhinolaryngology

Gary Wasserman, DO

Section Chief
Clinical Pharmacology
and Medical Toxicology

Thomas Tryon, MD

Section Chief
Children's Mercy
Northland Urgent Care

Mary Anne Jackson, MD

Section Chief
Infectious Disease

Medical Genetics
Section Chief -Vacant

Terrence Carver, MD

Section Chief
Pulmonology

Frank Morello, MD

Interim Department
Chair
Radiology

Walter Andrews, MD

Section Chief
Transplantation

J. Patrick Murphy, MD

Section Chief
Urological Surgery

Virender Singhal, MD

Section Chief
Plastic and
Reconstructive Surgery

Children's Mercy Hospital Senior Management

Randall L. O'Donnell, PhD
President/Chief Executive Officer

V. Fred Burry, MD
Executive Medical Director/Executive Vice
President

Karen Cox, RN, PhD
Executive Vice President/Co-Chief Operating
Officer

Sandra A.J. Lawrence
Executive Vice President/Chief Financial
Officer

Jo Stueve
Executive Vice President/Co-Chief Operating
Officer

David Westbrook
Senior Vice President of Strategy and
Innovation

Lonnie Breaux
Vice President, Facilities

Kimberly Brown
Vice President, Audit and Compliance

Warren Dudley
Vice President, Market Development and
Outreach

Robert Finuf
CEO, Children's Mercy Family Health Partners

Joe Galeazzi
Vice President, Medical Affairs

Cheri Hunt
Vice President/Chief Nursing Officer

Laurisa Jackson
Vice President, Revenue Cycle and Supply
Chain

D. Bradley Leech
Vice President/Chief Development Officer

Barbara Mueth
Vice President, Community Relations

Genny Nicholas
Vice President, Government Relations

Charles Roberts, MD
Associate Executive Medical Director/Vice
President

Sally SurrIDGE
Vice President/General Counsel

Terry Weathers
Vice President of Finance/Controller

Dan Wright
Vice President, Human Resources

The 2008-2009 Children's Mercy Hospital Board of Directors

Ed Connolly, Jr.
Chairman

Page Reed
Vice Chairman

Charles Schellhorn
Treasurer

Robert Jackson, MD
Secretary

William Daniels, DO

Peggy Dunn

Mary Hunkeler

Jim Nutter, Jr.

Randall L. O'Donnell, PhD

David Oliver

Jack Ovel

Margi Pence

Jon Zindel

Hospital Leadership

Stats & Finance

Fast Facts 2008

Inpatient Care

Admissions (CMH and CMS)	15,236
Average Length of Stay	4.3
Average Daily Census	221.7
Occupancy Rate	70.4%

Patient Days

Medical/Surgical	48,183
Intensive Care Nursery	19,424
Pediatric Intensive Care Unit	7,198
Children's Mercy South Patient Care Unit	6,131
Total Patient Days	80,936

Outpatient Visits

Children's Mercy Hospital	150,707
Children's Mercy South	54,041
Children's Mercy Northland	10,162
Primary Care Clinics	72,054
Outreach Clinics	2,868
Total Outpatient Visits	289,832

Home Care Visits

2,213

Emergency/Urgent Care Visits

Children's Mercy Hospital	69,563
Children's Mercy South	51,539
Children's Mercy Northland	19,899
Total Emergency/Urgent Care Visits	141,001

Surgical Procedures

Inpatient	4,282
Outpatient Surgery	11,847
Total Surgical Procedures	16,129

Medical Staff

599

Volunteers

1,038

Employees (Total FTE)

4,476

Sources of Revenue

(dollars in thousands)

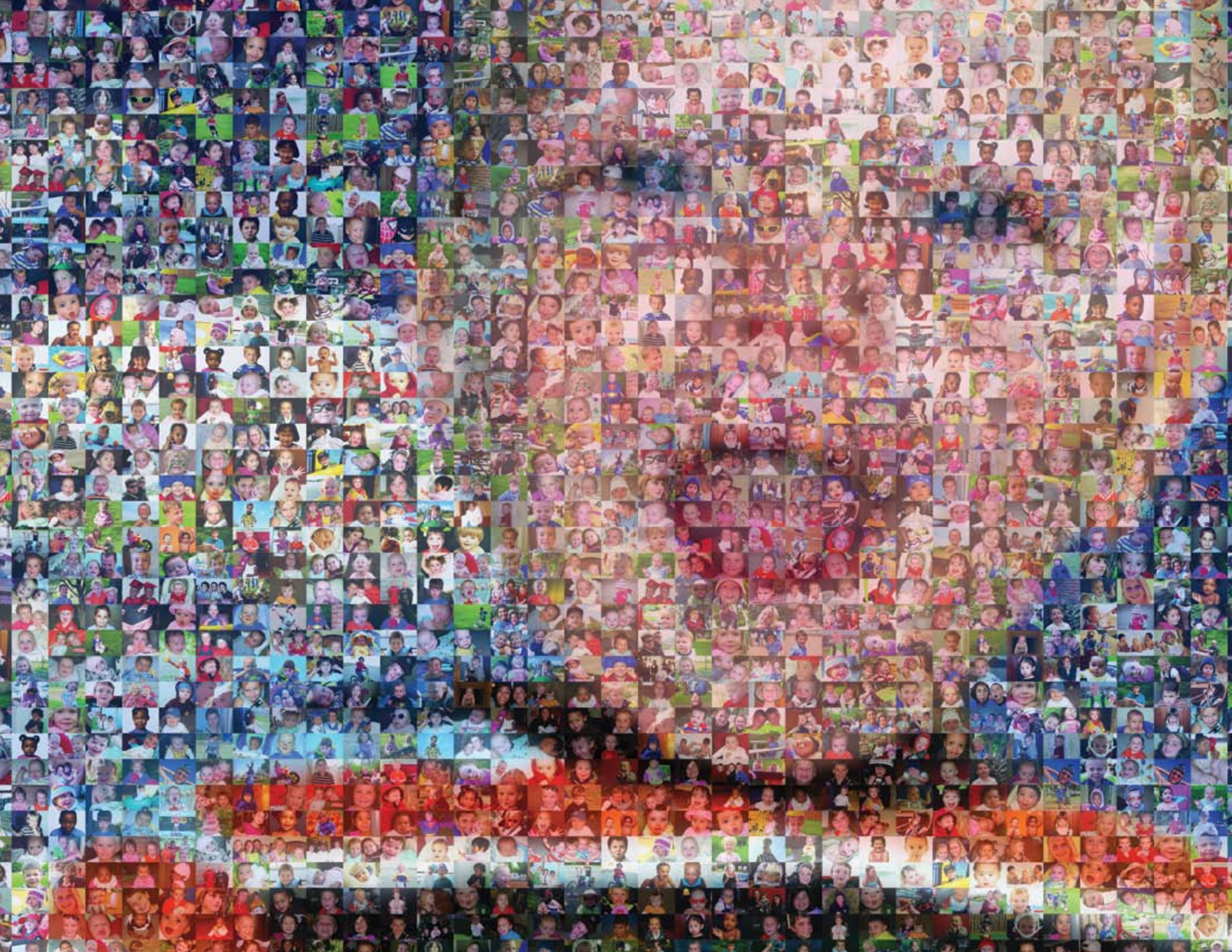
	2008
Patient Care Services	643,625
Other Operating Revenue	4,868
Grants and Contracts	8,198
United Way	1,219
County Courts	565
City of Kansas City, MO	1,200
Investment Income	7,893
Assets Released from Restrictions	12,731
Unrestricted Gifts And Bequests	7,264
Total	687,563

Uses of Revenue

(dollars in thousands)

Charity Allowances/Bad Debt	13,252
Salaries and Benefits	348,483
Supplies and Other Expenses	188,692
Depreciation and Interest	53,024
Other	50,714
Total	654,165







Children's Mercy
HOSPITALS & CLINICS
www.childrensmercy.org

2401 Gillham Road
Kansas City, MO 64108
(816) 234-3000



In academic affiliation with the University of Missouri - Kansas City | EOE/AAE