

Children's Mercy Kansas City

## SHARE @ Children's Mercy

---

Care Process Models

Quality Improvement and Clinical Safety

---

6-2020

### Acute Otitis Media

Children's Mercy Kansas City

Follow this and additional works at: [https://scholarlyexchange.childrensmercy.org/care\\_models](https://scholarlyexchange.childrensmercy.org/care_models)



Part of the [Pediatrics Commons](#)

These guidelines do not establish a standard of care to be followed in every case. It is recognized that each case is different and those individuals involved in providing health care are expected to use their judgment in determining what is in the best interests of the patient based on the circumstances existing at the time. It is impossible to anticipate all possible situations that may exist and to prepare guidelines for each. Accordingly, these guidelines should guide care with the understanding that departures from them may be required at times.

---

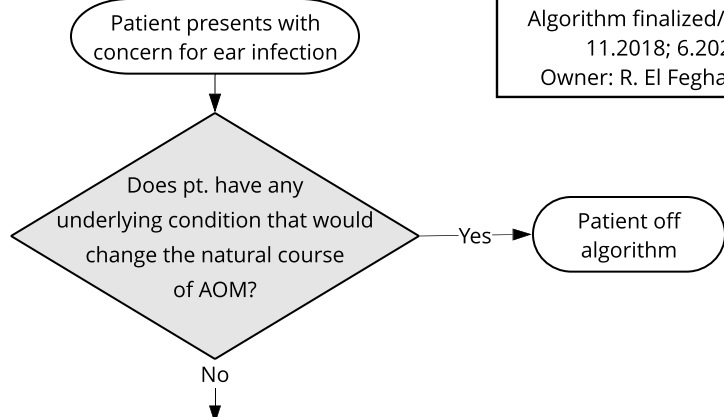
#### Recommended Citation

Children's Mercy Kansas City, "Acute Otitis Media" (2020). *Care Process Models*. 5.  
[https://scholarlyexchange.childrensmercy.org/care\\_models/5](https://scholarlyexchange.childrensmercy.org/care_models/5)

This Care Process Model is brought to you for free and open access by the Quality Improvement and Clinical Safety at SHARE @ Children's Mercy. It has been accepted for inclusion in Care Process Models by an authorized administrator of SHARE @ Children's Mercy. For more information, please contact [hlsteel@cmh.edu](mailto:hlsteel@cmh.edu).

Underlying conditions that may alter the natural course of AOM include, though are not limited to:

- Presence of tympanostomy tubes
- Anatomic abnormalities (including cleft palate)
- Genetic conditions with craniofacial abnormalities (such as Down Syndrome)
- Immune deficiencies
- Presence of cochlear implants

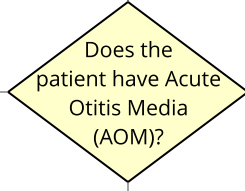


Criteria for diagnosis of AOM:

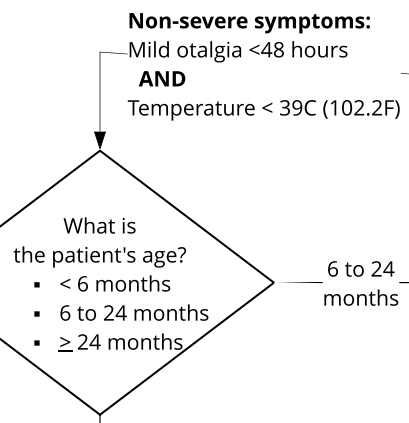
- Middle ear effusion
- **PLUS one** of the following:
  - moderate/severe bulging of TM
  - new onset otorrhea not caused by otitis externa
  - mild bulging of TM and 48 hours of otalgia
  - mild bulging of TM & intense erythema of the TM

Patient may have Otitis Media with Effusion (ear effusion with no signs of infection)  
**No antibiotics recommended**

Assess and treat ear pain (see Table 3 in AAP guideline for Otolgia treatments)



Initiate antibiotics x 10 days



**Otorrhea OR Severe signs/symptoms:**  
Moderate/Severe otalgia  
**OR**  
Temperature ≥ 39C (102.2F)  
**OR**  
Otalgia ≥ 48 hours

Initiate antibiotics x 10 days

Watchful waiting (WW) / Safety-net antibiotic prescription (SNAP) or initiate antibiotics

Link to:  
Children's Mercy Kansas City Outpatient Antibiotic Handbook

**Antibiotic duration for amoxicillin, amoxicillin/clavulanate, cefuroxime, cefdinir, cefpodoxime, cefprozil, and clindamycin:**  
 <2 years of age **OR** severe AOM **OR** chronic AOM **OR** recurrent AOM **OR** TM perforation = **10 days**  
 2-5 years of age with non-severe symptoms = **7 days**  
 ≥6 years of age with non-severe symptoms = **5-7 day**