

Children's Mercy Kansas City

SHARE @ Children's Mercy

Care Process Models

Quality Improvement and Clinical Safety

1-2020

Allergic Reaction in Hem/Onc Patient

Children's Mercy Kansas City

Follow this and additional works at: https://scholarlyexchange.childrensmercy.org/care_models



Part of the [Pediatrics Commons](#)

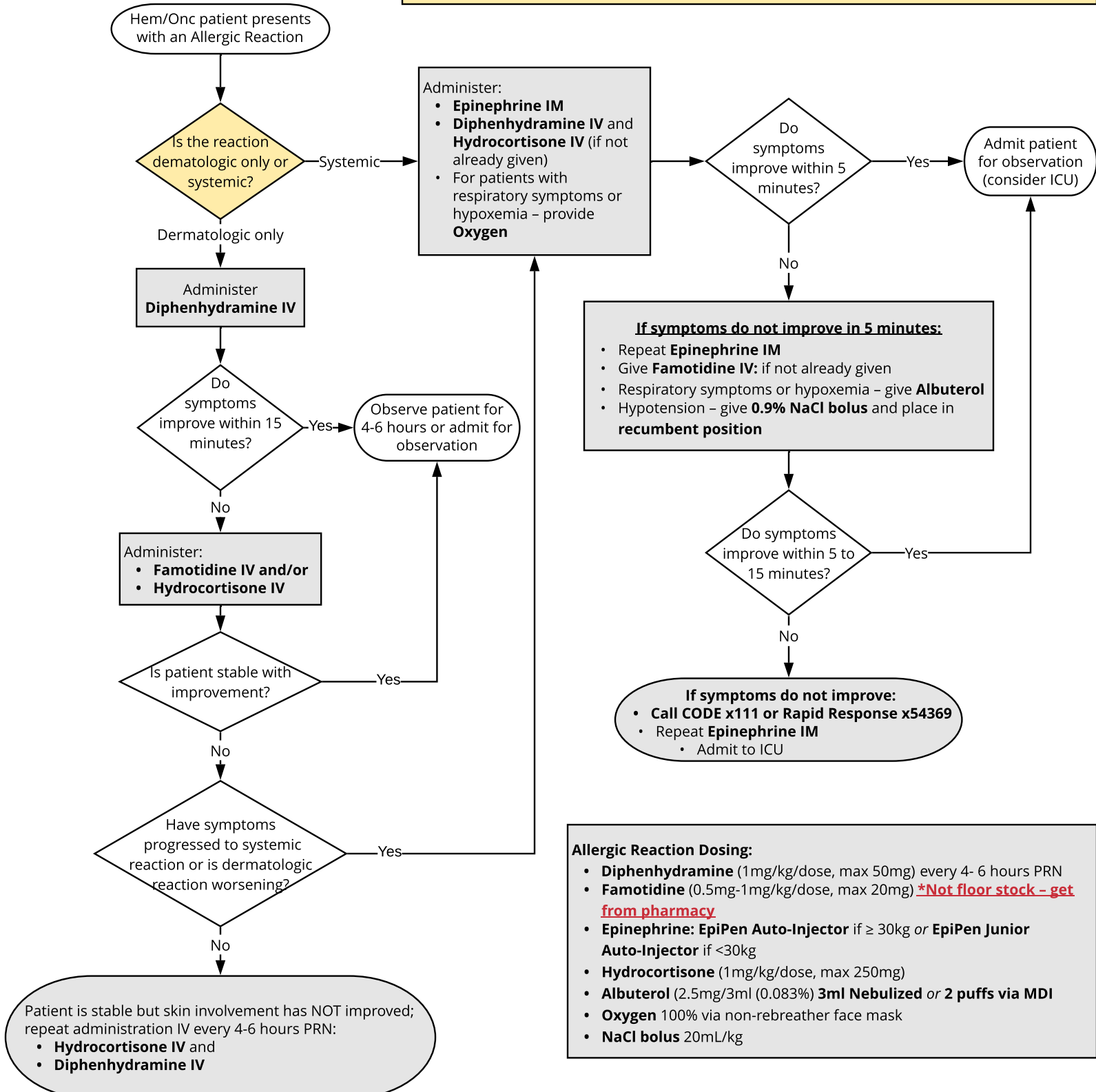
These guidelines do not establish a standard of care to be followed in every case. It is recognized that each case is different and those individuals involved in providing health care are expected to use their judgment in determining what is in the best interests of the patient based on the circumstances existing at the time. It is impossible to anticipate all possible situations that may exist and to prepare guidelines for each. Accordingly, these guidelines should guide care with the understanding that departures from them may be required at times.

DERMATOLOGIC REACTIONS ONLY:

- Sudden and unexpected redness of skin (flushing), itching, hives or swelling

SYSTEMIC REACTIONS

- Respiratory Compromise: dyspnea, wheezing, stridor, hypoxemia, persistent cough
- Dizziness or Hypotension
- Involvement of mucosal tissue (swollen lips, tongue or uvula) or difficulty swallowing or talking
- Persistent GI Symptoms: crampy abdominal pain, vomiting, diarrhea



Allergic Reaction Dosing:

- Diphenhydramine (1mg/kg/dose, max 50mg) every 4- 6 hours PRN
- Famotidine (0.5mg-1mg/kg/dose, max 20mg) ***Not floor stock - get from pharmacy**
- Epinephrine: EpiPen Auto-Injector if ≥ 30kg or EpiPen Junior Auto-Injector if <30kg
- Hydrocortisone (1mg/kg/dose, max 250mg)
- Albuterol (2.5mg/3ml (0.083%) 3ml Nebulized or 2 puffs via MDI
- Oxygen 100% via non-rebreather face mask
- NaCl bolus 20mL/kg