

Children's Mercy Kansas City

**SHARE @ Children's Mercy**

---

Children's Mercy Annual Reports

Who we are

---

2017

## Children's Mercy Hospital Annual Report 2016

Children's Mercy Hospital

Let us know how access to this publication benefits you

Follow this and additional works at: <https://scholarlyexchange.childrensmercy.org/cmh-annual-reports>



Part of the [Health and Medical Administration Commons](#), and the [Pediatrics Commons](#)

---

### Recommended Citation

Children's Mercy Hospital, "Children's Mercy Hospital Annual Report 2016" (2017). *Children's Mercy Annual Reports*. 1.

<https://scholarlyexchange.childrensmercy.org/cmh-annual-reports/1>

This Book is brought to you for free and open access by the Who we are at SHARE @ Children's Mercy. It has been accepted for inclusion in Children's Mercy Annual Reports by an authorized administrator of SHARE @ Children's Mercy. For more information, please contact [hlsteel@cmh.edu](mailto:hlsteel@cmh.edu).



Autumn Nelson | 15 years old | Blue Springs, MO

**For children. For families. For answers.**

Children's Mercy Annual Report 2016



# Working together, answers discovered

Autumn Nelson and her mom, Tiffannie



Autumn Nelson's case is living proof that fostering the unique collaboration between researchers, physicians and surgeons at Children's Mercy can result in a definitive diagnosis and an effective treatment for a child who has been waiting for answers.

Autumn started suffering from uncontrollable movements in kindergarten. After a diagnostic odyssey that took her family from Missouri to Minnesota and back, Autumn was told she has dystonia. She wasn't told a specific type or given any treatment options.

Thanks to genetic testing performed by researchers at the Center for Pediatric Genomic Medicine at Children's Mercy, it only took a few days for Children's Mercy to confirm the exact gene responsible for Autumn's dystonia.

Armed with this information, Children's Mercy neurologists, radiologists and neurosurgeons quickly went to work, presenting Autumn with a new treatment option — deep brain stimulation.

Deep brain stimulation is used to restore normal function for patients like Autumn with movement disorders. Children's Mercy is one of the few pediatric hospitals in the nation to offer the procedure, which was recently approved for use in children.

For Autumn, her experience at Children's Mercy has been life-changing. Today, the chronic muscle spasms she had in her left arm and hand are completely gone.

A sophomore at Blue Springs South High School, Autumn looks forward to everyday tasks her classmates likely take for granted. "I just want to be able to hold a pen again so I can write," she said.

"I used to like art, so I'd like to be able to get back to that, and maybe learn how to play an instrument, the piano or guitar." And drive a car, of course.



2015 BEST PLACES TO WORK

KCBJ selects Children's Mercy as one of the top 10 Best Places to Work in Kansas City (large-company category) for the 10th year in a row.

 **Center for Pediatric Genomic Medicine**  
CHILDREN'S MERCY KANSAS CITY

A study in genome medicine describes how researchers at Children's Mercy cut the time needed for whole-genome sequencing for genetic diagnosis in critically ill infants almost in half. The Center for Pediatric Genomic Medicine at

**Children's Mercy completed the STAT-Seq test in 26 hours, compared to 50 hours, which previously had been the fastest available in the world.**

The **Children's Mercy Contact Center extends its scheduling hours** to improve convenience and access for our patients, families and referring physicians.

Children's Mercy announces the creation of the **Brendan Tripp Elam Transplant Center**, bringing together the collective strengths of our liver, kidney and heart transplant teams to provide the best possible care for children.



FARE selects Children's Mercy as one of **22 centers of excellence** to be inaugural members of the FARE Clinical Network.

July

August

September

2015



Healthy KC, an initiative of the Greater Kansas City Chamber of Commerce, names Children's Mercy as one of 46 **"Certified Healthy KC Companies,"** a designation recognizing efforts to create a workplace focused on health and wellness.



Children's Mercy is honored as the Kansas City Chamber's 2015 **"Champion of Diversity,"** an award recognizing a commitment to embracing diversity in the workplace and community.



Children's Mercy begins offering **Saturday clinics at Children's Mercy Hospital Kansas and Children's Mercy College Boulevard**, continuing the promise to make care more convenient and accessible to families.



The Elizabeth J. Ferrell Fetal Health Center, which supports families expecting high-risk births, announces the **500th birth at the center.**

Children's Mercy names the Black & Veatch Building at 23rd Street and Holmes on the Adele Hall Campus, recognizing a five-year pledge for **\$2.1 million from Black & Veatch** to help the hospital's Center for Pediatric Genomic Medicine expand services to include an increased focus on oncology.



Children's Mercy opens the Innovation Design Lab of the Center for Pediatric Innovation.



Children's Mercy South is renamed Children's Mercy Hospital Kansas to better reflect the comprehensive pediatric care it provides not just to kids in Johnson County, but to children across the entire state.



Children's Mercy and Sporting Kansas City announce a **10-year partnership** that makes Children's Mercy the official health care and sports medicine partner of the professional soccer team. The partnership includes plans to establish a state-of-the-art sports rehabilitation program and facility at the National Training Center under construction near the newly named Children's Mercy Park.

**November**



Tom Curran, PhD, FRS, is named Chief Scientific Officer and Executive Director of the Children's Research Institute.



The 2016 Red Hot Night gala benefiting Children's Mercy shatters previous records, **raising nearly \$1.65 million**, and featured an inspiring talk by Hannah Mountz, 16, the hospital's first heart-transplant patient.

**February**



Children's Mercy hosts the Children's Health Summit, focusing on advancing health care for children across the region. Nearly 200 representatives from health care, public health, academia, government, social service, community and private-sector partners attend.

**March**

For the second consecutive year, **100 percent** of the 2105 graduates of the **Children's Mercy Pediatric Residency Program pass** their board examinations (compared to a national pass rate of 81 percent).



"Inside Pediatrics **Season Two**," the Emmy Award-winning docu-series about Children's Mercy, premieres on KMBC-TV. A special episode, "The Heart of Children's Mercy," aired in February with updates on two heart patients. The special edition also won an Emmy in 2016.

**2016**



The Children's Mercy **Beacon Program achieves certification as a Level III Patient-Centered Medical Home** by the National Committee for Quality Assurance, the highest level of recognition possible for a medical group. The program provides comprehensive care to children with complex, chronic, special health-care needs and their siblings.



For the **fourth time in a row**, Children's Mercy earns designation as a Magnet hospital by the American Nurses Credentialing Center; appraisers described Children's Mercy and staff as among "the best in the nation."

April



Children's Mercy is recognized by U.S. News & World Report as being **ranked in all 10 pediatric specialties** recognized by the magazine, an accomplishment shared by just 25 other children's hospitals.

May

June



Children's Mercy performs its **first simultaneous kidney transplants** and one month later, the kidney transplant program reaches the milestone of **300 transplants since it beginning in 1986**.

**BIG Slick**

The seventh annual Big Slick Celebrity Weekend **raises a record \$1,348,438** for the Children's Mercy Cancer Center.

**Parent Project Muscular Dystrophy**

LEADING THE FIGHT TO END DUCHENNE

Children's Mercy becomes the 11th hospital to be named a **Certified Duchenne Care Center** by Parent Project Muscular Dystrophy. Duchenne Muscular Dystrophy is the most common fatal genetic disorder diagnosed in childhood, affecting about one in every 5,000 live male births.



Randall L. O'Donnell, PhD

## Driven to find answers

Greetings,

Nov. 2016

Children have a remarkable way of asking questions. Their natural curiosity drives them to ask "Why this?" "Why that?" and, perhaps my favorite, "Are we there yet?"

At Children's Mercy, we're just like the children we serve in that respect. We are driven by a natural curiosity and a desire for answers. For children and their families.

And because of the help we receive from so many of you, I must say on behalf of the nearly 250,000 individual children and their families that we served just last year alone, thank you.

We came up with a lot of answers in the fiscal year (2016) we just finished. In fact, it was one for the record books.

- We again ranked among the top children's hospitals by U.S. News & World Report.
- We were awarded Magnet Designation for the fourth time and were told by appraisers that our nursing staff is an extraordinary example of excellence.
- We recorded more than half a million outpatient visits for the first time as families sought care, and answers and hope. Nearly 200,000 of those visits were made to our emergency rooms and urgent care centers.
- We performed more than 20,000 surgeries for the first time, more than three-fourths of them on an outpatient basis.



Taking the best care of the children throughout our community is possible only because of the community.

For more than a century, Children's Mercy has been blessed with amazing community support. This year was no exception: We raised more than \$45 million in philanthropic donations and pledges – another record. A portion went to what we call the "I Love Children's Mercy" Fund. These are resources that are not restricted in the way they are used, but are directed toward the mission of Children's Mercy to care for all children regardless of their families' financial circumstances. These funds provide the hospital flexibility to use gifts to respond quickly to patient needs, to deliver the best clinical and psychosocial care possible and to make research discoveries that change children's lives. Dr. Katharine Berry Richardson, one of our founders, called these "free gifts," free from conditions so she could do what's best for the children.



Participants at the Child Health Summit.

Health care is ever changing, and so is Children's Mercy.

Recognizing how important the community is in helping us fulfill our mission, we did something for the first time this past year. The Child Health Summit in March brought together nearly 200 representatives from organizations dedicated to caring for children. Children's Mercy convened the meeting with folks from health care, public health, academia, government, social service, community and private-sector agencies and organizations. We discussed specific problems, like housing and poverty and nutrition. We set priorities and goals. You'll be hearing more about this from us and our partners.

This year we also formalized our research endeavors with the creation of the Children's Mercy Research Institute. We searched far and wide before recruiting from Children's Hospital of Philadelphia the Institute's first Executive Director and Chief Scientific Officer, Tom Curran, PhD. On the strength of that recruitment and efforts by many of our existing esteemed scientists, we launched efforts to bring additional national talent and grants to the Institute. This work was aided, as always, by significant seed monies contributed by one of Kansas City's most influential philanthropists.



A look back at our highlights is also a look at a list of some of the many families that helped us be successful.

- The Elizabeth J. Ferrell Fetal Health Center, which supports families expecting high-risk births, celebrated the 500th birth at the center.
- The Black & Veatch Building at 23rd and Holmes on the Adele Hall Campus was unveiled in recognition of the company's commitment to the Center for Pediatric & Genomic Medicine and expansion of services to include an increased focus on oncology.



(From left) Alan Gamis, MD, Associate Division Director, Section of Oncology; Randall L. O'Donnell, PhD, Children's Mercy President and CEO; Gerald Woods, MD, Division Director of Hematology, Oncology and Bone Marrow Transplantation; Erin Guest, MD, Hematology/Oncology; and Steve Edwards, Black & Veatch President, Chairman and CEO, at the dedication of the Black & Veatch building, a hub for clinical care, research and teaching.

These are just some of the highlights. A more comprehensive list is on Pages 23-26. But these help show that without the help of our community, without the businesses and families that give their time, talent and treasures, we could not find the answers our children and families so desperately want and need.

Chief among those contributing are our employees. Not only do we have an amazing, diverse group of individuals who come together and work well in a variety of teams every single day, but they put their "money where their mouth is." This past year, 850 of our employees joined the new 1897 Society, a philanthropic society named for the year Children's Mercy was established.

Being a charity and caring for all children regardless of their ability to pay is an important part of our legacy. It takes a lot of work and a lot of careful stewardship to keep our financial house in order in times of uncertain government and commercial policies of reimbursement, increased competition from, in particular, for-profit health care companies, and costs that we have very little control over. And yet, because we employ the best and our drive is to do the best for children and families, we find the answers. Once again, we have received an A+ rating with a stable outlook from Standard and Poors, ensuring sustained confidence from investors and favorable interest rates in credit markets for our not-for-profit work.

I am extremely fortunate to be able to help guide Children's Mercy on its mission. Kansas City and its children and families are fortunate, too, because of all who make it possible.

The never-ending quest for answers is not an easy one. But the children keep asking: Are we there yet?

I can assure them that we won't stop until we are.

Sincerely,

Randall L. O'Donnell, PhD  
President and Chief Executive Officer





---

## Board and Administration

### FY17 Board of Directors

Debbie Sosland-Edelman, Chairman  
Dave Goebel, Vice Chairman  
Elizabeth (Betsy) Braham, Treasurer  
Paul McLaughlin, Secretary

Jon Baum  
Carolyn Davis, MD  
Bill Krueger  
Randall L. O'Donnell, PhD  
Kathy Perryman, MD  
Charles Schellhorn  
Andrew Teigen  
Tom Weir  
Gerald Woods, MD

### Administration

[Randall L. O'Donnell](#), PhD, President/Chief Executive Officer  
[Karen Cox](#), RN, PhD, FACHE, FAAN, Executive Vice President/Chief Operating Officer  
[Sandra A.J. Lawrence](#), Executive Vice President/Chief Administrative Officer  
[Charles C. Roberts](#), MD, Executive Vice President/Executive Medical Director  
[Jo Stueve](#), Executive Vice President/Chief Operating Officer  
[Michael Artman](#), MD, Pediatrician-in-Chief, Senior Vice President  
[Robin Foster](#), Senior Vice President/General Counsel  
[David Cauble](#), Senior Vice President/Chief Financial Officer  
[George W. Holcomb III](#), MD, MBA, Surgeon-in-Chief, Senior Vice President  
[Cheri Hunt](#), RN, MHA, NEA-BC, Senior Vice President/Chief Nursing Officer  
[David Westbrook](#), Senior Vice President, Strategy and Innovation  
[Kimberly Brown](#), Vice President, Audit and Compliance  
[Marshaun Butler](#), Vice President, Children's Mercy Hospital Kansas and Regional Medical Practices  
[David Chou](#), Vice President/Chief Information Officer  
[John DeWitt](#), Vice President, Facilities Management  
[Robin Faulk](#), Vice President, Human Resources  
[Bob Finuf](#), Vice President, Integrated Care Solutions Executive Director  
[Joe Galeazzi](#), Vice President, Medical Administration  
[Laurisa Jackson](#), Vice President, Finance  
[Carol Kemper](#), RN, PhD, CPHQ, CPPS, Vice President, Quality and Safety  
[Genny Nicholas](#), Vice President, Government Relations  
[Jenea Oliver](#), PhD, Vice President, Philanthropy



## Mission

Improve the health and well-being of children by providing comprehensive, family-centered health care and committing to the highest level of clinical and psychosocial care, and to research, academic and service excellence.

## Vision

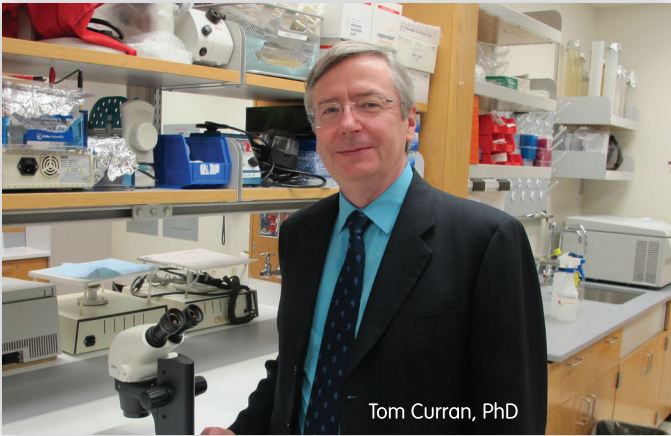
Be a national and international leader recognized for advancing pediatric health and delivering optimal health outcomes through innovation and a high-value, integrated system of care.

	FY 2016	
<b>Inpatient Care</b>	Admissions	14,538
<b>Patient Days</b>	Average Length of Stay	6.1
	Medical/Surgical	5.1
	Intensive Care Nursery	27.1
	Pediatric Intensive Care Unit	6.9
	CM Kansas Patient Care Unit	2.5
	Fetal Health Center	2.5
	Average Daily Census	263.1
	Licensed Beds Available	354
<b>Outpatient Visits</b>	Hospital Clinics	127,903
	CM Kansas Specialty Center	49,023
	CM Northland Specialty Clinics	22,797
	CM East Specialty Clinics	9,403
	CM College Boulevard	16,081
	CM Blue Valley	2,892
	Primary Care Clinics	77,899
	Other	46,288
	<b>Total Outpatient Visits</b>	<b>352,286</b>
<b>Emergency/Urgent Care Visits</b>	CMH Emergency Room	66,814
	CM Kansas Emergency Room	42,409
	CM Blue Valley Urgent Care	21,906
	CM Northland Urgent Care	31,424
	CM East Urgent Care	28,947
	<b>Total Emergency/Urgent Care Visits</b>	<b>191,500</b>
<b>Surgical Procedures</b>	Inpatient	4,230
	Outpatient	15,888
	<b>Total Surgical Procedures</b>	<b>20,118</b>
<b>Transports</b>		5,586
<b>Home Care Visits</b>		3,704
<b>Full-time Employees</b>		7,910
<b>Volunteers</b>		945
<b>Medical Staff</b>		768

SOURCES OF REVENUE	FY 2016	
Patient Care Services		1,179,640,579
Externally Funded Research		11,809,956
Other Revenue & Public Support*		63,701,432
<b>TOTAL</b>		<b>1,255,151,967</b>
<b>USES OF REVENUE</b>		
Bad Debt		29,960,538
Salaries & Benefits		710,978,757
Supplies & Other Expenses		378,492,946
Depreciation & Interest		78,484,737
Other		57,234,988
<b>TOTAL</b>		<b>1,255,151,967</b>

\* Includes Philanthropy and United Way, investment income and additional sources

# Children's Research Institute: A bold vision to help children around the world



Tom Curran, PhD

No family should ever be faced with a heartbreaking question like “What do we do now?” when it comes to their child’s care.

That’s why in July 2015, Children’s Mercy established the Children’s Research Institute, building on a century-long history in pediatric research and declaring a bold vision to find answers for children around the world.

“Everything is coming together,” says Tom Curran, PhD, FRS, CRI Executive Director and Chief Scientific Officer.

Children’s Mercy recruited Dr. Curran in February 2016 after an exhaustive national search. His career includes positions in private industry, with St. Jude Children’s Research Hospital in Memphis, and most recently with Children’s Hospital of Philadelphia (CHOP), where he led distinguished, internationally recognized research in brain development and pediatric brain tumors.

Jessica Mei Yin Ng, PhD, Dr. Curran’s wife, is also a research biologist and a Research Assistant Professor. She is working with Dr. Curran to set up his lab, continue ongoing projects, and develop independent projects for her own grant submissions.

“Children’s Mercy already is doing very credible, high-quality research. Now that research will be supported within the framework of the Children’s Research Institute, which will help researchers achieve their scientific goals,” Dr. Curran said.

Building on existing strengths, including the Genome Center; clinical pharmacology; health services and outcomes research; and innovation in health care delivery will accelerate development of precision medicine at Children’s Mercy.

“We will raise Children’s Mercy from being a truly excellent children’s hospital to one of the top children’s research hospitals, not just in the U.S., but in the world. We want to play on a global scale,” Dr. Curran says.

Children’s Mercy is the place to make that bold vision a reality, especially when considering that research is only as good as the available data and Children’s Mercy is one of the larger pediatric health system in the country. With more than 500,000 patient encounters each year, Children’s Mercy sees complex cases from every state in the nation and more than 35 countries. This patient population and volume will drive the information and data necessary for robust scientific exploration.

“We’ve reached the right size; we have the diversity of expertise; we have a rich patient population and amazing clinical record; and we’ve already made investments in several key areas,” Dr. Curran said.

“Our ultimate objective is to develop the very best research environment that serves the needs of our bosses—the children.”

**In this first year, the Research Institute has become a reality. I’m in place; I’m beginning to build a team; and the really big thing recently is that we received a philanthropic commitment for the first funds to start planning a new research building. In five years, our newly constructed research building will be the envy of the world.** – Tom Curran, PhD



Genomic research holds the key to developing more effective treatments and life-saving cures for children like Isaac, who was diagnosed at 8 months with infantile acute lymphoblastic leukemia. Isaac is pictured here with Erin Guest, MD, Director of the Children's Mercy Cancer Genomic Program.

# Children's Mercy Child Life program achieves another 'first'



Child Life Specialists play a crucial part in care at Children's Mercy.

They are the child development experts who realize children need play even when they're sick. They help little ones understand that "changing your dressings" is about bandages, not a new outfit, and they provide distractions to calm kids' fears during medical procedures.

They are Children's Mercy's Child Life Specialists, critical partners in patient care with expertise in child-friendly language and developmentally appropriate support. And now, they are also nationally recognized for excellence in preparing students for careers in the psychosocial care of children, as the Children's Mercy Child Life internship program has been awarded full accreditation by the Child Life Council.

The Children's Mercy Child Life internship program is one of only five such programs in the country to be so designated, according to Caroline McIntire, MA, CCLS, a Child Life Education and Resource Manager, who coordinates the program.

"This recognition speaks to our clinical excellence in teaching and our depth of professional practice," said Caroline. "It's especially exciting as it establishes a new national standard, and we are one of the first ever to be awarded this prestigious designation. It will be a benchmark that defines high quality, experiential clinical programs in the psychosocial and allied health career fields."

## **A foundation of excellence**

Developed more than 20 years ago as one of the first in the Midwest, the Children's Mercy Child Life program is made up of 47 certified Child Life Specialists on staff — 15 of them former Child Life interns.

The Children's Mercy 15-week internships are highly competitive, too, attracting as many as 70 applicants for the three or four slots available each semester.

"We have long been ahead of the game, thanks to visionary leaders who advocate for the psychosocial support of patients, and to the commitment of our Child Life staff," Caroline said. "Our Child Life internship program is well established, has deep roots and a solid foundation."

**Philanthropic support of nonrevenue generating programs like Child Life sets Children's Mercy apart and ensures families receive the very special care our community has come to know and love.**





# Children's Mercy earns fourth Magnet designation



Jasma Ellis, RN, APRN, is among the 80 percent of our approximately 2,800 pediatric nurses with an advanced nursing degree.

Magnet® designation is America's gold standard for nursing excellence and quality patient care. Children's Mercy struck gold for the fourth consecutive time in April 2016.

"Children's Mercy has an amazing team of more than 2,800 nurses," said Cheri Hunt, MHA, BSN, RN, NEA-BC, Senior Vice President for Patient Care Services and Chief Nursing Officer. "Earning Magnet designation demonstrates we've built a strong culture that allows our nurses to practice and grow professionally so they can meet and exceed Magnet standards day in and day out."

Magnet status is the "seal of approval" for a medical center's overall quality and culture of empowerment, pride, respect, teamwork and integrity — not just for nurses but for the entire staff.

Fewer than eight percent of the country's 6,000 hospitals meet Magnet's stringent and comprehensive standards even once, and fewer than four percent have achieved more than three consecutive designations.

Children's Mercy became the first Magnet hospital in Missouri or Kansas in 2003. Achieving Magnet redesignation is even more rigorous, because the bar is set higher. Children's Mercy had to provide extensive documentation to show how we've maintained or improved standards in 35 focus areas since the previous Magnet designation.

## Donors advance nursing through scholarship gifts

**Nurses, in my opinion, are the key to civilization.**

— Ron Miller, 11

No one could argue with young Ron Miller when he and brother Calvin, 9, helped present the Daniel Miller Nursing Scholarship in memory of another brother they never had the chance to know.

A sale on tissues would have been a big success at the Children's Mercy Nursing Scholarship Awards breakfast. About 250 attendees heard poignant and inspiring stories from individuals, families and businesses whose endowed and non-endowed philanthropic gifts funded scholarships worth \$110,000 for 64 recipients.

A few excerpts:

### **Sam Meers, presenting the Michael Meers Memorial Scholarship:**

"We spent 97 days at Children's Mercy with our son, Michael. What made that experience special was the nurses ... their caring and passion, their intuition to understand what a child needs for comfort — even when the child can't express it. But underpinning all that is education, which is why we give this scholarship,"

### **Andrew Gustafson, presenting the Gustafson Pay It Forward Scholarship:**

"My wife, Megan, received the Children's Mercy Shawsie Branton Nursing Scholarship twice when she was going through school. We wanted to help someone else who's working so hard to further their education — to pay it forward."

### **Merari Rubio, receiving the Spirit of Nursing Scholarship:**

"I will use the Spirit of Nursing Scholarship to go on to school to join the great community of nurses at Children's Mercy. This is truly an honor."

A record number of Children's Mercy employees — 160 — applied for 64 donor-funded scholarships. New scholarships presented were the Alyssa Lane Hutchens Critical Care Transport Scholarship, the Coaches Collective International Nursing Scholarship and the McDougald Family Nursing Scholarship Endowment.

The scholarships help nurses continue their education and advance their knowledge and clinical skills. Children's Mercy reached a nursing milestone in 2016: 80 percent of our nurses now hold BSN degrees or higher — reaching a 2020 goal four years early.



Charles C. Roberts, MD, the Schellhorn Family Endowed Chair in Medical Administration, with Charles and Lisa Schellhorn; Cheri E. Hunt, RN, BSN, MHA, NEA-BC, the Bernell Hevner O'Donnell, RN, Endowed Chair, with Dr. Randall L. and Melva O'Donnell; Karen S. Cox, PhD, RN, FAAN, the V. Fred Burry, MD, and Sandra Hobart Burry Chair in Nursing Advocacy and Leadership, with Dr. V. Fred and Sandra Burry; and Timothy L. Bennett, MD, the Elizabeth J. Ferrell Chair in Maternal Fetal Medicine, with James E. and Elizabeth J. "Zibbie" Ferrell

## Nursing endowed chairs make history

The Winter 2015 Investiture made Children's Mercy history when nurse leaders were honored among the four endowed chairs. For nearly half a century, endowed chairs funded by generous, forward-thinking donors have helped Children's Mercy attract and retain world-class researchers and health care leaders. Children's Mercy has 19 endowed chairs and a goal to have 30 by 2020.

The two endowed chairs created specifically to advance the nursing profession and their first chairholders:

- V. Fred Burry, MD, and Sandra Hobart Burry Chair in Nursing Advocacy, held by Karen Cox, PhD, RN, FAAN, Executive Vice President and Chief Operating Officer

Fred Burry, MD, and his wife, Sandra, established the first nursing-related endowed chair at Children's Mercy. It recognizes the crucial contributions nurses make to clinical care, research, advocacy and leadership in pediatric medicine. Dr. Burry was a respected leader at Children's Mercy in a career spanning nearly half a century. Sandra Burry is an associate member of the Children's Relief Association. Two of the Burry's three daughters and two granddaughters chose nursing careers.

- Bernell Hevner O'Donnell, RN, Endowed Chair – Chief Nursing Officer, held by Cheri Hunt, RN, BSN, MHA, NEA-BC, Senior Vice President for Patient Care Services and Chief Nursing Officer

Children's Mercy President and CEO Randall L. O'Donnell, PhD, and his wife, Melva, established this endowed chair to honor his mother's passion for pediatric nursing, patient care, leadership and education. She pioneered psychosocial care for hospitalized children, and this influenced Dr. O'Donnell to become a nationally recognized advocate for pediatric psychosocial care.

Also invested as endowed chairs:

- Timothy Bennett, MD, Medical Director of the Elizabeth J. Ferrell Fetal Health Center: *Elizabeth J. Ferrell Chair in Maternal Fetal Medicine*
- Charles C. Roberts, MD, Executive Medical Director and Executive Vice President: *Schellhorn Family Endowed Chair in Medical Administration*

Other endowed chairholders and chairs at Children's Mercy:

- Michael Artman, MD: *Joyce C. Hall Distinguished Professor in Pediatrics*
- James F. Daniel, MD: *James F. Daniel, MD, Endowed Chair in Liver Care*
- Kathy Goggin, PhD: *Ernest L. Glasscock, MD, Chair in Pediatric Education and Research*
- George W. Holcomb III, MD, MBA: *Katharine B. Richardson Chair in Pediatric Surgery*
- J. Steven Leeder, PharmD, PhD: *Marion Merrell Dow/Missouri Chair in Pediatric Clinical Pharmacology*
- James E. O'Brien Jr., MD, FACS: *Jerry Smith Chair in Pediatrics*
- Bradford W. Olney, MD: *Dr. Rex and Lillian Diveley Chair in Pediatric Orthopaedic Surgery*
- Girish S. Shirali, MBBS, FASE, FACC: *Melva and Randall L. O'Donnell, PhD, Chair in Pediatric Cardiology*
- James D. St. Louis, MD: *Joseph Boon Gregg/Missouri Endowed Chair in Cardiac Surgery*
- William E. Truog III, MD: *Sosland Chair in Neonatology Research*
- Shui Qing Ye, MD, PhD: *William R. Brown/Missouri Endowed Chair in Medical Genetics and Molecular Medicine*

Currently vacant chairs:

- Dee Lyons/Missouri Endowed Chair in Pediatric Genomic Medicine
- Marion Merrell Dow/Missouri Chair in Pediatric Medical Research
- Marion Merrell Dow/Missouri Chair in Pharmacogenetics
- Thomas Holder/Keith Ashcraft Chair in Pediatric Surgical Research

# Small Change – Big Difference promotes family giving



Children’s Mercy went “hog wild” with Small Change – Big Difference, a philanthropic campaign featuring piggy banks encouraging families to inspire the next generation to give back to the community. Six-foot-tall pigs attracted kids at area festivals, Sporting Kansas City soccer games and other events throughout the summer.

To encourage family giving, the new online Children’s Mercy Birthday Party site allows a child — with adult help — to host a birthday party to benefit our patients. A virtual Gift Gallery allows the birthday boy or girl to create a Wish List of toys, books, mobiles, arts and crafts and other resources the Child Life team uses to make the hospital stay a happier and more comfortable experience.

The host family receives a party kit that includes an adorable porcelain piggy bank. Invited guests go online, find the child’s party and make donations in lieu of buying birthday presents.

Small Change – Big Difference revives a historic Kansas City giving tradition that dates to 1897. That summer, Children’s Mercy was founded by Katharine Berry Richardson, MD, and her sister, Alice Berry Graham, DDS, with a single rented bed for a sick and abandoned child. One of the earliest gifts came not from local titans of industry, but from a group of little girls in Greeley, Kan., who sent pillows, sheets and blankets to make her bed cozy and warm.

For nearly 120 years, children throughout the region have rallied around Children’s Mercy as a non-profit pediatric hospital so every sick or injured child can receive the best care, regardless of a family’s ability to pay. School children held “penny drives” and filled special tins and piggy banks with small change they collected.

A larger-than-life-sized “piggy bank” is the Wild Boar bronze sculpture on the Country Club Plaza. For more than half a century, children and adults have clamored to rub its big bronze nose for luck as they deposit coins to help patients at Children’s Mercy. A smaller replica of the sculpture greets visitors in the lobby of our Adele Hall Campus on Hospital Hill.



This summer, 6-foot piggy banks attracted attention at local events and helped raise awareness for the hospital’s nonprofit status and for a new giving campaign, Small Change – Big Difference.

Dawn Wolff, Senior Director of Strategy and Initiative Development (left), with her mother, Darlus Wolff, who is a member of the Children's Mercy Gift Processing team, with Isabella, 8, and Alexis, 4.



### **Proud employee, grateful parent gives back**

"As the head of Children's Mercy's Strategic Planning Department, I understand the tremendous impact an individual gift can have on Children's Mercy achieving its vision of being a leader in advancing pediatric health. However, it's as a grateful parent that I've personally experienced the significance of what donating to Children's Mercy can mean for a child and a family.

"At a month old, my first child, Isabella, experienced a serious cardiac issue and was in immediate need of extraordinary pediatric services. Because others had chosen to give to Children's Mercy, the hospital was prepared and ready to care for Isabella and she survived her crisis. Children's Mercy continued to care for her over the years and a year ago she underwent a successful cardiac procedure to correct her heart.

"Now, she is a healthy and active 8-year-old girl and is Children's Mercy's biggest fan. Isabella and her 4-year-old sister, Alexis, not only look forward to sharing their savings with Children's Mercy to help other kids, they often say they can't wait to work at the hospital just like their Mommy and Grandmother.

"It's as a proud employee and grateful parent that I give back to Children's Mercy in the form of hard work and dedication to the organizational mission and also monetarily to ensure the mission remains sustainable. My family and I truly appreciate how important it is to have a world-class children's hospital in our own back yard." – Dawn Wolff

# With thanks and appreciation



With 119 years of generous community support, Children's Mercy has continually grown and elevated care to become one of the nation's top-ranked pediatric medical centers. Thank you for sharing our concern for the health and well-being of children. You make it possible to provide expert care for every single child who comes through our doors, regardless of a family's ability to pay.

The following list recognizes and honors Children's Mercy donors whose giving totaled \$10,000 or more in fiscal year 2016. Due to space constraints, we could not list here the name of every generous person or organization who supports children and families with gifts of time and treasure. Please know every gift makes a difference in the lives of so many here and around the world. We are humbled by your caring hearts and grateful for your support. Thank you.

For more information about how to be involved, see: [www.childrensmercy.org/give](http://www.childrensmercy.org/give)

J.R. Albert Foundation | Alex's Lemonade Stand | All American Classics, Inc. | All Systems Designed Solutions, Inc. | Karissa and Rob Alumbaugh | American Century Investments Foundation | Americo Life, Inc. | Dr. Laura Fitzmaurice Amick and Mr. Mickey Amick | Mr. Timothy Anderson | Mr. and Mrs. Bryan J. Andres | Anesthesia Associates of Kansas City | Anonymous (15) | Mr. and Mrs. Jeffrey A. Anthony | Matt and Ann Anthony | Aon Corporation | Aristocrat Motor Company | Charlotte F. Arrowsmith Trust | Automobile Dealers Association of Greater Kansas City | B.F. Ascher & Company, Inc. | Bank of America Charitable Gift Fund | Bank of Oklahoma | Laura McKnight and Clay Barker\* | Mr. Paul A. Barnds and Dr. Shawn R. Sabin | Mr. and Mrs. G. Kenneth Baum\* | Sarah and Jon Baum\* | Mr. and Mrs. Bryan J. Beaver | Beer Transportation, Inc. | Mrs. Susan E. Berndt | Jo and Dan Beutler | Lester R. Birbeck Charitable Trust | Black & Veatch Foundation – Building a World of Difference\* | Clare and Nick Blasi | Charles E. and Jeanne A. Bleakley | Marion and Henry Bloch Family Foundation | Blue Valley Southwest High School | The Benevity Community Impact Fund | Vicki and David Block | BMO Harris Bank N.A. | W.J. Brace Charitable Trust, Bank of America, N.A., Trustee | Braden's Hope | Roberta D. Harding and William F. Bradley, Jr.\* | R2 B4 Bramlage Family Foundation | Mrs. Mary S. Branton | Bresky Foundation | David Brinkerhoff and Daniel Meiners | Mr. Josh J. Britton and Ms. Jennifer Schroeder | Kimberly S. Brown | Mr. and Mrs. Michael W. Brown | Mr. and Mrs. Herbert C. Buchbinder | Mr. and Mrs. Eric J. Buer | Buhr's Trucking | Bukaty Companies | Mr. and Mrs. Michael J. Bukaty | Burns & McDonnell Engineering | Dr. Fred and Sandra Burry\* | Joanne and Gene Cable | Cable-Dahmer Automotive Group | C.H. Robinson International, Inc. | Jedd & Dara Canty | Carpathia Foundation | Carthage Area United Way | Mr. and Mrs. Tom Cartmell | The Jake Cavanaugh Foundation | Peter M. Cavanaugh | Cerner Corporation | Children's Relief Association\* | Child's Play | Coaches Collective International | Coleman Family Foundation, Inc. | Commerce Bank of Kansas City, N.A. | Commonwealth Charitable Fund | CommunityAmerica Credit Union | Blish and Michael ConnorThe Container Store | Continental Title Company | Mr. and Mrs. Thornton Cooke, II | Mr. and Mrs. Tim Cooley | Jared Coones Pumpkin Run | Cordes Family | Louetta M. Cowden Foundation, Bank of America, N.A., Trustee\* | Karen S. Cox, RN, PhD | Dr. Sherralyn and Mr. Harold Craven | Crestwood Equity Partners | Cross Foundation, Inc. | Pamela Miller and Michael Cummings | Annette and Tyler Cundith | Roderick J. and Jo Anne Cyr Foundation | William A. Dann\* | Dr. William Daniels | Mr. Bryan David | Delta Dental | DEMDACO | Pamela A. Dennis | The Deramus Foundation | Lori and Clayton Dickey | Mrs. Ann K. Dickinson | Warren and Bonnie Donovan Charitable Fund | Jennifer and Dow Draper | DST Systems, Inc.\* | J. E. Dunn Construction Group Inc.\* | Terry and Peggy Dunn | Mr. and Mrs. William H. Dunn, Sr.\* | Laura and David Eckman | Alan Edelman and Deborah Sosland-Edelman | Cathy and Tom Edwards | The Elle Foundation | Empower Retirement | Enright Foundation, Inc.\* | Jerry and Rayla Erding | Mr. Joseph J. Euteneuer and Ms. Colleen E. Dougherty | F.G.F. Company | Farmers Electric's Area Youth Benefit Fund, Inc. | Mr. and Mrs. Buford L. Farrington | Mr. Jonah Feldstein | Mr. and Mrs. William J. Fellows | Melanie and Mike Fenske | Elizabeth J. and James E. Ferrell\* | Ferrellgas, Inc. | First Downs for Down Syndrome, Inc. | Ed and Louise Fleetwood\* | Mrs. Jeanne Foster | Mr. and Mrs. Robin V. Foster | Francis Family Foundation\* | Karen and Sam Freitag | Fresh Farms | Mabel and Joseph Friedman Charitable Trust, Bank of America, N.A., Trustee | Friend Logistics | Sandra and Gregory Galvin | Garmin International, Inc. | Dr. and Mrs. John Gatti | General Electric Company | George Shaw Construction | Claire Giannini Fund\* | Dana and Jeff Gifford | Give Hope Back | The Glasnapp Foundation | Mr. and Mrs. Elliott J. Glass | Penny and Dan Glass | The Goebel Family | Mr. and Mrs. J. Brett Gordon | The Anne Goss Foundation | Arvin Gottlieb Charitable Foundation, UMB Bank, n.a., Trustee | Grandview Christian Church | Great-West Life & Annuity Insurance Company | Trent and Julie Green | Randy and Carla Griffin | Louis H. Gross Foundation, Inc. | Mr. Donald J. Hall\* | Hall Family Foundation\* | Hallmark Cards, Inc.\* | Hamilton Roddis Foundation | Mr. and Mrs. George E. Handy\* | Hartley Family Foundation | Harvest Ball Society | Joyce and Jack Hayhow | Health Care Foundation of Greater Kansas City\* | Heartland Combined Federal Campaign | Mr. and Mrs. Robb Heineman | Mr. and Mrs. Joseph Hemmer | Mr. and Mrs. Daniel R. Henry | Mr. and Mrs. Bradley E. Hewlett | Mark and Cindy Hill | HMN Architects, Inc. | Hoffman Family Foundation | Dr. and Mrs. George W. Holcomb, III | Amy and Paul Holewinski | Holmes Murphy & Associates Inc. | Mr. Ronald Hoogenboom and Dr. Betsy Kantor-Hoogenboom | Hoops For Hope USA Inc. | Hopkins Foundation | Gregory W. Hornig M.D. and Elizabeth Goddard Ph.D. | Hudson Insurance Group | Dr. and Mrs. John D. Hunkeler | Judy and Graham Hunt\* | Hyundai Hope on Wheels | The Illig Family Foundation | Intouch Solutions | I-Rok Foundation | Jay and Kelly Jacobs | John and Trudy Jacobson | Jewish Community Foundation of Greater K.C. | Jimmy John's Franchise, LLC | Kansas City Region Toyota Dealer Association | Mr. and Mrs. Brooke L. Kantor | The Family of Dr. Julius and Marjorie Kantor | Ewing Marion Kauffman Foundation | Muriel McBrien Kauffman Foundation | KC Southern Industries, Inc Matching Gifts Fund | Bonnie and Jerry Kelly | William T. Kemper Foundation\* | David Woods Kemper Memorial Foundation\* | William T. Kemper Charitable Trust, UMB Bank, n.a., Trustee | Debbie and Whitney Kerr, Jr. | Kiewit Companies Foundation | Dr. Jane Knapp | Kohl's Department Stores\* | KPMG LLP | William and Rebecca Krueger | Mr. and Mrs. Jayson A. Kuti | Landmark Bank | Landy Family Foundation | Lansing Trade Group, LLC | Mr. Charles Lapke | Dr. and Mrs. John T. Lask | The Lattner Family Foundation | Dr. and Ms. Willie E. Lawrence, Jr. | LegacyTree Foundation | Jean, Jack, and Mildred Lemons Charitable Trust | Michele Lenderman | Liberty Fruit Golf Tournament\* | Light Around The World (L.A.W.) Foundation Fund | Irven E. and NeVada P. Linscomb Foundation Fund | The Lockton Family | Mazie and Bob Long Family | Carrie J. Loose Trust, Bank of America, N.A., Trustee | Ludwikoski & Associates, Inc. | Mr. and Mrs. Philip J. Ludwikoski | LVT Trucking, Inc | Fred and Dee Lyons\* | Lytle Construction, Inc. | Mr. and Mrs. Rob A. Lytle | M. Bruenger & Company, Inc. | Edward G. and Kathryn E. Mader Foundation\* | The J. E. and L. E. Mabee Foundation, Inc.\* | Judi and Rich Mahaley | Majestic Franchise, Inc. | Kristin Malfer & Associates | Kristin and Mike Malfer | Marion Merrell Dow Donor Advisory Fund\* | The Lordi Marker Family Foundation | Anita and Bary Marquardt | Mr. and Mrs. Henry J. Massman IV | Beth and Pat McCown | McCownGordon Construction | Felisha and Mark McDougald | William G. McGowan Charitable Fund |

Frederick and Mary McCoy Foundation\* | Jan and Mike McGraw | Paul and Jonalee McLaughlin | John J. McManus | Dr. Douglas S. McNair and Mrs. Cece Stadler-McNair | Mr. and Mrs. Fred L. Merrill, Jr. | Mrs. Virginia Merrill | Merriman Family | MHC Truck Leasing, Inc. | Miller Nichols Charitable Foundation\* | Midwest Transplant Network | Jennifer and David Mitchell | MLB Advanced Media, L.P. | Morgan Family Foundation | Bill Mounkes Charity Golf Fund | Mr. and Mrs. Gary L. Muller | Mrs. Phyllis J. Murphy | Tom Murphy Memorial Fund | National Christian Foundation | Dr. and Mrs. Kenneth S. Nelkin | Network For Good | New York Community Trust | Jeannette T. Nichols\* | Northland Sonic Drive-Ins | NPC International, Inc. | Mr. and Mrs. James B. Nutter, Jr.\* | James B. Nutter and Annabel Nutter\* | Dr. James E. O'Brien and Dr. Lina O'Brien | Dr. and Mrs. Randall L. O'Donnell\* | OdysseyRe Foundation | Dr. Scott and Andrea Olitsky | Dawn and Brad Olney | Richard H. and Charlotte G. Orear Charitable Foundation | I.A. O'Shaughnessy Foundation | Mr. and Mrs. Gerald E. O'Shaughnessy | Dominic L. Passantino Memorial Foundation | Thom Pearson | Mr. and Mrs. W. Keith Pence | The David and Krista Peterson Family Foundation | Ansara and Jon Piebenga | Pie Five Pizza Co. | Gloria and Nick Pizzichino | Mr. and Mrs. Philip K. Polkinghorn | Nancy and Randy Pope | Harry Portman Charitable Trust, UMB Bank, n.a., Trustee | Sam Price Family Foundation | Michelle and Tim Prier | Project Linus | Q104 - Steel City Media | Rally Point Capital, LLC | Tom and Louise Reichl | Residential.Com, LLC | J.B. Reynolds Foundation | Mr. and Mrs. George H. Richter | Mrs. Loretta D. Riss | Mike and Nancy Roark | Cristy and Charlie Roberts | Mr. and Mrs. Bret A. Rolig | Blanche and Ira Rosenblum Foundation | Royals Charities, Inc. | The Family of Gerean Rudnick | Dr. and Mrs. Colin A. Ruff | Sarli Family Foundation | Lisa and Charlie Schellhorn\* | Victor E. and Caroline E. Schutte Foundation, Bank of America, N.A., Trustee\* | Jim and Kelli Schwartz\* | Mr. and Mrs. Thomas M. Scott\* | Scottish Rite Childhood Language Disorders Clinic\* | Seaboard Corporation | Selden Trucking, Inc. | John and Marny Sherman | Shire Pharmaceuticals | Silpada Designs | Simonson Family Charitable Foundation | Charlotte Simonson | Kenneth L. and Eva S. Smith Foundation | Smithfield Farmland | The Sosland Foundation\* | Mr. and Mrs. Morton I. Sosland\* | Mr. and Mrs. Neil N. Sosland\* | South Mill Mushroom Sales, LP | John W. and Effie E. Speas Memorial Trust\* | Victor E. Speas Foundation, Bank of America, N.A., Trustee\* | Speedy Car Wash | Spirit of Children sponsored by Spirit Halloween | Sports Radio 810 WHB | Mr. Paul E. Stewart | Stouse, Inc. | Jo and John Stueve | Sunderland Foundation\* | Mr. and Mrs. Dan Sutera | JJCTM Foundation - John W. Sutherland | Kathy and Steve Swatek\* | Target Corporation | TC Transport Inc. | Thrivent Financial | The Title Family Foundation | C. W. Titus Foundation | Tom Lange Company, Inc. | Tour de BBQ, Inc. | Earl and Elizabeth Toutz Charitable Trust | Tradebot Systems, Inc. | Mr. and Mrs. Montie U. Tripp\* | Truist | Truman Heartland Community Foundation | Robert and Cynthia Tucci | Courtney S. Turner Charitable Trust, John Mize and Bank of America, N.A., Trustees | Turner Construction Company Foundation | Mr. and Mrs. Thomas J. Turner III | United Community Fund of Neosho Area | United Way of Greater Kansas City\* | United Way of Greater St. Joseph, Inc.\* | United Way of Paola, Kansas, Inc. | Unlimited Logistics LLC | Frank and Ann Uryasz | Joseph and Marjorie Vandepopuliere | Lauren and Jared Vavroch | VML Foundation | Waddell & Reed Financial, Inc. | Mr. and Mrs. Robert F. Walker | The Walsh Family Foundation | Adelaide C. Ward\* | David H. Westbrook\* | Mr. and Mrs. Eric Westphal | Will Rogers Motion Picture | Pioneers Foundation\* | Wilk Family Philanthropic Fund | Mr. Jeffrey M. Wolfe | Wyandotte Health Foundation\* | \*Donors whose cumulative gifts or pledges have reached or exceeded \$1 million.

**Legacy Honor Roll Members** Adrienne Adam | Mr. and Mrs. Charles T. Adams | Estate of Ruth Calmese Ahring | Mrs. Nina M. Alexander | Josh and Kate Allen | David and Mary Ann Amos | Fred E. and Lillian A. Angle | Joan C. Armacost Trust | Christopher and Dana Arth | Rilye S. Ashby | Mr. and Mrs. Scott F. Austin | Elizabeth B. Avery Trust | Thomas R. Bailey Trust | Brett Lee Ballard | Sue Ellen Balzer | Laura McKnight and Clay Barker | Ann Barrack Irrevocable Trust | Mr. and Mrs. James Bartimus | Homer L. Bartling | Henry Basler | Joyce Darlene Batterson | John C. Baumann | Anna Beldner | William F. Bell, M.D. | Mary Bennett Trust in memory of Paul Bennett | Marilyn Moore Benson | Mr. and Mrs. Bradley A. Bergman | Mr. and Mrs. Charles J. Berkel | Francis M. Bernardin Trust | Beverly Arnold and John Biagioli | Ruth and Alfred Biggs, MD | Bertie B. Bishop | Menefee D. Blackwell | Eguene and Opal (Pat) Blake | Mr. and Mrs. Charles E. Bleakley | Leon E. Bloch, Jr. | Sam and Laurentine Bolden | Estate of Glenn T. Boyer | Mary Shaw Branton | Stephen R. Brayton | Gracia G. Bremer | Esther J. Bronson | Jonathan and Catherine Brouse | Saurine and Eugene Brown | J. D. Browning | James M. Burcalow | Jessie J. Burroway Charitable Fund | Dr. V. Fred and Sandra Burry | Joseph B. and Helen E. Butler | Elsie Cantrell in memory of Ooch Cantrell, Jr., MD | Ooch Cantrell, Sr. | Mary Esther Carroll | Kathy L. Castro | Merle Chaney | Ms. Ruby Lee Chaney | Mr. and Mrs. Carl Chinnery | Mr. Herbert H. Christensen | Janice J. Clark | Mrs. Orville A. Claunch | Ms. Helen Frances Clevenger | Jack W. Coffey | Mary Cohen Trust | Susan Goldberg Cohen | Marilyn L. Colwell | Blish and Michael Connor | Linda K. Conroy | Linda D. Cooley, MD | Mary and Everett Corwin | Helen M. Cox | Karen S. Cox, RN, PhD | Dr. Sherralyn and Mr. Harold Craven | Geneva Cravens | John S. and Betty A. Crawley | Richard B. and Laura S. Cray | Georgia Grant Croft | George W. Crum | Pamela Miller and Michael Cummings | Allen L. Cunningham Unitrust | Paul S. Curtis | William A. Dann | Charlotte L. Davis | John C. and Jane Reusser Davis | Estate of Reba E. Davis | Marion M. Decker Trust | S.D. and Isadore DeLappe | Mrs. Georgia E. Dennis | Minnie S. Denslow Trust | Earl J. Deubach | Rita M. and Earl E. Dickmeyer Trust | Anna Ruth Domann | Orena D. Dorsch Trust | U. James Dotson Estate | Ian Drake | Mr. Robert W. Drury III | Elke M. Dunlap | Mr. and Mrs. William H. Dunn, Sr. | Terry and Peggy Dunn | Alan Edelman and Deborah Sosland-Edelman | Mrs. Bernice Eisen | Helen G. Elias Trust | Paul Elliott Estate | Frances A. Caldwell Ervin Trust | Nona O. Evans | Mark J. Dehner and Susannah Evans | Ralph W. Eylar | Estate of Edward J. Facto | Charlotte Thomas Faeth Charitable Remainder Unitrust | A.J. Falcone | Preston T. Fine | Ed and Louise Fleetwood | Betsey S. Fletcher | Estate of Marjorie Foley | Dr. Fred D. Fowler | Mrs. Helen Knaus Franklin | Mrs. Richard Frontman | Judy and Randy Frueh | The Geraldine V. Fulcher Trust | Marie Fulkerson Irrevocable Trust | Evelyn M. Gale | Paul and Sondra Gale |

Myron L. and Louise Stam Garfinkle | David and Vicki Garrett | Estate of Mildred M. Geist | Edith F. George | Mrs. Barbara Gerson | Bob and Alissa Glaser | *Essie L. Glasscock Revocable Trust* | Christine and James Glenski | Mr. and Mrs. Frederick M. Goodwin, Jr. | Linda S. Goodwin | Dr. and Mrs. Rengasamy Gowdamarajan | Paul J. Graham | Bill and Mary Grant | Eleanor V. Gray | Margaret Greene Trust | Virginia P. Greenlease Estate | Lewis and Laura Gregory | Robert and Laverne Griner | Charlotte R. Gumowitz Trust | Minerva Gundelfinger Trust | Mark and Amanda Haas | Dr. and Mrs. Fred K. Hall | Dr. and Mrs. Robert T. Hall | Frederick F. and Dorothy R. Hall Trusts | Melvin and Frances Hall | Mr. and Mrs. Donald J. Hall | The Herbert F. and Linda Hall Trust | Charlotte J. Hamilton | Weymouth and Laurence Hanna | Cleda A. Hanneman | Mr. Lloyd Harris | William P. Harsh and Margaret N. Harsh | Amy Hart | Kathryn and Michael Harvel | Frances H. Havens | Joyce and Jack Hayhow | Hazel G. Haynes | Mrs. Orval L. Haynes | George A. Heist Trust | Theodore and Marjorie Helmer Family Trust | Mrs. Betty L. Henson | Ms. Lucile Henson | Dr. and Mrs. Scott Herre | Lawrence N. Hicks Irrevocable Trust | Mr. and Mrs. Thomas M. Higgins III | Leslie K. High | Alta Mae Knoop | Chuck and Ellene Hoffman | Mrs. Sara Hofheimer | Dr. and Mrs. George W. Holcomb III | Dr. and Mrs. Thomas M. Holder | William G. and Ruth A. Hoppen | Dr. Gerald E. and Dorothy Housh | Dr. and Mrs. Marius M. Hubbell, Jr. | Mr. and Mrs. David H. Hughes | Elizabeth A. Hull | Dr. and Mrs. John D. Hunkeler | Judy and Graham Hunt | Albert E. and Vita B. Hylton | Ms. Evelyn Illsworth | John and Vergie Irvin | Anna Elno Irving Trust | Ada H. and Louise A. Jaccard Trust | Walter Jaccard Trust | Robert F. Jackson, Jr. and Francis L. Jackson | Fern P. Jameson | Estate of Vonda Flo Jenkins | Clydean Johanson | Leslie H. Johanson | Ms. Mattie Johnson | Eric L. Jones Estate | Lillian A. Jones | George Cook Jordan, Sr. | Mary Caroline Jordan | Don Kahan | Robert B. Kahn Trust | Dr. Julius Kantor | Dr. and Mrs. Ralph E. Kauffman | Drs. Kathleen A. Neville and Gregory L. Kearns | Arthur E. Keller | Ms. Marie Kellogg | Estate of Richard Gregory Kent | Day and Whitney Kerr | Debbie and Whitney Kerr, Jr. | Helen Beatrice Keuhn | Dr. and Mrs. Howard W. Kilbride | David and Terrie Kincade | Jonathan Klem | Judi and Elvin Knight | Estate of Charles H. Koslowsky | William L. and Helen J. Krause | James C. and Dixie C. Kreider | Dr. Prakash Kulkarni | Ms. Emma Kumpf | Dorothy D. LaClair Memorial Trust | Joe and Lenore Lambert Foundation | Jane Lampo | James Bell Lapsley Trust | Arthur F. Larson and Leona Schenewark Larson Endowment Fund | William L. Lee | Bernice V. Lenhart | William Earl Lentz and Georgia Elaine Stitt Dennis | Mildred L. Lewin Estate | Christine S. Lewis Trust | Darlene L. Lewis | Shirley J. Leyendecker | Ms. Lyllis Ling | J.T. and Dorothy Linville | Eleanor Ninas Little | Robert A. and Ida Mae Long | Blanche I. Lucas Foundation | Barbara Brookfield Lund | Edward F. and Ora Mae Lyle | Fred and Dee Lyons | Ann G. and Jack L. Mahurin | Mr. Abraham E. Margolin | Donald R. and Barbara Marsh | Mr. and Mrs. Alan R. Marsh | Marjorie Martin Trust | Ms. Oleta B. Maurer | Gladys R. McCall Estate | Dr. and Mrs. Frederick J. McCoy | Chuck and Karin McCrary | Emma Lee McCuiston Trust | McCullough Family Foundation | Patricia N. McMahan | Ms. Michelle A. McMillan | Larry L. McMullen | Letta M. Medford Estate | Gordon and Helen Medsker Trust | Mr. and Mrs. Joseph Medved | Sandra Sachen Medved | Mary Ann and Cordell D. Meeks, Jr. | Sam Meers and Julie Nelson Meers | Albert J. Mehl Trust | The Harold and Marilyn Melcher Foundation | Mr. and Mrs. Justin Merriman | Minnie Miehle | Ethleen R. Miller Charitable Trust | Jan and Frank Miller | Maxine Almata Miller Trust | Ms. Fay Moeller | Eliza Evans Monk | Dr. and Mrs. Max R. Moore | Robert R. Moore | Nell T. Morris Trust | Florence M. Mullis Estate | Virginia M. Myers | Margaret Suzanne Neal | Edward Paul Nelson Trust | Marjorie B. Neville Revocable Trust | Mary Amelia Newcomb Estate | Lena A. Nielsen | Michael and Anita Nolan | Mr. and Mrs. James B. Nutter, Sr. | Dr. and Mrs. Randall L. O'Donnell | Estate of Alice Weathermon Oliver | David Oliver & Mary Gresham | Kurt and Jenea Oliver Family | Lloyd C. Olson, MD | Robin L. Onikul, D.D.S. | Hazel D. Ouellete | Minnie J. Overly | Delma A. Parks | Alma Louise Parsons | Dr. and Mrs. Grover S. Patterson | Martha Peiker Trust | Dorothy Frances Peniston Trust | John W. Peniston | Walt and Eloise Peniston Trust | Mildred R. Phillips | Virginia Piercy | Florence Piskorski Trust | Eloise Pollard | Mr. and Mrs. James H. Porter | Jay M. Portnoy, MD | Dean and Jennifer Postel Family | Emma J. Pratt | John and Mary Pritchard | Mr. and Mrs. William Putnam, Jr. | Ms. Barbara Quinn | Helen L. Railsback | Dr. Bartlett W. and Harriette H. Ramsey | Mr. and Mrs. B. John Readey III | Ernest C. and Laura Mae Rechterman | Mrs. Charles V. Reimer | Donna M. Ridder | Evie and Bill Riek | John E. Roberts | Kim Robertson | Dorothy L. Rode | Mrs. W. H. Rodert | Ms. Elizabeth V. Rohrs | Claude T. Roper | Mrs. Margaret Rounds | Gerean Rudnick and Family | Robin Rusconi and Jae McKeown | John T. Russell | Ralph and Mary Helen Sarli | Ginzy Schaefer | Sandra Schaffer | Lisa and Charlie Schellhorn | Adrian and Roberta Schnoebelen | Mary Agnes Schreck | Mr. and Mrs. Michael A. Schultz | Jim and Kelli Schwartz | Mr. and Mrs. Thomas M. Scott | Frances Segraves Trust | Pansy A. Seitz Trust | Dr. and Mrs. Ronald J. Sharp | Daniel and Kacy Seitz | Mr. and Mrs. Michael E. Shepard & Family | Thomas and Vera Sherman | Mary E. Shirk Trust | Clara L. Shumway Charitable Trust | Lester Siegel, Jr. | Charlotte Simonson | IMO Mrs. William Robert Sink | Mr. and Mrs. Loyd Smoyer | Aaron Smullin | Idell L. Solsky | Ralph Soule Irrevocable Annuity Trust | Maxyne Wolff Southers Trust | Mary K. Stadler | Dorothy Earl Stansberry | Dr. and Mrs. Timothy Stepp | Mrs. Malinda Stern | Alan R. Stetson | Paul E. and Virginia K. Stewart | Edna L. Stinehour | Bob and Amy Stiner | Jo and John Stueve | Mr. and Mrs. Herman R. Sutherland | Elizabeth Weekley Sutton | Kathy and Steve Swatek | Bud and Lois Taber | Louise B. Tate Trust | Bud and Connie Taylor | Mrs. Elizabeth J. Taylor | Mr. Robert N. Taylor | Susanne R. Teel | Rose Sarli Teicher Trust | Davoren and William Tempel | Mr. Norman M. Tempel | William A. and Suzanne H. Tholen Estate | Mr. and Mrs. Edwin H.L. Thompson II | Mrs. Frank A. Thompson | Kaleen Tiber | Montie and Marge Tripp | Dr. William E. Truog III and Dr. Jill D. Jacobson | Joanne M. Vandervort | Shanelle and Mike Varone | Leonard B. and H. Kathleen Wade | John R. Wall Estate | Melinda L. Walz | Janice L. Warren | Dr. Gary S. and Cheryl A. Wasserman | Maurice A. Watson | Phil and Anne Watson | Mr. and Mrs. William K. Waugh, III | Mr. and Mrs. Gordon E. Wells, Sr. | Hazel Barton Wells | David H. Westbrook | Pamela and Dan Williams | Marie R. Williams | Helen and Frank Wilson | Tod and Madelyn Wilson Family | Ruth Nelsen Winkler | Estate of Marie F. Wood | Mr. and Mrs. Gardner Wright | Amy Wurst | Le Roy McCreery and Gertrude Yancy | Walter A. and Mary Yost | Jack N. and Mildred Young |

\*Italics denotes deceased member



# Our generous donors make it all possible!

For nearly 120 years — since Children’s Mercy was founded with a single, rented bed — generous hearts have championed our mission to provide the best medical care for every child. Everything you’ve read about in our 2016 Annual Report was made possible because of the love and support of our donors, volunteers, grateful families and advocates.

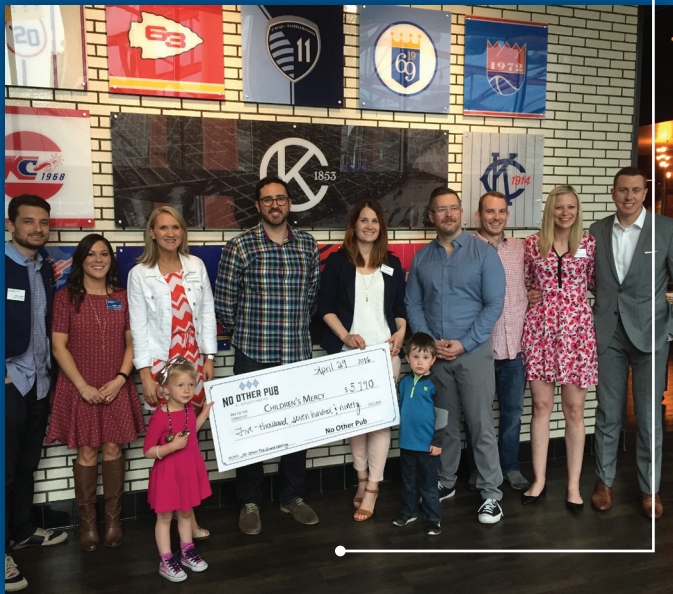


Big Slick host Jason Sudeikis saying “Cheese!” with a patient at Children’s Mercy Hospital. Photo by Kyle Rivas Getty Images

There are so many faces of giving and so many ways of giving at Children’s Mercy. Every gift of time and treasure helps children return to good health. Thank you, thank you, thank you!

– Jenea Oliver, Vice President of Philanthropy at Children’s Mercy

Mercy Ambassador Auxiliary members gathered at No Other Pub to accept a donation from the restaurant, which held a fundraiser to benefit the Children’s Mercy Clothing Closet.



2016 Red Hot Night guests included left to right: Charlena Peppes and Event Co-Chair Steve Peppes, Hands & Hearts Auxiliary President Vince Morris and Hands & Hearts Auxiliary board member Sarah Morris, Honorary Co-Chairs Brad and Gisele Sprong, Melva O’Donnell and Children’s Mercy President & CEO Dr. Randall O’Donnell, Honorary Co-Chairs Bill and Christy Gautreaux, Event Co-Chair Bryan Adress and Paula Andres.



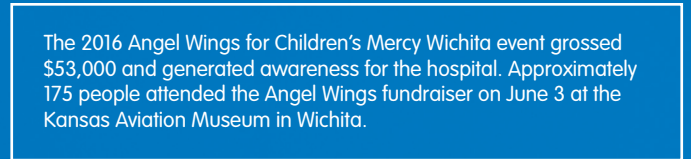
Left to Right: David Westbrook's family and friends gathered to celebrate the dedication of the David H. Westbrook Ophthalmology Clinic on Tuesday, Nov. 10. L – R: Lt. Col. Jesse Wheeler; David Westbrook, Senior Vice President of Strategy and Innovation at Children's Mercy; Helena Berger, Cynthia Wheeler, and Shanelle Varone, Senior Administrative Director, Philanthropy.



For 14 years, Diamond Volunteer Sally Clark has made a difference for children and families.



Mr. and Mrs. James B. Nutter Sr., grandson Russell Moore, facility dog Hunter and a young patient with "Buddy," a bronze sculpture in the garden of the Lisa Barth Chapel created by Kansas City artist Tom Corbin and given to the hospital by James B. Nutter Sr. and his wife Annabel earlier this year. The sculpture is a memorial to the Nutters' deceased daughter, Nancy, who was a dog lover who owned eight dogs, one of which was Buddy, whom the sculpture was named after. Children and families at the hospital often visit Buddy to find consolation when they aren't able to be with their pets at home.



The 2016 Angel Wings for Children's Mercy Wichita event grossed \$53,000 and generated awareness for the hospital. Approximately 175 people attended the Angel Wings fundraiser on June 3 at the Kansas Aviation Museum in Wichita.



The Stanleys – Parents Mike and Kim; Taylor, age 8; and Callyn, age 4; delivered a message of hope to patients on 4 Henson on Christmas day. The T-shirts say: “You can never break the spirit of a fighter.” The shirts have been popular and resonate deeply with families facing cancer or any type of obstacle, says Kim Stanley. Callyn (left) is now in remission from retinoblastoma.



Million Dollar Trust - Children’s Mercy held a luncheon on Oct. 6 to honor four family legacies, each making major donations to the hospital, worth approximately \$4 million total. Pictured, from left to right, are: Lori Feek with UMB (Ervin Trust); Liz Rowe and Amy Pieper with Commerce Trust (Young Trust); Dr. Randall O’Donnell, Children’s Mercy President and CEO; Donald Edinger with BMO Trust (DeLappe Trust); and Colin Gotham with Evans & Mullinix (Basler Estate).



The FY16 Employee Giving Campaign linked the hospital’s history and future by introducing the 1897 Society. By donating \$18.97 or more, 850 employees demonstrated their commitment to the hospital’s mission and collectively donated \$120,636.



Families and hospital staff united for the 2015 KC Cares for Kids Walk held at Children’s Mercy Park and raised nearly \$88,000 for Children’s Mercy patients with cancer and blood disorders. Participants easily tripled the number of walkers from the previous year.



In April 2016, Children’s Mercy dedicated space in the Kreamer Resource Center in memory of former patient and volunteer Brian Hayhow. Family and close friends were on hand for the dedication. Wife, Georgianne (second from left); daughter, Brynne; and parents, Jack and Joyce.

## Philanthropic Impact

# Our Community LOVES Children's Mercy

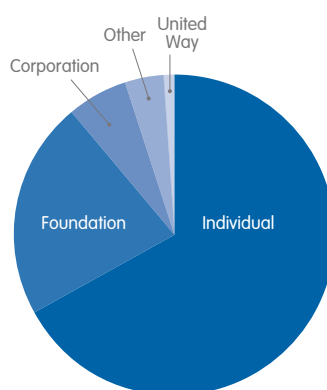
Every gift, of every size, makes a difference! Here's a look at philanthropic support in the past year.

**45.1 million** dollars | **15,083** gifts | **10,776** donors

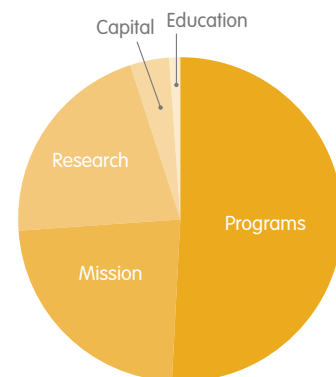


**945** volunteers gave  
**64,520** hours of time

Sources of Funds



Uses of Funds



**69,250** guests assisted | **11,150** guests escorted



**9,841** Kreamer Resource Library visits



**109,933** Gift Shop transactions

Served **1** in every **3** kids in the greater Kansas City area.



**Children's Mercy**  
**KANSAS CITY**

2401 Gillham Road  
Kansas City, MO 64108

Non-Profit Org.  
U.S. Postage  
**PAID**  
Kansas City, MO  
Permit #4301