

Children's Mercy Kansas City

SHARE @ Children's Mercy

Community Benefits

Who we are

2018

2017 Community Benefit Summary

Children's Mercy Hospital

Let us know how access to this publication benefits you

Follow this and additional works at: https://scholarlyexchange.childrensmercy.org/community_benefits



Part of the [Community Health and Preventive Medicine Commons](#), and the [Public Health Education and Promotion Commons](#)

Recommended Citation

Children's Mercy Hospital, "2017 Community Benefit Summary" (2018). *Community Benefits*. 11. https://scholarlyexchange.childrensmercy.org/community_benefits/11

This Book is brought to you for free and open access by the Who we are at SHARE @ Children's Mercy. It has been accepted for inclusion in Community Benefits by an authorized administrator of SHARE @ Children's Mercy. For more information, please contact hlsteel@cmh.edu.

COMMUNITY BENEFIT SUMMARY

Fiscal Year 2017*

Total Community Investment: \$195,298,231
over \$535,000 per day

UNCOMPENSATED CARE

Financial Assistance at Cost (formerly Charity Care)

Free and discounted inpatient and outpatient care where the recipient could not afford services or lacked health insurance.

Unreimbursed Medicaid Programs

Unreimbursed costs from providing care to patients enrolled in government health programs.

RESEARCH

Studies or investigations, supported by internal funding and designed to generate knowledge that will be made available to the public.

HEALTH PROFESSIONS EDUCATION

Educational programs that result in degrees or training necessary to practice as a health professional.

COMMUNITY HEALTH PROGRAMS AND PARTNERSHIPS

Community Health Improvement Services

Activities to improve community health and provide community health education, outreach and prevention programs and services.

Financial and In-kind support

Support to community organizations that includes capacity building grants, nonprofit sponsorship, and board service.

Community Benefit Operations

Cost of dedicated Community Benefit staff, reporting and compliance, program planning, evaluation, training, and staff development.

SUBSIDIZED HEALTH SERVICES

Clinical services that are provided despite a financial loss because they meet a community need.

COMMUNITY BUILDING ACTIVITIES

Activities that address root causes of health problems, such as poverty, homelessness, environmental hazards and support.

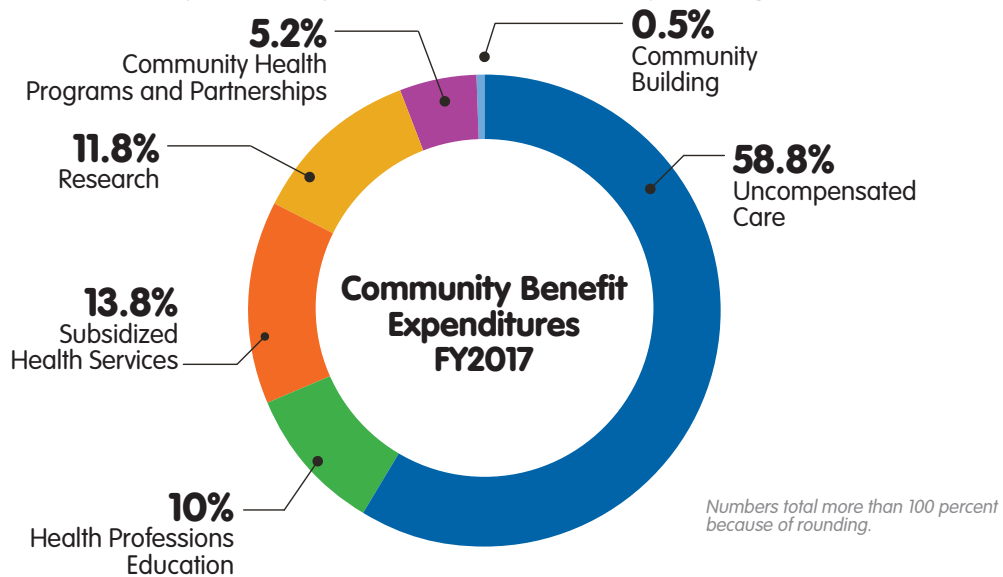


WHAT IS COMMUNITY BENEFIT?

To be considered community benefit, a program or service must meet an identified community need and at least one of four objectives:

- improve access to health care
- enhance the health of the community
- advance medical or health knowledge
- relieve or reduce the burden of government or other community efforts.

Community benefit is the basis of the tax-exempt status for a non-profit hospital. Community benefits are classified by the Internal Revenue Service in the categories of uncompensated care, health professions education, research, community health improvement and community building.



CATEGORY OF COMMUNITY BENEFIT	FY17 NET EXPENSE
UNCOMPENSATED CARE	\$114,858,595
Charity Care at cost	\$14,316,138
Unreimbursed Medicaid	\$100,542,457
SUBSIDIZED HEALTH SERVICES	\$26,871,821
HEALTH PROFESSIONS EDUCATION	\$19,512,104
RESEARCH	\$22,997,793
COMMUNITY HEALTH PROGRAMS AND PARTNERSHIPS	\$10,150,913
Community Health Improvement Services	\$9,051,275
Cash and In-Kind Contributions	\$773,939
Community Benefit Operations	\$325,699
COMMUNITY-BUILDING ACTIVITIES#	\$907,005
TOTAL COMMUNITY INVESTMENT	\$195,298,231

For more information about our work in the community see: childrensmercy.org/CommunityBenefit

* Fiscal Year 17: July 1, 2016-July 30, 2017

Community building activities are reported on an annual basis to the Internal Revenue Services separate from the other Community Benefit categories. For the purpose of this report we incorporate community building in the total Community Benefit.