

Children's Mercy Kansas City

SHARE @ Children's Mercy

Care Process Models

Quality Improvement and Clinical Safety

3-2021

Autism and/or Developmental Delay

Children's Mercy Kansas City

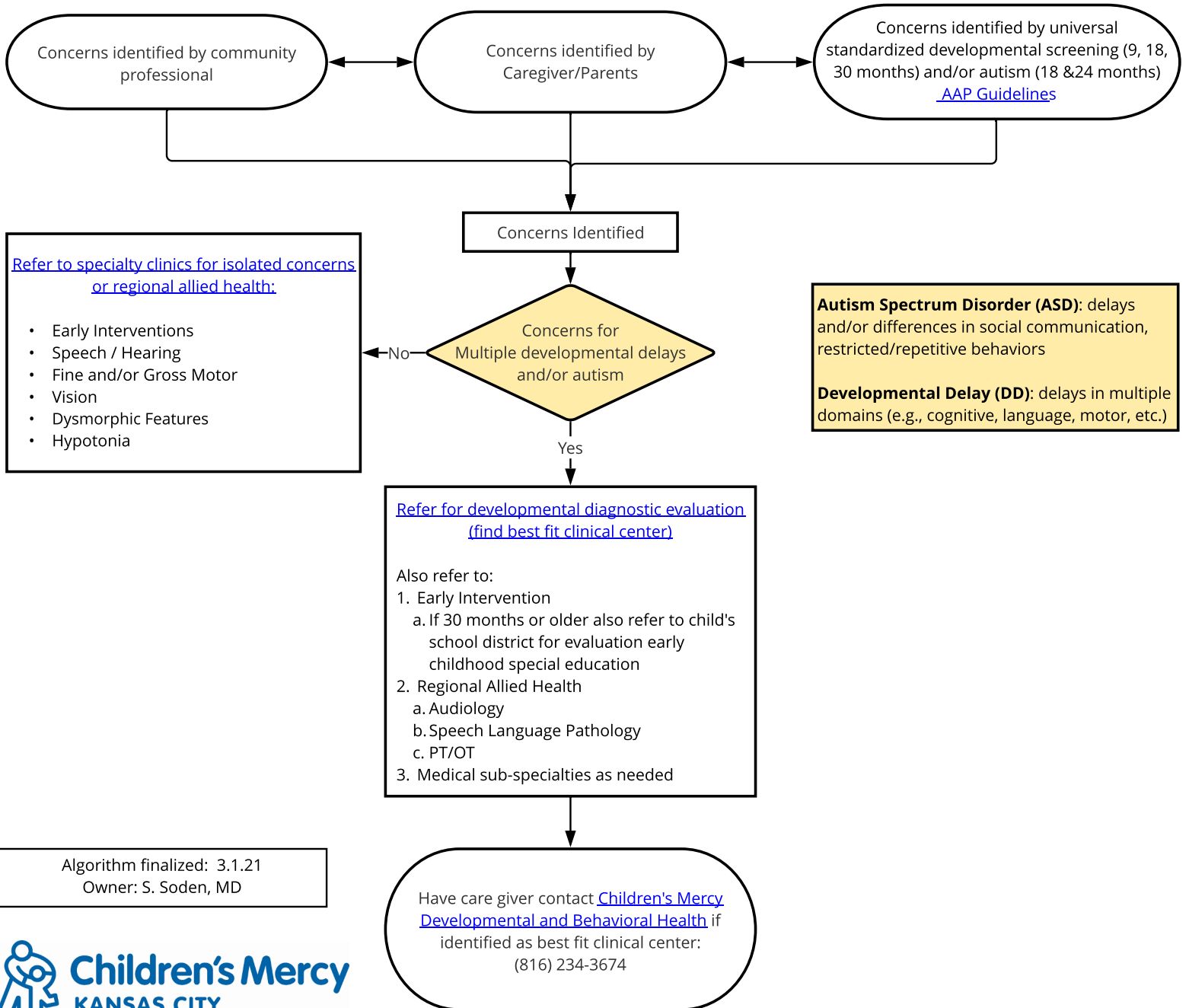
Follow this and additional works at: https://scholarlyexchange.childrensmercy.org/care_models



Part of the [Pediatrics Commons](#)

These guidelines do not establish a standard of care to be followed in every case. It is recognized that each case is different and those individuals involved in providing health care are expected to use their judgment in determining what is in the best interests of the patient based on the circumstances existing at the time. It is impossible to anticipate all possible situations that may exist and to prepare guidelines for each. Accordingly, these guidelines should guide care with the understanding that departures from them may be required at times.

Triage for Autism and Developmental Concerns in Primary Care (12-36 months)



[Refer to specialty clinics for isolated concerns or regional allied health:](#)

- Early Interventions
- Speech / Hearing
- Fine and/or Gross Motor
- Vision
- Dysmorphic Features
- Hypotonia

Autism Spectrum Disorder (ASD): delays and/or differences in social communication, restricted/repetitive behaviors

Developmental Delay (DD): delays in multiple domains (e.g., cognitive, language, motor, etc.)

Algorithm finalized: 3.1.21
Owner: S. Soden, MD