

Children's Mercy Kansas City

## SHARE @ Children's Mercy

---

Care Process Models

Quality Improvement and Clinical Safety

---

3-2021

### HIV Testing

Children's Mercy Kansas City

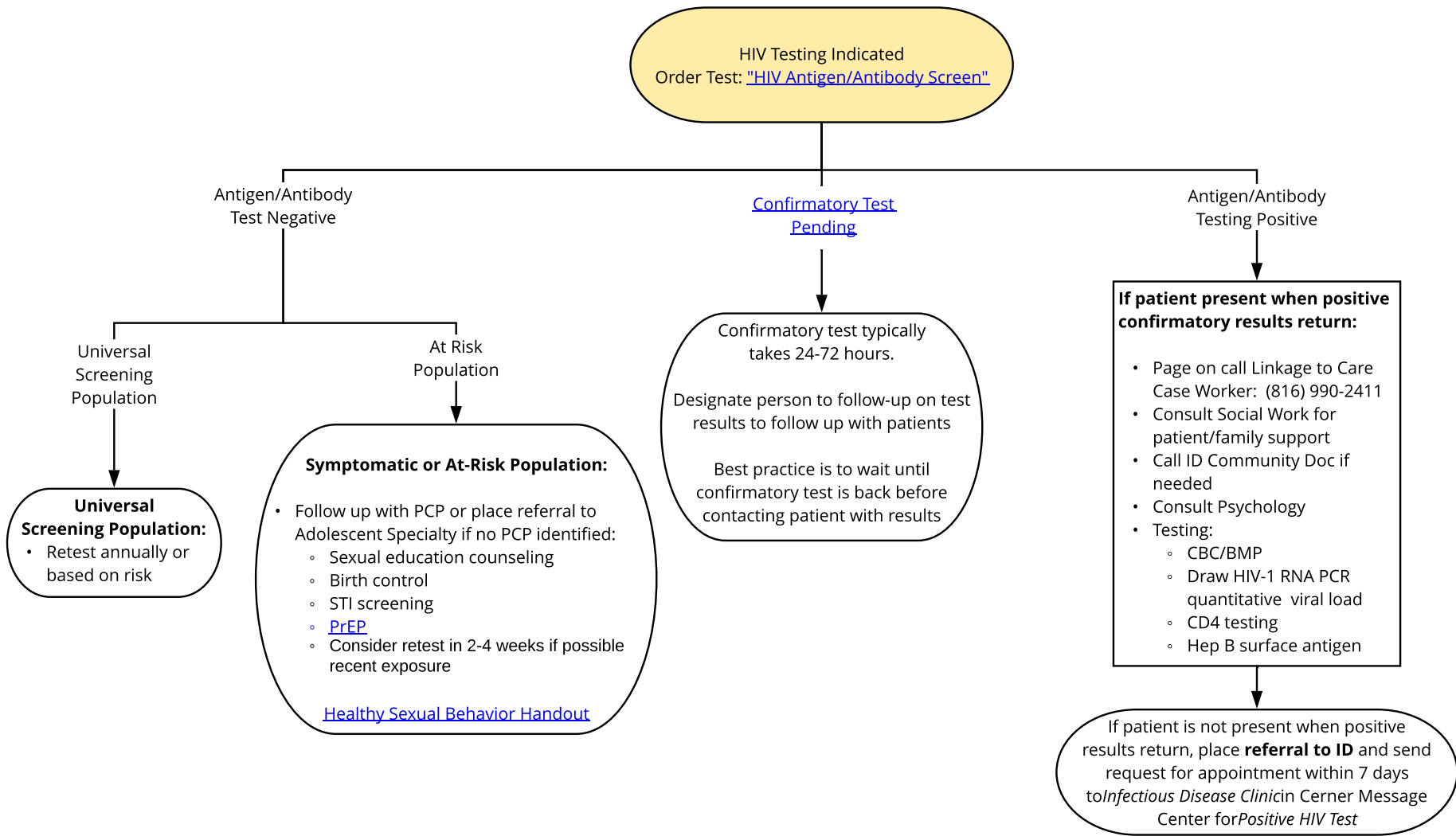
Follow this and additional works at: [https://scholarlyexchange.childrensmercy.org/care\\_models](https://scholarlyexchange.childrensmercy.org/care_models)



Part of the [Pediatrics Commons](#)

These guidelines do not establish a standard of care to be followed in every case. It is recognized that each case is different and those individuals involved in providing health care are expected to use their judgment in determining what is in the best interests of the patient based on the circumstances existing at the time. It is impossible to anticipate all possible situations that may exist and to prepare guidelines for each. Accordingly, these guidelines should guide care with the understanding that departures from them may be required at times.

---



- Indication for HIV Testing for any of the following:
- [Age >14](#)
  - Concern for pregnancy with concurrent testing
  - History of unprotected sexual activity
  - Other concurrent sexually transmitted infection
  - IV Drug Use
  - High risk behavior
    - Drug and alcohol use
    - Multiple partners
    - Male who have sex with males
  - No previous HIV screening
  - Patient/parent request
  - Sexual Assault
  - Tuberculosis infection
  - History sexual activity with current illness:
    - Malaise
    - Fever
    - Sore Throat
    - Lymphadenopathy

- Education**
- [PrEP](#)
  - [Healthy Sexual Behavior Handout](#)
  - [Your Test for HIV](#)

**Community Providers**

Questions about testing or positive results contact: 1 (800) GO MERCY  
Ask for Infectious Diseases

[HIV Non-Occupational Post-Exposure Prophylaxis \(nPEP\) Care Process Model](#)

Algorithm finalized/ revised: 02.25.21; 03.31.21  
Owner: Diane Petrie

