

Children's Mercy Kansas City

SHARE @ Children's Mercy

Care Process Models

Quality Improvement and Clinical Safety

4-2017

Sepsis, Emergency Department/Inpatient

Children's Mercy Kansas City

Follow this and additional works at: https://scholarlyexchange.childrensmercy.org/care_models



Part of the [Pediatrics Commons](#)

These guidelines do not establish a standard of care to be followed in every case. It is recognized that each case is different and those individuals involved in providing health care are expected to use their judgment in determining what is in the best interests of the patient based on the circumstances existing at the time. It is impossible to anticipate all possible situations that may exist and to prepare guidelines for each. Accordingly, these guidelines should guide care with the understanding that departures from them may be required at times.

Recommended Citation

Children's Mercy Kansas City, "Sepsis, Emergency Department/Inpatient" (2017). *Care Process Models*. 53.

https://scholarlyexchange.childrensmercy.org/care_models/53

This Care Process Model is brought to you for free and open access by the Quality Improvement and Clinical Safety at SHARE @ Children's Mercy. It has been accepted for inclusion in Care Process Models by an authorized administrator of SHARE @ Children's Mercy. For more information, please contact hlsteel@cmh.edu.

[Family Education](#)

[Goals and Metrics](#)

10 min

0-20 min

Rapid NS 20ml/kg boluses
Repeat as needed with goal of
60 mL/kg in first hour

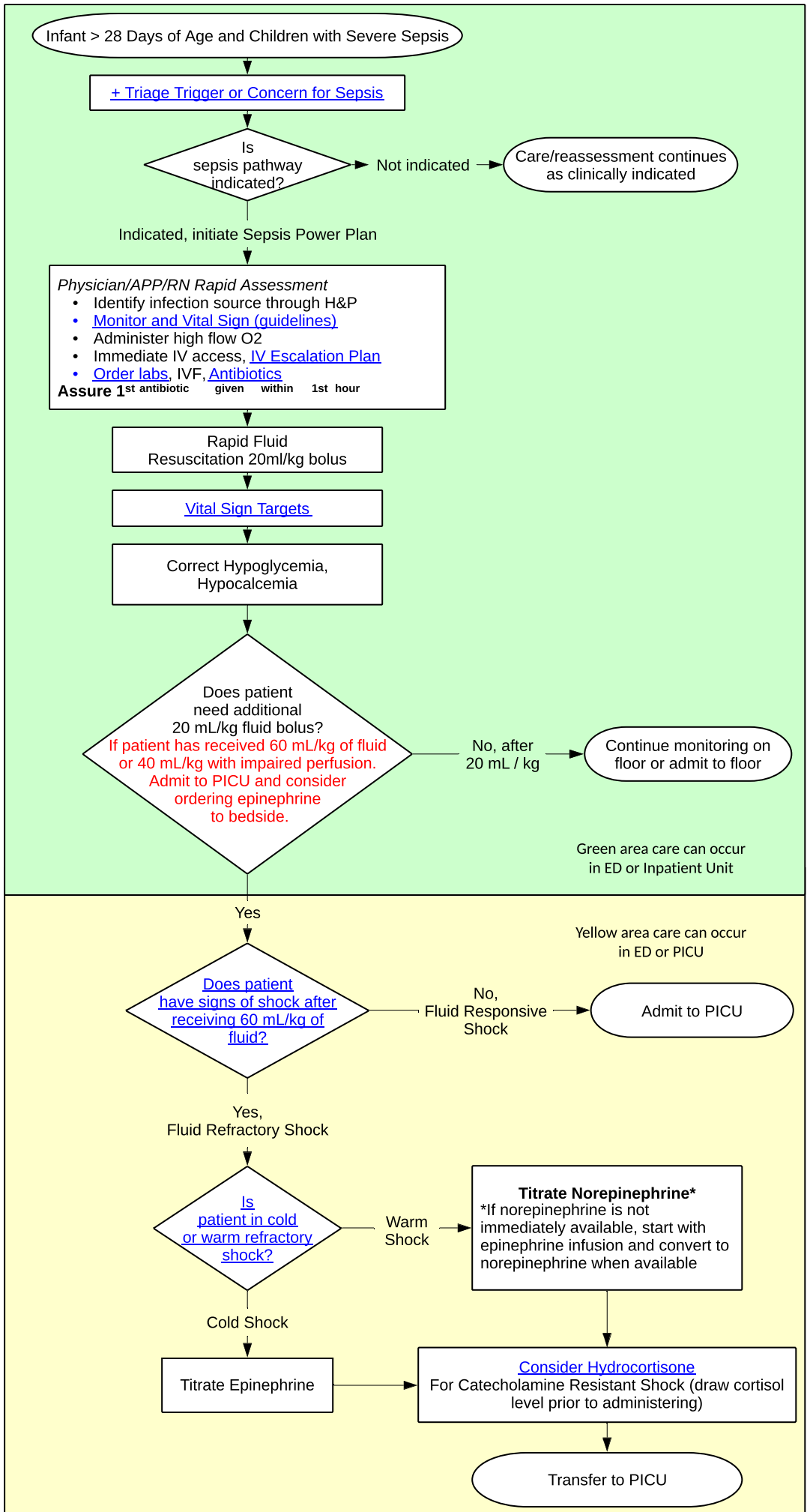
0-40 min

60 min

References to learn more:

Brierley, J, et al. 2007 American College of Critical Care Medicine clinical practice parameters for hemodynamic support of pediatric and neonatal septic shock*. Crit Care Med. 2008 Nov 28.
Cruz, AT, et al. Implementation of goal-directed therapy for children with suspected sepsis in the emergency department. Pediatrics. 2011 Mar;127(3):e758-66.
Larsen, GY, Mecham N, Greenberg R. An emergency department septic shock protocol and care guideline for children initiated at triage. Pediatrics. 2011 Jun;127(6):e1585-92
Goldstein, B, Giroir B, Randolph A. International pediatric sepsis consensus conference: definitions for sepsis and organ dysfunction in pediatrics. Pediatr Crit Care Med. 2005 Jan;6(1):2-8

The Sepsis Guideline, initially developed by The Children's Hospital of Philadelphia, has been reconceptualized by Children's Mercy--Kansas City (4/17).



Green area care can occur in ED or Inpatient Unit

Yellow area care can occur in ED or PICU