

Children's Mercy Kansas City

SHARE @ Children's Mercy

Posters

2017

Global Health Elective: Swaziland, Africa

Jane Duong

Children's Mercy Hospital

Let us know how access to this publication benefits you

Follow this and additional works at: <https://scholarlyexchange.childrensmercy.org/posters>



Part of the [Internal Medicine Commons](#), [International Public Health Commons](#), [Medical Education Commons](#), and the [Pediatrics Commons](#)

Recommended Citation

Duong, Jane, "Global Health Elective: Swaziland, Africa" (2017). *Posters*. 62.
<https://scholarlyexchange.childrensmercy.org/posters/62>

This Poster is brought to you for free and open access by SHARE @ Children's Mercy. It has been accepted for inclusion in Posters by an authorized administrator of SHARE @ Children's Mercy. For more information, please contact hlsteel@cmh.edu.

Jane Duong, MD

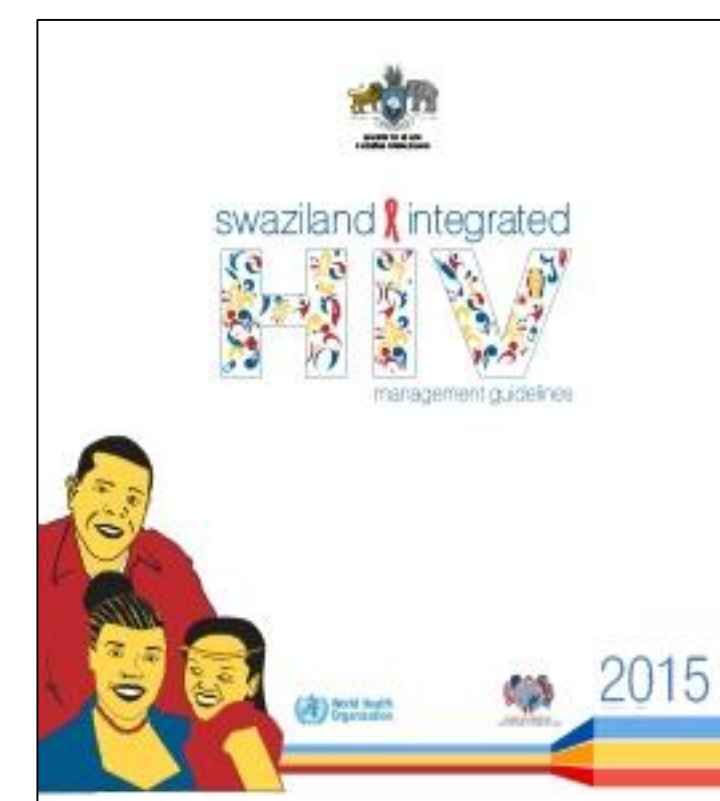
UMKC Medicine-Pediatrics
Children's Mercy Kansas City

Background / Objective

- I had never been to Africa before!
- Being Med-Peds, I wanted an experience where I could see both adults and children
- BIPAI is the largest provider of pediatric HIV care and treatment in the world
- Wanted to experience how an established NGO clinic provides sustainable care for local populations

Preparation

- Online research about Swaziland (now known as Kingdom of Eswatini)
- Swaziland Integrated HIV Management Guidelines
- Spoke to other residents who had traveled to Swaziland previously



Experience

- Swaziland has the highest HIV infection rate in the world (estimated 26% of adults are infected with HIV)
- Worked with children and adults with HIV at the Baylor outpatient clinic
- Attended local outreach clinics, Teen Club and inpatient care at the local hospital

Reflection

- Amazing experience working with local healthcare providers
- Learned about how the local culture and stigmas affect HIV care
- Learned about how to make a sustainable NGO clinic work:
 - Lots of resources- check out that digital XR machine on site!
 - Foreign doctors who have integrated and made Swaziland home
 - Ancillary staff that were themselves patients of the clinic
 - Collaboration and learning from other clinics and healthcare providers in the country

Future Directions

- Being Med-Peds is perfect for global health!
- Continue to have global health be a part of my career with international trips and local involvement
- Continue to be involved with sustainable NGOs

