

4-2023

## Infusion Reaction in Hem/Onc Patients

Children's Mercy Kansas City

These guidelines do not establish a standard of care to be followed in every case. It is recognized that each case is different and those individuals involved in providing health care are expected to use their judgment in determining what is in the best interests of the patient based on the circumstances existing at the time. It is impossible to anticipate all possible situations that may exist and to prepare guidelines for each. Accordingly, these guidelines should guide care with the understanding that departures from them may be required at times.

Follow this and additional Clinical Pathways at: [https://scholarlyexchange.childrensmercy.org/clinical\\_pathways/](https://scholarlyexchange.childrensmercy.org/clinical_pathways/)

---

### Recommended Citation

Children's Mercy Kansas City, "Infusion Reaction in Hem/Onc Patients" (2023). *Clinical Pathways*. [https://scholarlyexchange.childrensmercy.org/care\\_models/67](https://scholarlyexchange.childrensmercy.org/care_models/67)

This Clinical Pathway is brought to you for free and open access by the Evidence-Based Practice Collaborative at SHARE @ Children's Mercy. It has been accepted for inclusion by an authorized administrator of SHARE @ Children's Mercy. For more information, please contact [evidencebasedpractice@cmh.edu](mailto:evidencebasedpractice@cmh.edu).

**Medications Associated with Anaphylaxis**

Includes but not limited to:

- Antithymocyte globulin (equine or rabbit)
- Subsequent (2nd or greater) doses of asparaginase
- Carboplatin
- Deferoxamine (*Desferal*)
- Docetaxel
- Etoposide (mild hypotension may not indicate anaphylaxis)
- Oxaliplatin
- Paclitaxel
- [IV Iron \(internal CMKC link\)](#)

**Medications Associated with Non-Allergic Reaction / Cytokine Release Syndrome**

- 1st infusion of asparaginase (no prior exposure)
  - Symptoms may be due to elevated ammonia levels and classically present with transient nausea/vomiting, headache, rash
- Monoclonal antibodies / immunotherapy

**Anaphylaxis Criteria**

1. Sudden onset of illness with involvement of skin, mucosa, or both (i.e. hives, itching, flushing, swollen lips/tongue/uvula)

a. Plus at least one of the following:

- i. Sudden respiratory symptoms (dyspnea, cough, stridor, hypoxemia)
- ii. Sudden reduced blood pressure or end-organ dysfunction (hypotonia, syncope, incontinence, mottling)

**OR**

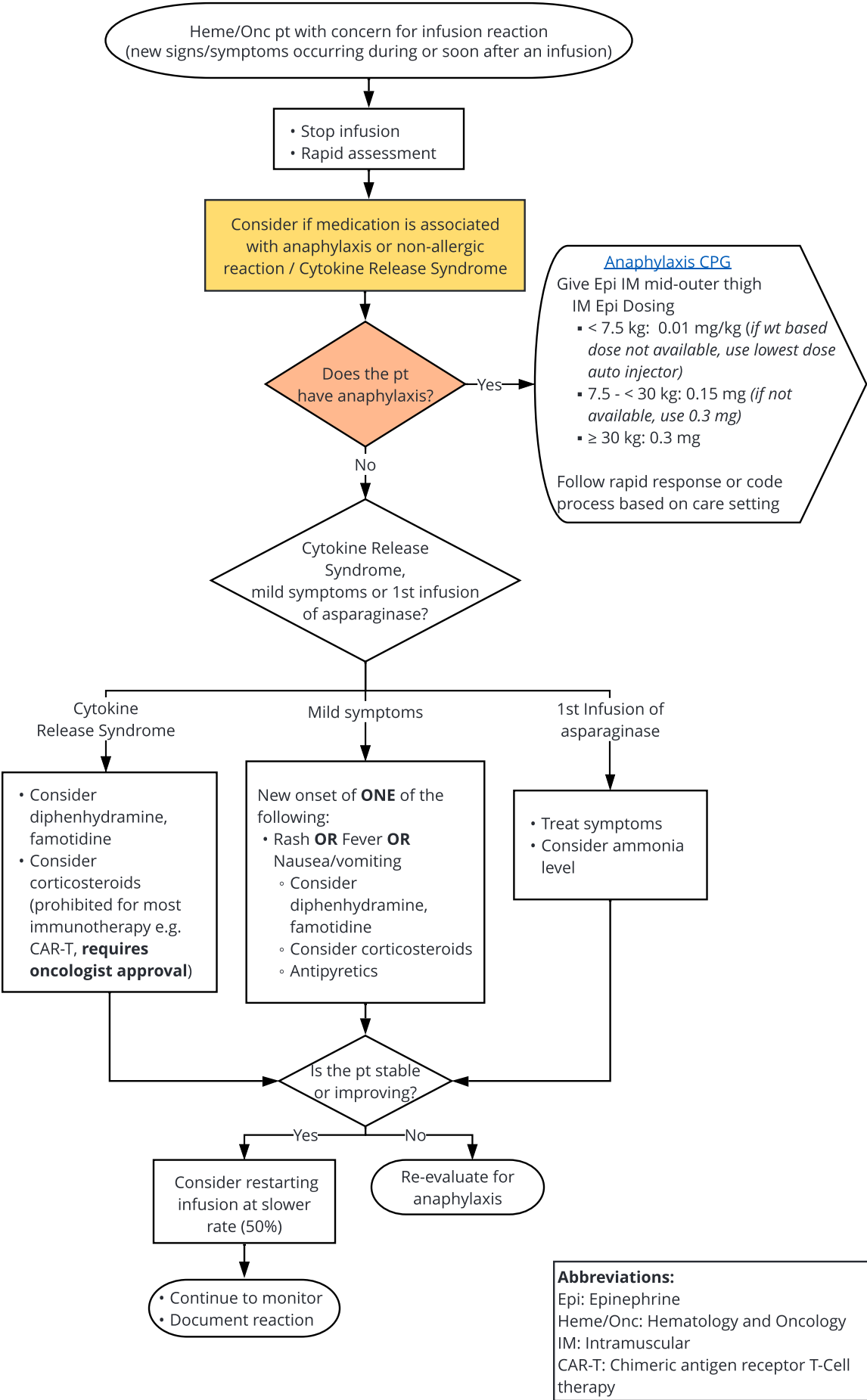
2. Two or more of the following after exposure

- a. Sudden skin or mucosal changes
- b. Sudden respiratory symptoms (dyspnea, cough, stridor, hypoxemia)
- c. Sudden reduced blood pressure
- d. Sudden GI symptoms

**OR**

3. Reduced blood pressure or symptoms after known exposure

a. Age specific low systolic blood pressure or > 30% decrease in systolic blood pressure from baseline



**Abbreviations:**

Epi: Epinephrine  
Heme/Onc: Hematology and Oncology  
IM: Intramuscular  
CAR-T: Chimeric antigen receptor T-Cell therapy