

Children's Mercy Kansas City

SHARE @ Children's Mercy

Research Days

GME Research Days 2024

May 16th, 12:45 PM - 1:00 PM

Parents' Perception of an Intensive Interdisciplinary Pain Treatment for Amplified Pain Syndrome

Jacqueline Pabis PhD

Children's Mercy Kansas City

Sabrina Ung MA

Children's Mercy Kansas City

Jenny Scheurich PhD

Children's Mercy Kansas City

Dustin Wallace PhD

Children's Mercy Kansas City

Let us know how access to this publication benefits you

Follow this and additional works at: <https://scholarlyexchange.childrensmercy.org/researchdays>



Part of the [Health Psychology Commons](#), [Pain Management Commons](#), and the [Pediatrics Commons](#)

Pabis, Jacqueline PhD; Ung, Sabrina MA; Scheurich, Jenny PhD; and Wallace, Dustin PhD, "Parents' Perception of an Intensive Interdisciplinary Pain Treatment for Amplified Pain Syndrome" (2024). *Research Days*. 4.

https://scholarlyexchange.childrensmercy.org/researchdays/GME_Research_Days_2024/ResearchDay4/4

This Oral Presentation is brought to you for free and open access by the Conferences and Events at SHARE @ Children's Mercy. It has been accepted for inclusion in Research Days by an authorized administrator of SHARE @ Children's Mercy. For more information, please contact hlsteel@cmh.edu.

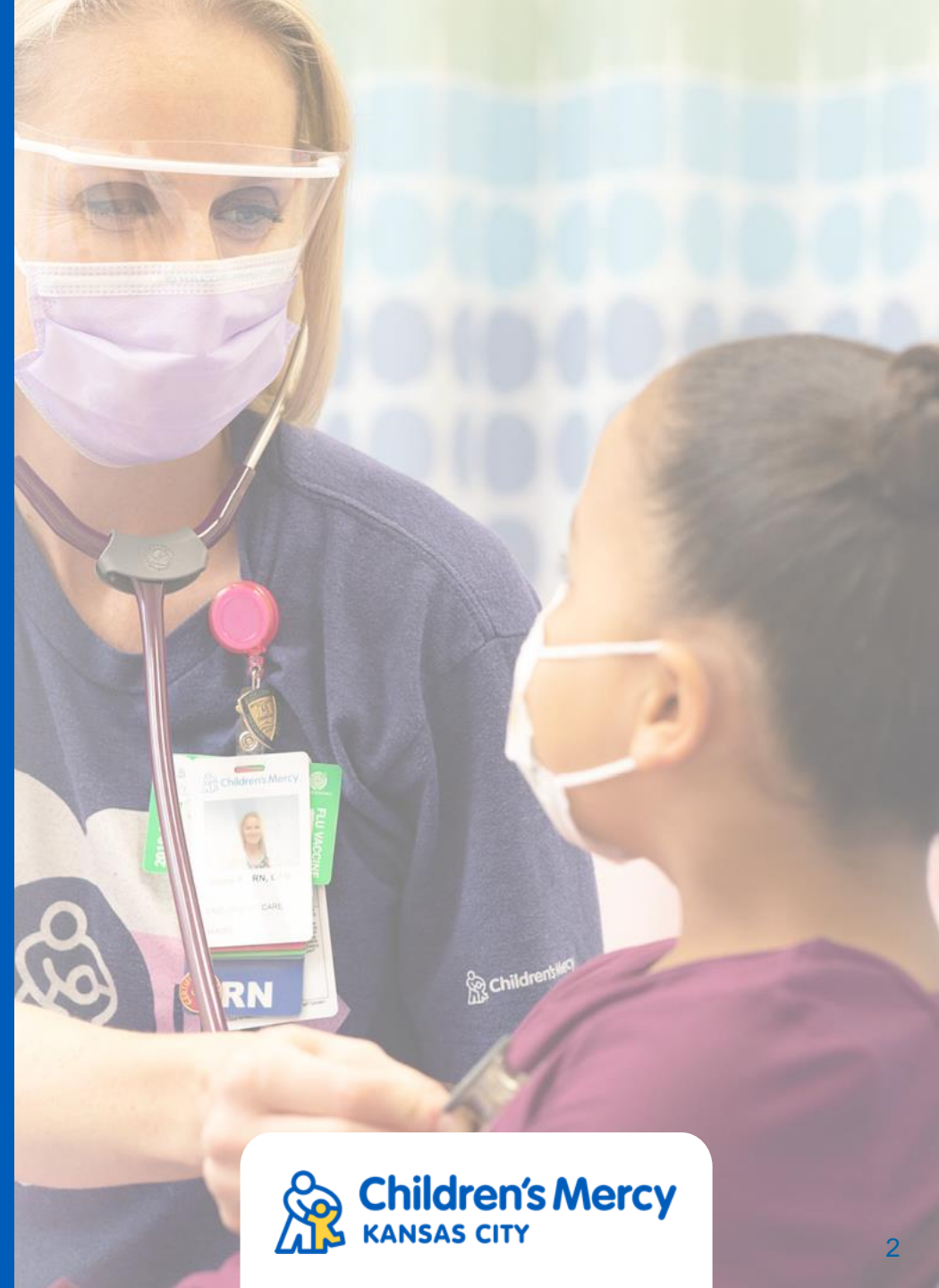
Parents' Perception of an Intensive Interdisciplinary Pain Treatment for Amplified Pain Syndrome

Jacqueline M. Pabis, PhD, Sabrina D. Ung, Jennifer A. Scheurich, PhD, & Dustin P. Wallace, PhD



Treating Chronic Pain

- Intensive interdisciplinary pain treatment (IIPT) is an effective treatment for youth impaired by chronic pain (Claus et al., 2022)
- IIPT programs incorporate parents in treatment, as parental distress has been found to impact health and functioning in youth with chronic pain (Palermo et al., 2015)
- Research suggests parent satisfaction may be related to increased child adherence, and in turn, reduced pain (Gorodzinsky et al., 2012)
- Limited research on parental satisfaction with IIPT and the role of parent-provider communication



Rehabilitation for Amplified Pain Syndromes (RAPS)

- For adolescents with disability, severe pain, & failure of outpatient treatment
- 4-6 week IIP program (Intensive Outpatient)
 - Physician, APRN, Psychology, Social Work, PT, OT, Music & Art Therapy
- Goals:
 - Return to physical function
 - Reduce pain & associated symptoms
- Treatment Components:



Methods: Participants

- Parents ($n = 99$) anonymously completed quantitative questionnaires and were invited to provide comments approximately one week after program completion

<i>Parents</i>	
Age	88.9% 35-54 years (4% 18-34;7.1% 55-74)
Gender	91.9% Female (13.3 % Male)
Education	39.8 % 4-year Degree (5.1% High School Degree; 23.5% Some College or 2-year Degree; 31.6% More than 4-year Degree)
<i>Children</i>	
Age	$M = 15.63$ years (1.89); 11-19
Gender	86.7% Female (13.3 % Male)
Race/ Ethnicity	83.8% White, Non-Hispanic/Latino [H/L] (9.2% White, H/L; 2% Black; 2% Asian, 2% Other, H/L; 1% Other, Non-H/L)

Methods: Measures

- **Parent Satisfaction**

- 0-10 slider scale

- **Perceived Communication**

- Average across four key providers (4 items) on 3-point scale (Yes, definitely; Yes, somewhat; No)

- **Perceived Child Functioning**

- 5-point scale (Excellent-Poor)

- **Qualitative Data**

- Open-ended response to provide additional comments about care

Communication Variables:

- Felt *comfort* with provider
- Used clear *explanations*
- *Concerns* not discussed (Reversed)
- *Listened* carefully
- Showed *respect*
- Conveyed helpful *information*



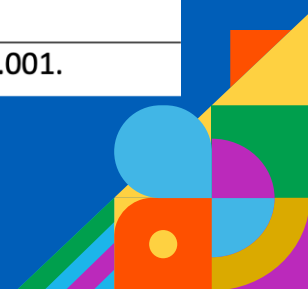
Results

- High Overall Satisfaction: 9.36/10
- Moderate to large associations between perceived communication factors and parent satisfaction ($r = .48-.74$; $p < .001$)
- Among perceived communication variables, respect and use of clear explanations accounted for the greatest variance in parent satisfaction while controlling for child functioning

Forward Regression Models of Perceived Communication in Relation to Parent Satisfaction

Variable	B	SE B	β	R^2	ΔR^2
Model 1				.19***	.19***
Constant	76.21	4.08			
Child Function	4.76	1.01	.45***		
Model 2				.55***	.35***
Constant	-13.79	11.23			
Child Function	3.17	0.78	.30***		
Respect	32.39	3.89	.61***		
Model 3				.58***	.03
Constant	-14.15	10.90			
Child Function	2.97	0.76	.28***		
Respect	18.46	6.69	.35**		
Explanations	14.40	5.71	.32*		

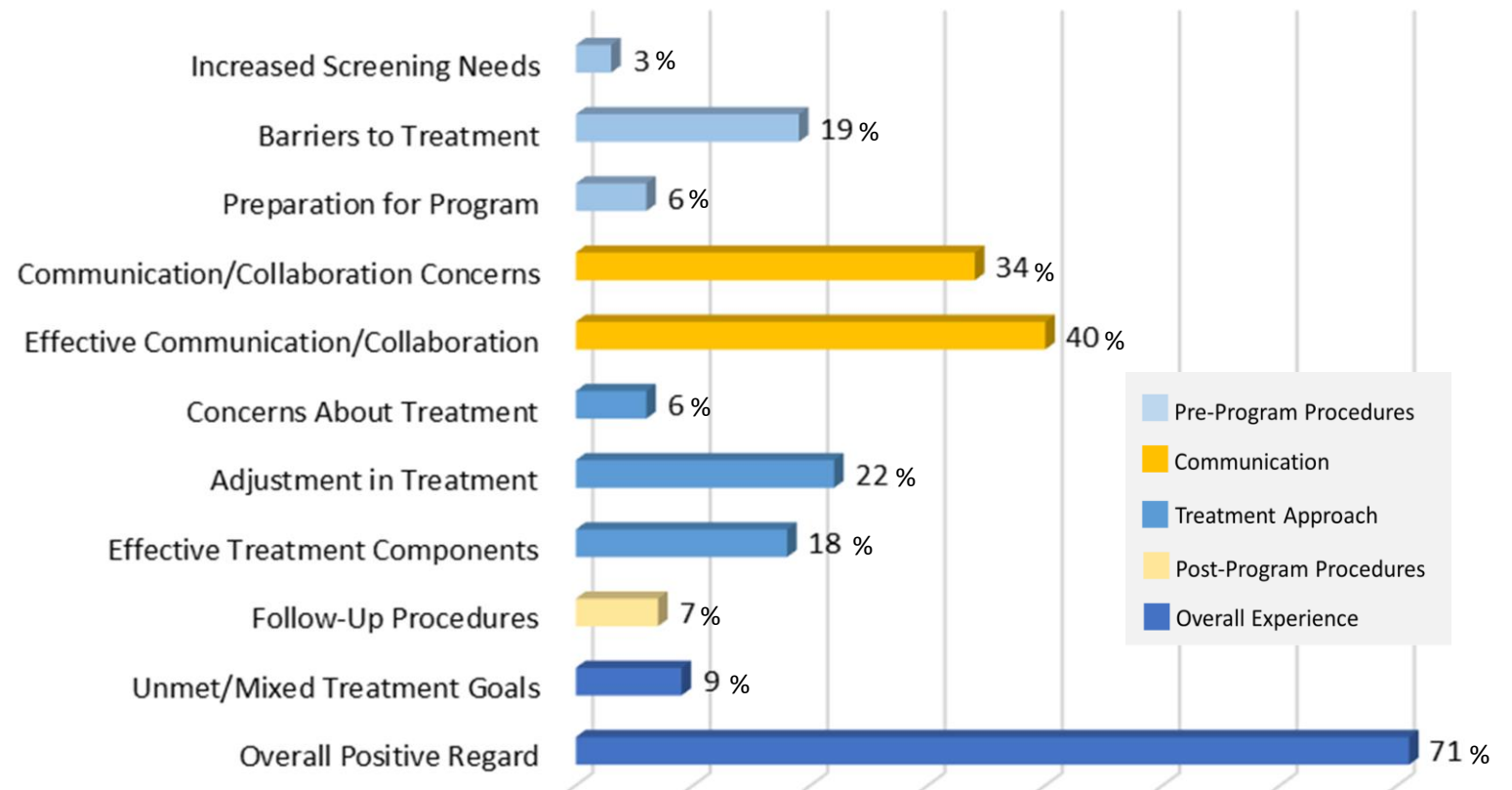
Note: All communication variables included; * $p < .05$, ** $p < .01$, *** $p < .001$.



Results

- 70% of sample provided written feedback
- Of these individuals, 59.4% provided feedback related to communication/collaboration

Themes Identified in Parent Feedback



Note: Percentage of parents among those who provided written feedback (n = 68) whose comments were consistent with identified themes.

Examples of Feedback

Communication/Collaboration Concerns

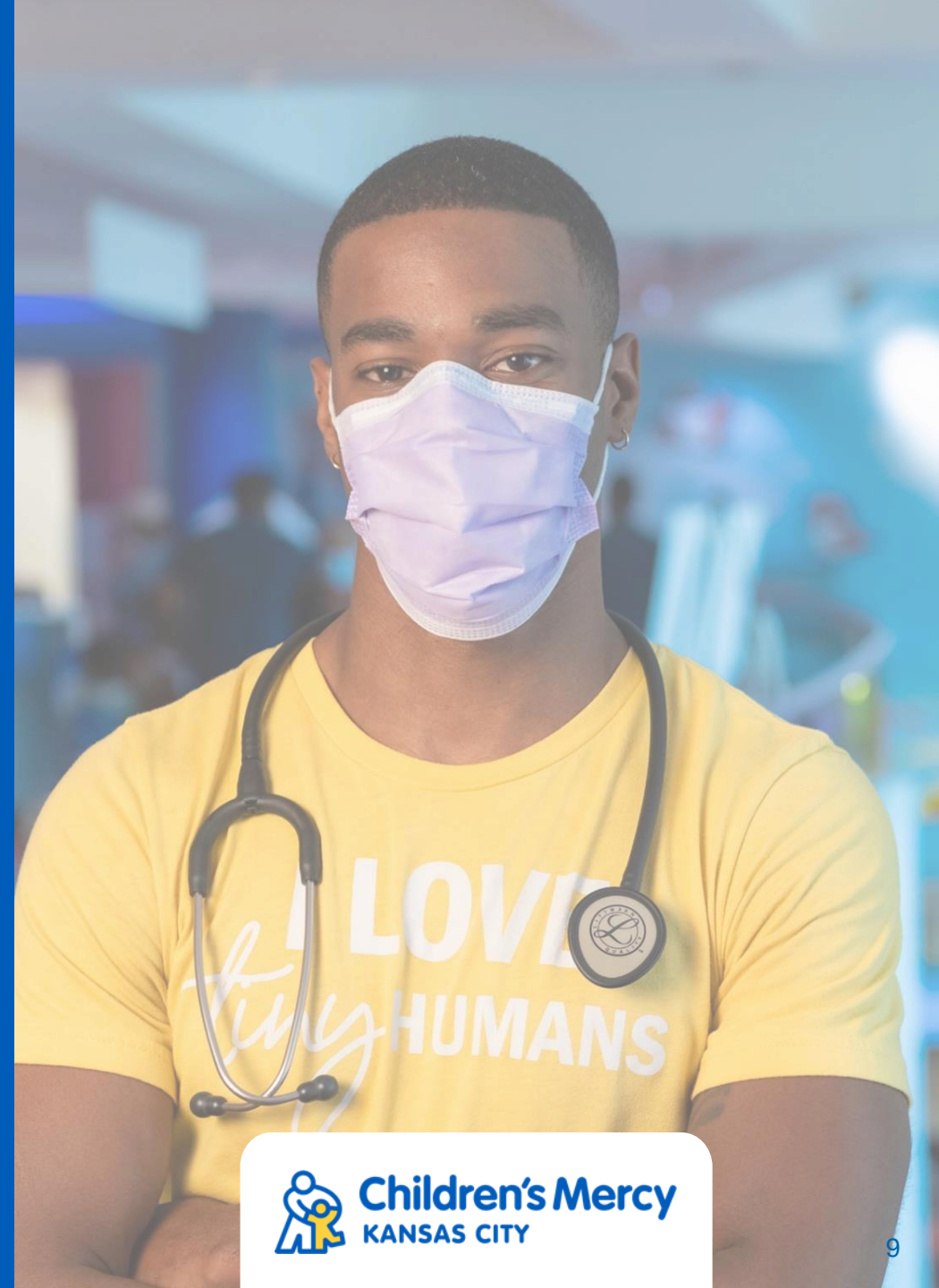
- Limited time with specific providers
- Private vs. group updates
- Add parent liaison
- Need increased sensitivity from providers

Effective Communication/Collaboration

- Daily, detailed feedback
- Balance of independence vs. support
- Providers knowledgeable, empowering

Discussion

- Overall, parents rate **high satisfaction** with IPT, which could have important ramifications during and after treatment
- Results highlight the **importance of parent-provider communication**; therefore, it would be beneficial for programs to assess communication with validated measures during treatment for quality improvement
- Future research should examine **individual and cultural factors** that may impact associations



References

- Claus, Benedikt B, Stahlschmidt, Lorin· Dunford, Emma· Major, János· Harbeck-Weber, Cynthia, Bhandari, Rashmi Parekh, Baerveldt, Ardith, Neß, Verena, Grochowska, Kamila, Hübner-Möhler, Bettina, Zernikow, & Boris, Wager, Julia (2022). Intensive interdisciplinary pain treatment for children and adolescents with chronic noncancer pain: A preregistered systematic review and individual patient data meta-analysis. *The Journal of International Association for the Study of Pain*, 163(12):p 2281-2301. doi: 10.1097/j.pain.0000000000002636
- Gorodzinsky, A. Y., Tran, S. T., Medrano, G. R., Fleischman, K. M., Anderson-Khan, K. J., Ladwig, R. J., & Weisman, S. J. (2012). Parents' initial perceptions of multidisciplinary care for pediatric chronic pain. *Pain and Research Treatment*, 2012. doi: 10.1155/2012/791061
- Palermo, T. M., Valrie, C. R., & Karlson, C. W. (2014). Family and parent influences on pediatric chronic pain: A developmental perspective. *American Psychologist*, 69(2), 142–152. doi: 10.1037/a0035216

Resources

- www.childrensmercy.org/RAPS/

Thank you! Questions?